

**LARGE B-CH SERIES ENCLOSURES  
NEMA 12 JIC CONTINUOUS HINGE WALL-MOUNT**



**B202007CH**

**Industry Standards**

UL 50, Types 12 & 13  
CSA Certified, Types 12 & 13  
NEMA/EEMAC Type 12  
JIC EL-1-71

UL File E6924

CSA File LL66078

**FEATURES-SPECIFICATIONS**

**Applications**

Designed to house electrical controls, terminals, instruments and components. Provide protection from dirt, dust, oil and water.

**Construction**

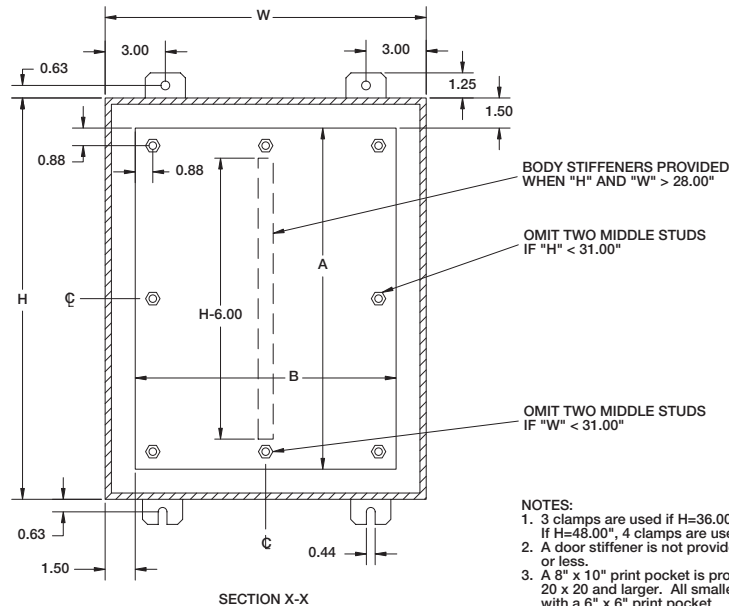
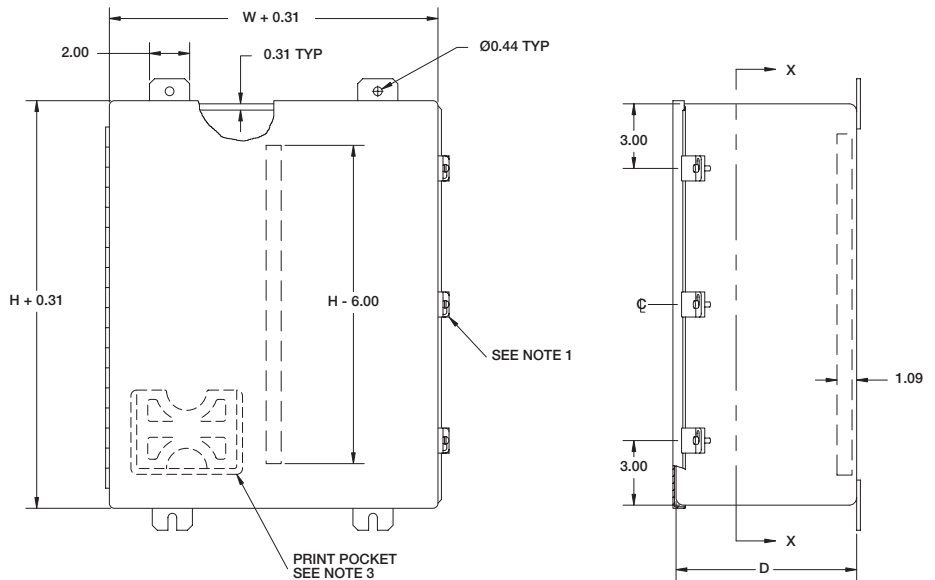
- Bodies and doors fabricated from 14 gauge steel
- Continuously welded seams ground smooth, less knockouts or holes
- Doors are sealed with poured in place polyurethane gasket
- External screw clamps on door
- Continuously hinged door is removable by pulling hinge pin
- Print pocket is provided
- Door and body stiffeners are provided in larger enclosures for added rigidity
- Collar studs are provided for mounting **optional** back panels
- External mounting feet
- Grounding provisions provided

**Finish**

- ANSI-61 gray polyester powder inside and out over phosphatized surfaces
- **Optional** back panels are white polyester powder over phosphatized surfaces

**Accessories**

- Back panels (reference tables)
- See pages J1- J19



**NOTES:**  
1. 3 clamps are used if H=36.00" or 42.00". If H=48.00", 4 clamps are used on 14" centers.  
2. A door stiffener is not provided if H or W is 24.00" or less.  
3. A 6" x 10" print pocket is provided with enclosures 20 x 20 and larger. All smaller enclosures are provided with a 6" x 6" print pocket.

**LARGE B-CH SERIES ENCLOSURES  
NEMA 12 JIC CONTINUOUS HINGE WALL-MOUNT**

**C7**

LARGE B-CH SERIES JIC CONTINUOUS HINGED ENCLOSURES						
CATALOG NUMBER	BODY/DOOR STEEL GAUGE	ENCLOSURE SIZE H X W X D	BACK PANEL CATALOG NUMBER*	BACK PANEL SIZE A X B	STIFFENER	
					DOOR	BODY
B201607CH	14/14	20.00x16.00x7.00 (508x406x178)	NP2016	17.00x13.00 (432x330)	NO	NO
B202007CH	14/14	20.00x20.00x7.00 (508x508x178)	NP2020	17.00x17.00 (432x432)	NO	NO
B242007CH	14/14	24.00x20.00x7.00 (610x508x178)	NP2420	21.00x17.00 (533x432)	NO	NO
B242407CH	14/14	24.00x24.00x7.00 (610x610x178)	NP2424	21.00x21.00 (533x533)	NO	NO
B302007CH	14/14	30.00x20.00x7.00 (762x508x178)	NP3020	27.00x17.00 (686x432)	NO	NO
B362407CH	14/14	36.00x24.00x7.00 (914x610x178)	NP3624	33.00x21.00 (838x533)	NO	NO
B201609CH	14/14	20.00x16.00x9.00 (508x406x229)	NP2016	17.00x13.00 (432x330)	NO	NO
B202009CH	14/14	20.00x20.00x9.00 (508x508x229)	NP2020	17.00x17.00 (432x432)	NO	NO
B242009CH	14/14	24.00x20.00x9.00 (610x508x229)	NP2420	21.00x17.00 (533x432)	NO	NO
B242409CH	14/14	24.00x24.00x9.00 (610x610x229)	NP2424	21.00x21.00 (533x533)	NO	NO
B302009CH	14/14	30.00x20.00x9.00 (762x508x229)	NP3020	27.00x17.00 (686x432)	NO	NO
B302409CH	14/14	30.00x24.00x9.00 (762x610x229)	NP3024	27.00x21.00 (686x533)	NO	NO
B362409CH	14/14	36.00x24.00x9.00 (914x610x229)	NP3624	33.00x21.00 (838x533)	NO	NO
B363009CH	14/14	36.00x30.00x9.00 (914x762x229)	NP3630	33.00x27.00 (838x686)	NO	YES
B423609CH	14/14	42.00x36.00x9.00 (1067x914x229)	NP4236	39.00x33.00 (991x838)	YES	YES
B242411CH	14/14	24.00x24.00x11.00 (610x610x279)	NP2424	21.00x21.00 (533x533)	NO	NO
B362411CH	14/14	36.00x24.00x11.00 (914x610x279)	NP3624	33.00x21.00 (838x533)	NO	NO
B483611CH	14/14	48.00x36.00x11.00 (1219x914x279)	NP4836	45.00x33.00 (1143x838)	YES	YES
B302413CH	14/14	30.00x24.00x13.00 (762x610x330)	NP3024	27.00x21.00 (686x533)	NO	NO
B363013CH	14/14	36.00x30.00x13.00 (914x762x330)	NP3630	33.00x27.00 (838x686)	NO	YES

\* Back panels must be ordered separately.

