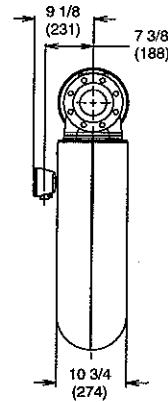
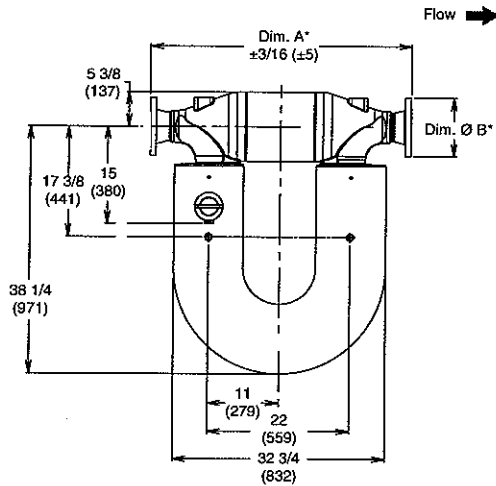


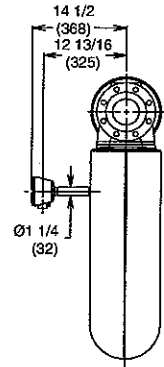
# Dimensions *continued*

Dimensions in *inches*  
(*mm*)

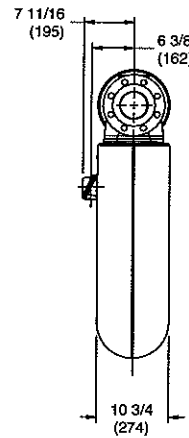
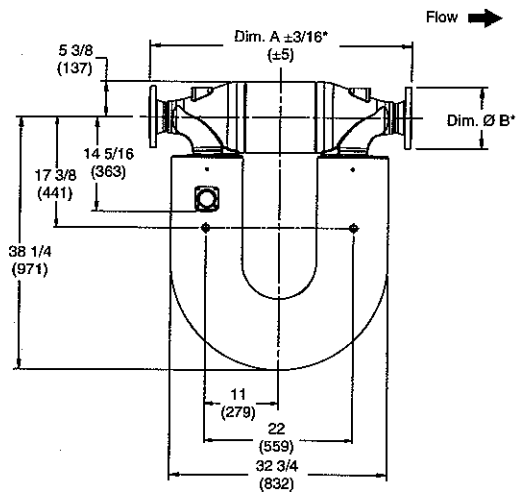
## CMF400 with core processor



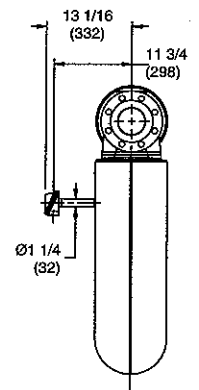
### Temperature extender option



## CMF400 with junction box



### Temperature extender option



\*For dimensions A and B, see page 44.

## Fitting options *continued*

	Fitting code	Dim. A face-to-face inches (mm)	Dim. B outside diameter inches (mm)
<b>CMF400 fitting options<sup>(1)</sup></b>			
4" ANSI 150 lb weld neck raised face flange	435	40 3/16 (1021)	9 (229)
4" ANSI 300 lb weld neck raised face flange	436	41 (1041)	10 (254)
4" ANSI 600 lb weld neck raised face flange	437	42 11/16 (1084)	10 3/4 (273)
6" ANSI 150 lb weld neck raised face flange	451	40 5/16 (1024)	11 (279)
6" ANSI 300 lb weld neck raised face flange	452	41 5/16 (1049)	12 1/2 (318)
6" ANSI 600 lb weld neck raised face flange	453	43 1/2 (1105)	14 (356)
DN100 PN40 weld neck flange; DIN 2635 type C face	460	39 5/16 (999)	9 1/4 (235)
DN100 PN40 weld neck flange; DIN 2635 type N grooved face	462	39 5/16 (999)	9 1/4 (235)
DN100 PN100 weld neck flange; DIN 2637 type E face	464	41 5/16 (1049)	10 7/16 (265)
DN100 PN100 weld neck flange; DIN 2637 type N grooved face	466	41 5/16 (1049)	10 7/16 (265)
DN150 PN40 weld neck flange; DIN 2635 type C face	461	39 5/8 (1006)	11 13/16 (300)
DN150 PN40 weld neck flange; DIN 2635 type N grooved face	463	39 5/8 (1006)	11 13/16 (300)
DN150 PN100 weld neck flange; DIN 2637 type E face	465	41 15/16 (1065)	14 (355)
DN150 PN100 weld neck flange; DIN 2637 type N grooved face	467	41 15/16 (1065)	14 (355)
JIS 100mm 10K weld neck raised face flange	470	39 5/16 (999)	8 1/4 (210)
JIS 100mm 20K weld neck raised face flange	472	39 13/16 (1011)	8 7/8 (225)
JIS 150mm 10K weld neck raised face flange	471	39 5/8 (1006)	11 (280)
JIS 150mm 20K weld neck raised face flange	473	40 1/8 (1018)	12 (305)

(1) Fittings listed here are standard options. Other types of fittings are available. Contact your local Micro Motion representative.