



Electrical Solutions Corporation

2368 Eastman Ave, Suite 13, Ventura, CA 93003

Phone (805) 658-0848 ~ Fax (805) 658-0868

Greetings,

I have been asked to create a control drawing for an existing Vapor Recovery Compressor (VRU). The VRU has been acting strangely, and no existing control drawing could be found.

Problem

During safety device testing, the compressor would sometimes shutdown, even when the safeties had been bypassed specifically for the purpose of testing.

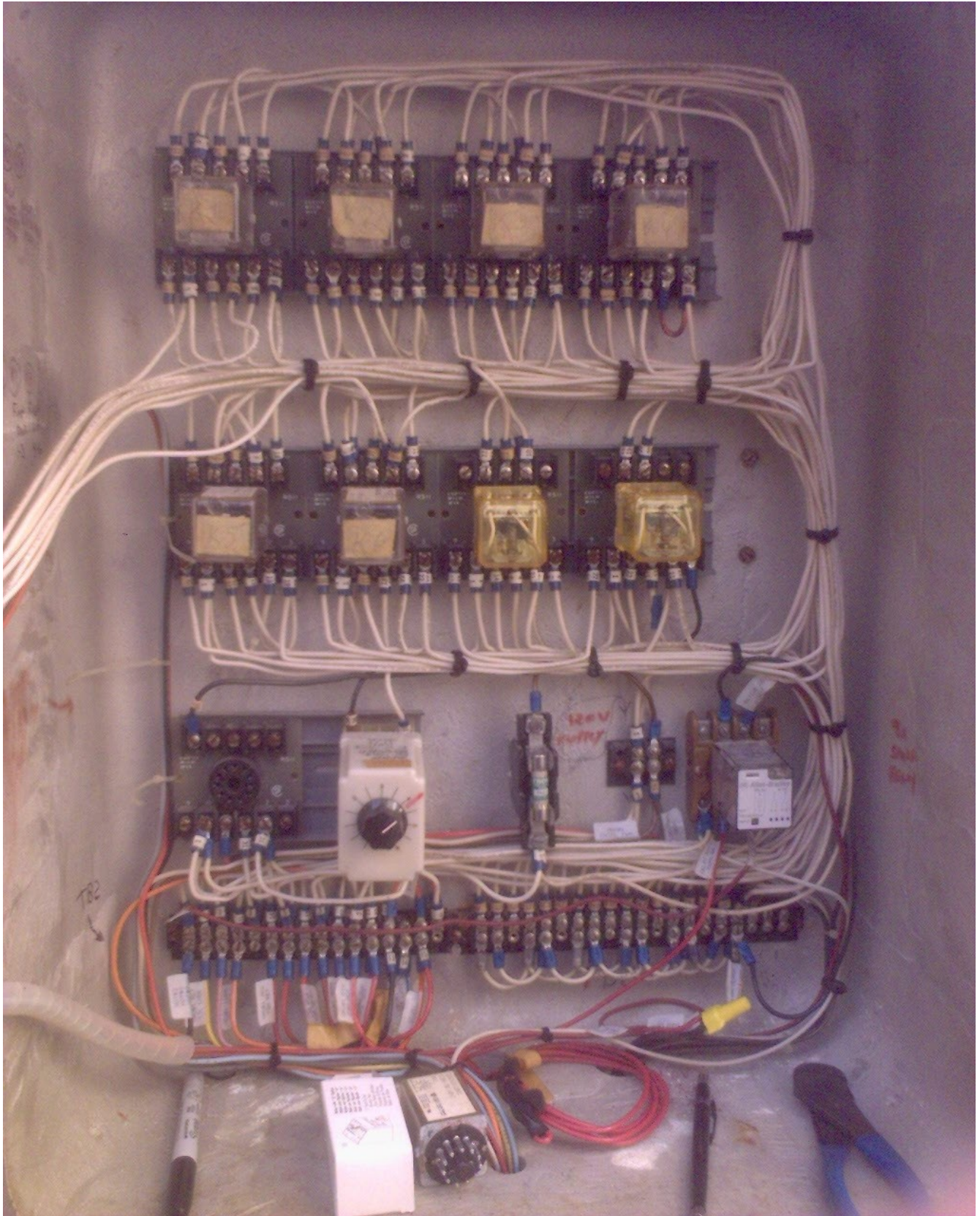
Solution

- Traced out all the wiring on the skid, from device to device, from the control panel back to the MCC, and from the control panel to an emergency generator.
- Sketched a set of control drawings showing the logic of the control circuit.
- Analyzed this control circuit for consistency and found that a set of 6 control wires had been **terminated incorrectly** when the bypass switch was originally installed.
- Re-terminated the control wiring on the correct terminals.
- Modified the control drawing to show the changes I had made, and sent these sketches on to our Designer for final drafting into Autocad.

Below, you will find my field notes prior to sending them to the designer for **final drafting**.

Sincerely,

Rick Hurdle
Electrical Solutions Corporation





Electrical Solutions Corp.

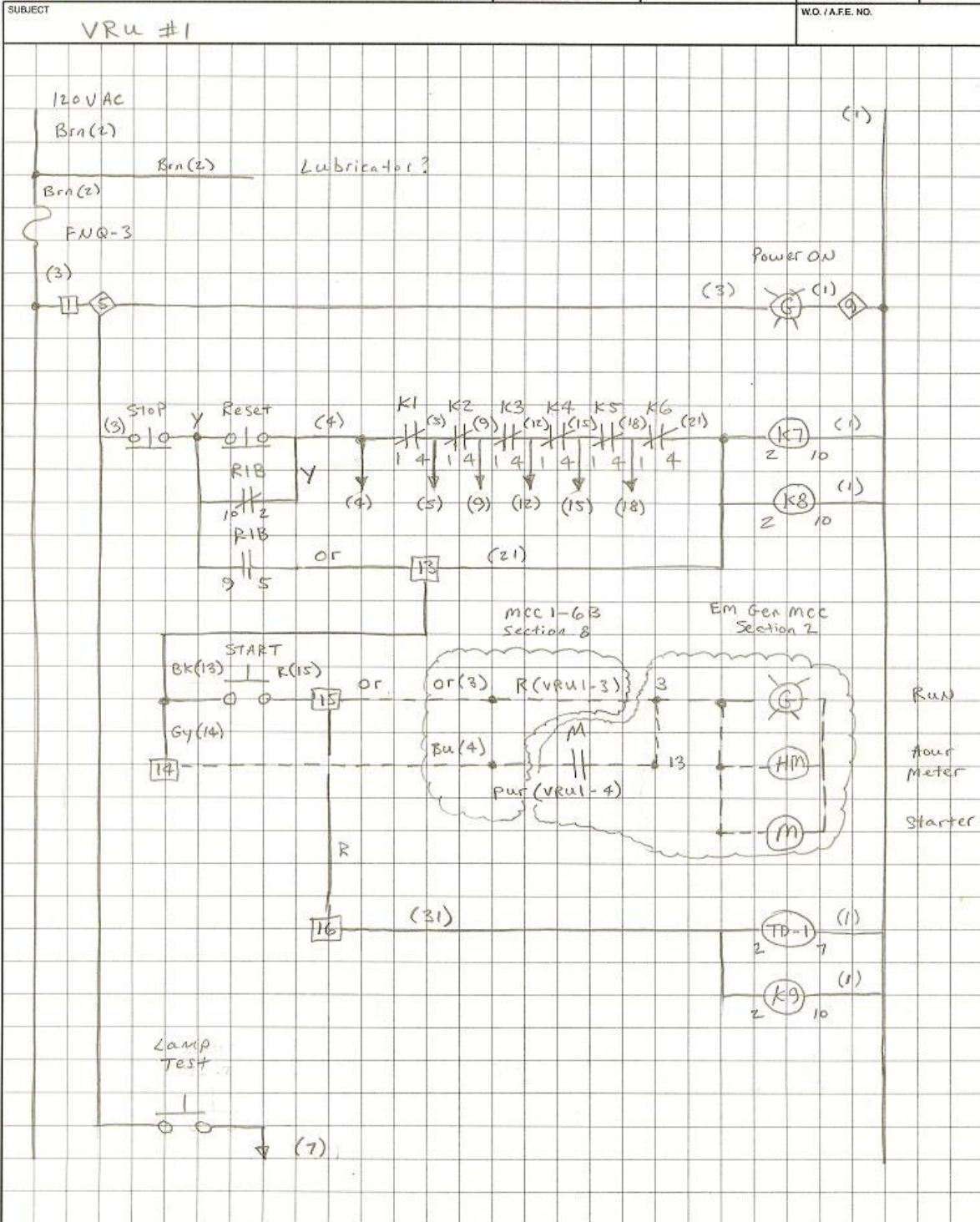
2368 Eastman Ave., Suite 13

Ventura, CA 93003

Phone (805) 658-0848

Fax (805) 658-0868

PREPARED BY R. Hurdle	CHECKED BY	DATE 3/8/07	PAGE 1
--------------------------	------------	----------------	-----------





Electrical Solutions Corp.

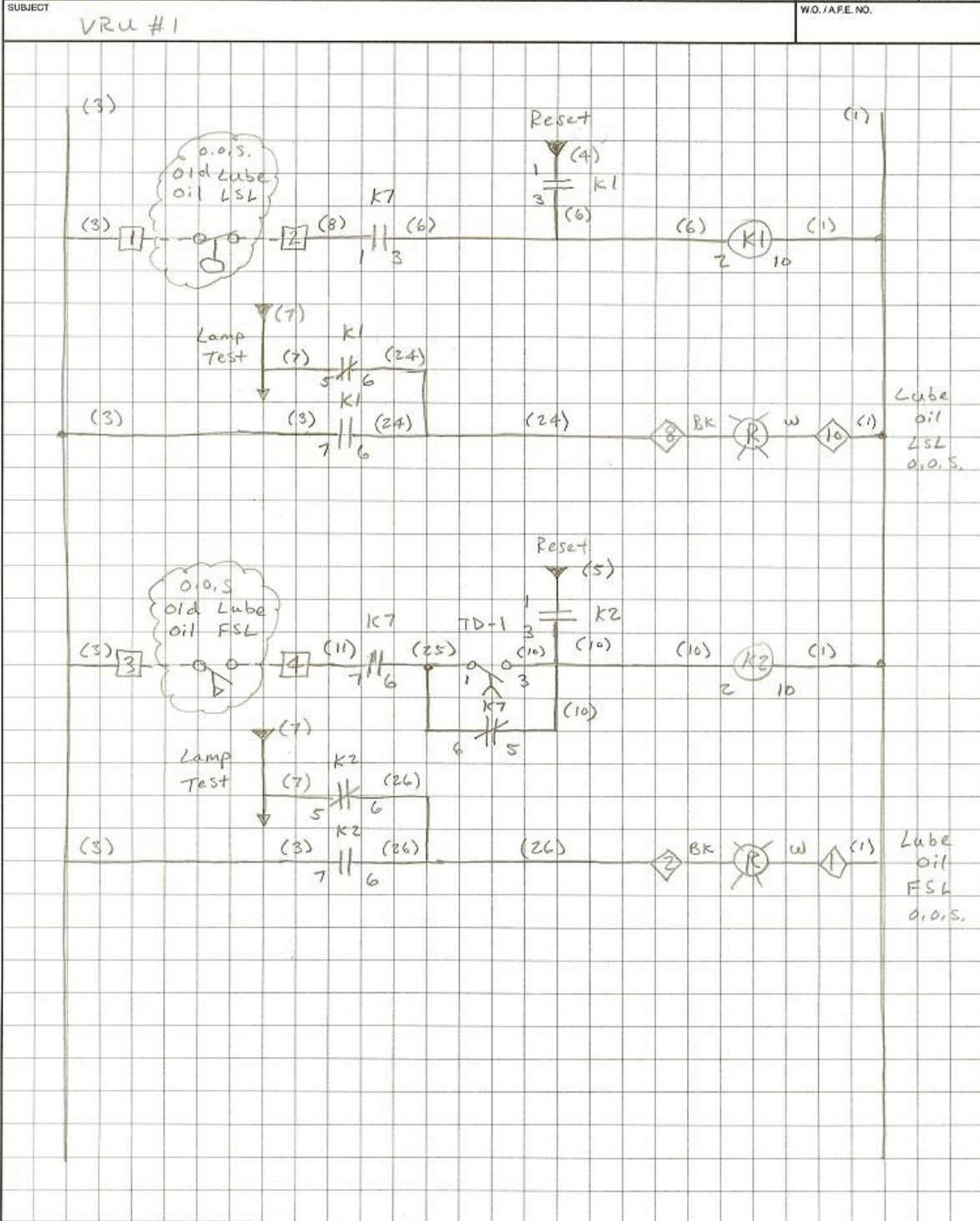
2368 Eastman Ave., Suite 13

Ventura, CA 93003

Phone (805) 658-0848

Fax (805) 658-0868

PREPARED BY R. Hurdle	CHECKED BY	DATE 3/8/07	PAGE 2
--------------------------	------------	----------------	-----------





Electrical Solutions Corp.

2368 Eastman Ave., Suite 13

Ventura, CA 93003

Phone (805) 658-0848

Fax (805) 658-0868

PREPARED BY

R. Hurdle

CHECKED BY

DATE

3/8/07

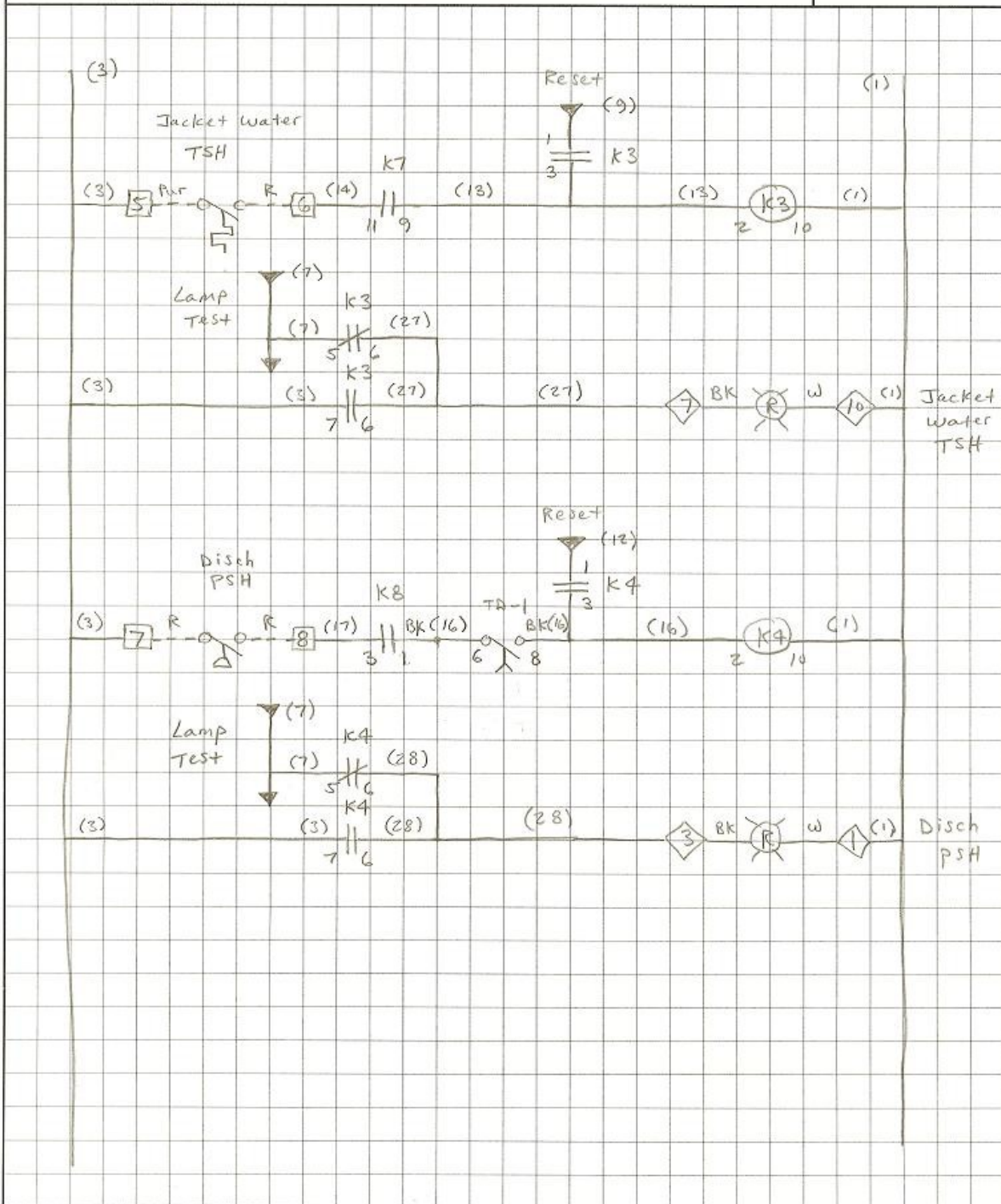
PAGE

3

SUBJECT

VRU #1

W.O. / A.F.E. NO.





Electrical Solutions Corp.

2368 Eastman Ave., Suite 13

Ventura, CA 93003

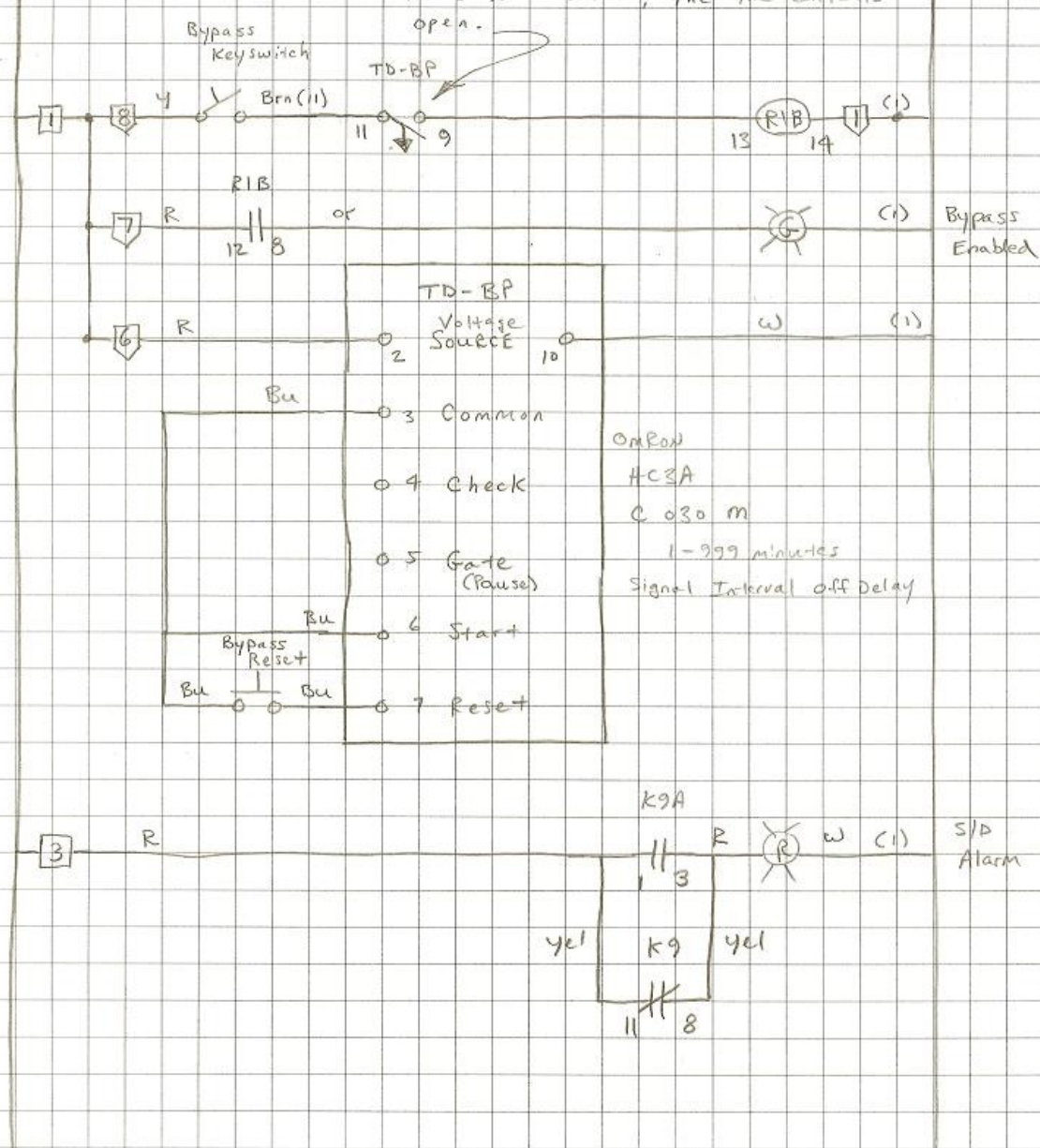
Phone (805) 658-0848

Fax (805) 658-0868

PREPARED BY R. Hurdle	CHECKED BY	DATE	PAGE 5
--------------------------	------------	------	-----------

SUBJECT: VRU #1

Contacts 11-9 close immediately upon START or RESET. The relay times for 30 min, then the contacts open.





Electrical Solutions Corp.

2368 Eastman Ave., Suite 13

Ventura, CA 93003

Phone (805) 658-0848

Fax (805) 658-0868

PREPARED BY

R. Hurdle

CHECKED BY

DATE

3/8/07

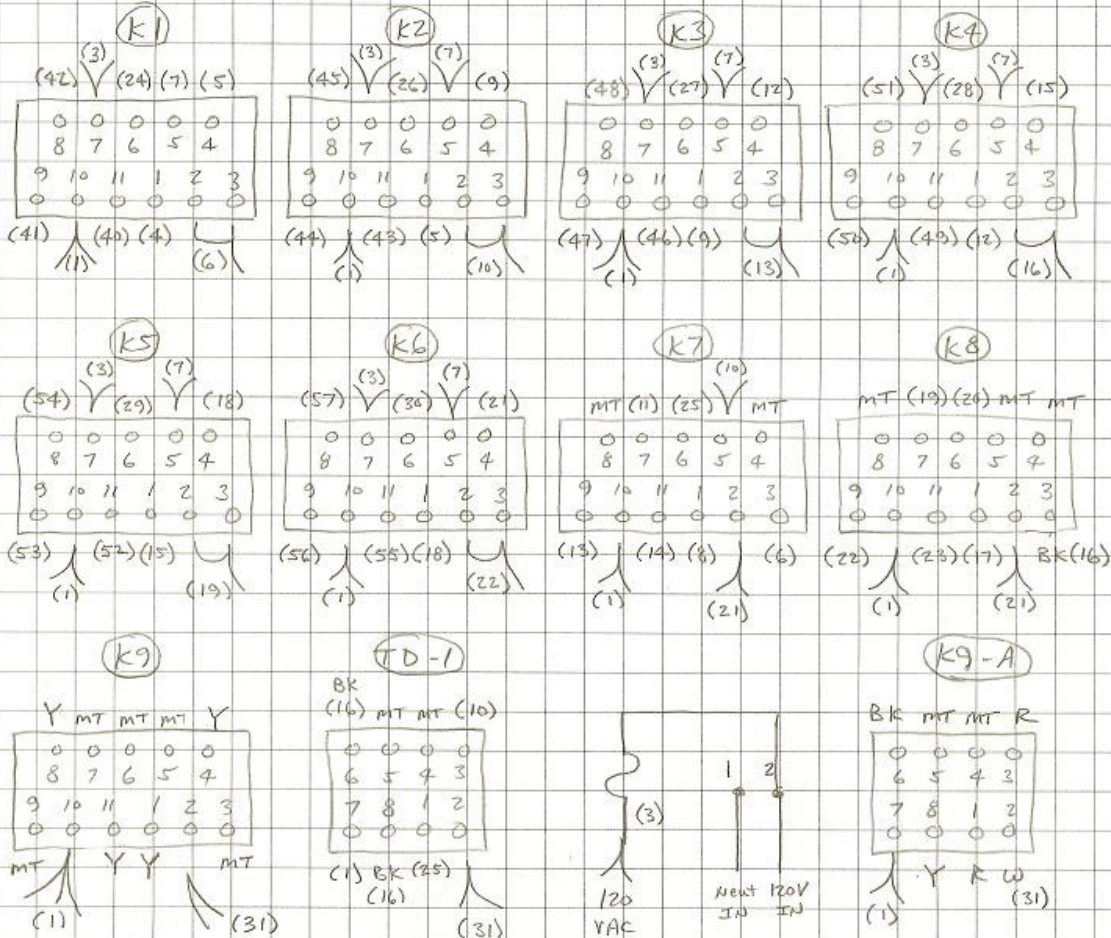
PAGE

1

SUBJECT

Relay Pin-out VRU #1

W.O. / A.F.E. NO.



All wires white unless noted.

Note: ∇ indicates
2 wires landed
on terminal

MT: no wire connected -
empty terminal



Electrical Solutions Corp.

2368 Eastman Ave., Suite 13

Ventura, CA 93003

Phone (805) 658-0848

Fax (805) 658-0868

PREPARED BY

R. Hurdle

CHECKED BY

DATE

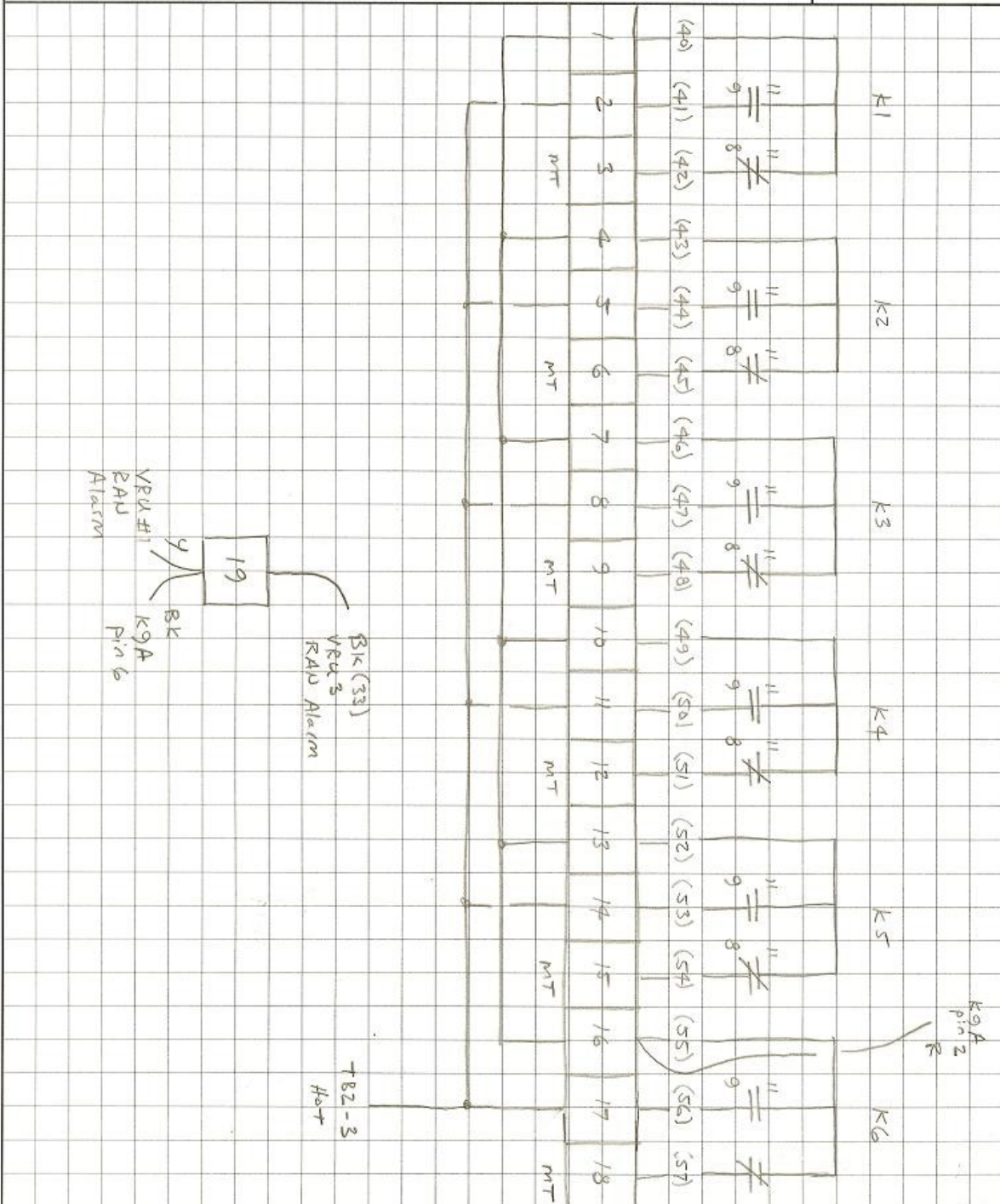
3/8/07

PAGE

SUBJECT

Terminal Strip TB3

W.O. / A.F.E. NO.





Electrical Solutions Corp.

2368 Eastman Ave., Suite 13

Ventura, CA 93003

Phone (805) 658-0848

Fax (805) 658-0868

PREPARED BY R. Hurdle	CHECKED BY	DATE 3/8/07	PAGE
--------------------------	------------	----------------	------

SUBJECT Terminal Strip TB2

