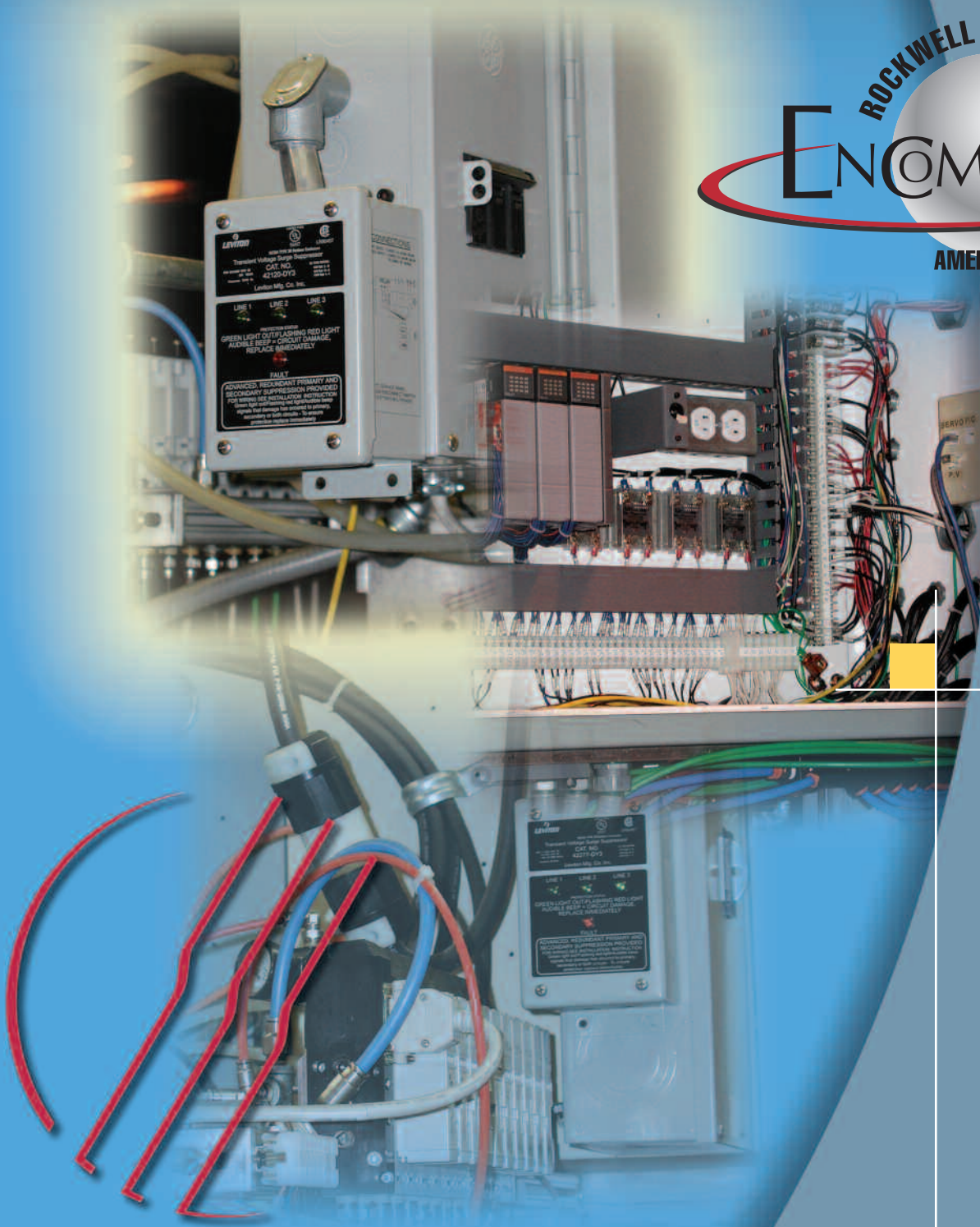


# Leviton Products Referenced in the Rockwell Automation ENCOMPASS™ Program



Power Solutions  
for Industrial  
Automation

# Surge Protection & Power Connection

## Surge Protection

Leviton's network approach to facility-wide surge protection features a comprehensive product line of high-performance surge protective devices. This includes panel-mounted devices for service entrances as well as branch panels, wired-in filters and communication-port protectors to fit all environments and applications.



Panels



32120-DY3  
120/208V AC

42120-DY3  
120/208V AC

### Wired-In Surge Protection 120V and 240V

- Staged multi-component surge suppression circuitry provides clamping envelope that follows AC sine-wave contour
- Primary and secondary suppression circuits are thermal-fuse protected
- Includes diagnostic circuitry with LEDs to indicate surge protection status and acoustic alert if surge protection is lost
- Available in DIN-mount
- Dry contact provided for remote monitoring



51005-DIN  
120V AC 5A



51020-WM  
120V AC 20A



51020-DIN  
120V AC 20A



50120-WMT  
120V AC 20A



# Solutions for Industrial Automation

## Surge Protection Products

These products are designed to provide transient voltage surge suppression for programmable logic controllers, process control equipment and other computer-related data network products. All devices have a 10-Year Limited Warranty.

### 5500 Series Rack-Mount Surge Protectors

- Available in 15 and 20 amp versions
- Offered in switched and non-switched configurations
- 12 ft. cord supplied with straight or locking plug



5500-190  
20A 125V

### PLC and Computer Related-Applications on DH-485 Data Networks

- Protects accessories such as Allen-Bradley PanelView 550 terminals with DH-485 connectivity
- Provides dual grounding options: ground plate for direct connection to the 1771 I/O chassis ground stud, or pig-tail lead for direct connection to the ground bus
- Tested to IEEE C62.36 Standard Test Methods for Surge Protectors used in Low-Voltage, Data and Communication Signaling Circuits



3803-485  
9.6V DC

### 4-20ma Process Control Loop Systems

- Provides low clamping voltages and the ability to withstand high transient current surges
- Provides transient voltage surge protection for process-control equipment 4-20ma signal loops
- Provides dual grounding options: ground plate for direct connection to the 1771 I/O chassis ground stud, or pig-tail lead for direct connection to the ground bus



3420-009  
9.6V DC

3420-035  
38.5V DC



# Industrial Grade Wiring Devices

## Black & White™ Locking Plugs & Connectors

- 15, 20, & 30 Amp Locking
- 125V thru 600V
- 2-P 3-W thru 4-P 5-W
- 40 NEMA Configurations
- 19 Non-NEMA Configurations
- UL/Fed.Spec./CSA/NOM
- Plugs Have Solid Brass Blades
- Connectors Have One-Piece Brass Contacts
- Nylon Construction
- Power Light™ for Power Indication
  - Green Light Glows When Energized



Power Light™

## V-0-MAX™ Receptacles

- 15, 20, & 30 Amp
- 125V thru 600V
- 2-P 3-W thru 4-P 5-W
- 40 NEMA Configurations
- 19 Non-NEMA Configurations
- UL/Fed.Spec./CSA/NOM
- UL V-0 Flammability Rating
- Color-Coded Voltage Ratings
- Nickel Plated Brass Strap



Locking Devices

## Mini Lock™ Midget Plugs, Connecting Receptacles & Outlets

- 15 Amp
- 125V thru 250V
- 3 NEMA Configurations
- 2-P 3-W thru 3-P 3-W



Midget Devices

# Industrial Grade Wiring Devices

## Wetguard® Watertight Plugs, Connectors & Receptacles

- IP66 & 67, Dust-tight & Watertight
- 15, 20, & 30 Amp
- 125V thru 600V
- 2-P 3-W thru 4-P 5-W
- 22 NEMA Configurations
- 4 Non-NEMA Configurations
- UL/Fed.Spec./CSA/NOM
- EPTR Construction
  - Valox® PBT V-0-MAX® Receptacles
- Available in High-Visibility Yellow and Select Black Configurations
- Full Watertight Receptacle: While-in-use cover, CR Receptacle and FD Box



Wetguard® Devices

Valox® is a registered trademark of GE

## DIN-Rail Mountable Receptacles

- Ideal for Mounting in Equipment Cabinets where Convenient Plug-in Protection is Desired
- Surge, GFCI and Non-Surge Duplex Receptacles Available
- Surge Receptacle Includes MOV-Based Normal Mode and Common Mode L-N, L-G, N-G protection
- Designed for Use on 120V Single phase AC Power Sources
- On Surge Receptacles Green LED Goes Off When Surge Protection is Lost
- On Surge Receptacles Audible Alarm has an Integral Disable (quiet) Switch
- GFCI Utilizes Leviton Patented Smartlock™ Technology
- Module Housing Comes in Black Only



3880-DIN  
120V Line Voltage



Back View-DIN Receptacles



8598-DIN  
120V Line Voltage



16252-DIN  
120V Line Voltage



# IEC 309-1 & 309-2 Pin & Sleeve Devices

## Enhanced Pin and Sleeve Devices Offer Greater Durability and Versatility

Leviton has enhanced its line of IEC 309-1 and 309-2 compliant Pin and Sleeve devices to offer increased reliability, durability, versatility and ease of use.

The product line includes North American IP67 Watertight devices in plug, connector, inlet and receptacle configurations; and accessories such as liquid-tight adapters, back boxes and protective closure caps.

North American devices are available in 20, 30, 60, and 100 amp ratings.

Mechanical Interlocks are also available in fused and non-fused configurations.

International-rated devices are available in an IP44 Splashproof version rated for 16, 32 and 63 amps and in an IP67 Watertight version rated for 125 amps.



Pin & Sleeve System

### Plugs, Connectors, Receptacles and Inlets

- Valox® PBT housings for broadest chemical, thermal and UV resistance
- External and internal strain relief
- Sleeves designed to clean pins with each insertion
- Molded-in front and rear terminal identification for faster troubleshooting
- Stainless steel terminal screws on 100 amp devices

### Available Accessories

- Valox® PBT non-metallic back boxes with watertight hub included
- Liquid-tight adapters for liquid-tight conduit
- Keyed lockout/tagout for pin and sleeve Plugs or Inlets

Valox is a registered trademark of GE



# IEC 309-1 & 309-2 Pin & Sleeve Devices



## The Rockwell Automation ENCOMPASS™ Program

This innovative program references complementary products from third-party manufacturers committed to providing quality products and services that enhance the Rockwell Automation solution and solve the industrial automation needs of customers.

## Improved Line of PowerSwitch™ IEC 309 Mechanical Interlock Devices Add Safety, Convenience and Greater Ease of Use

Leviton's Industrial Products Division has enhanced its line of IEC 309-1 and 309-2 PowerSwitch™ Mechanical Interlock devices with features that add greater reliability, durability, and ease of installation. These North American IP67 Watertight devices combine a pin and sleeve receptacle with a safety disconnect switch into a single unit that safeguards end-users and their equipment by preventing the haphazard making/breaking of “under load” electrical connections. The PowerSwitch Mechanical Interlock devices are now available in 20, 30, 60, and 100 amp non-fused configurations and new 20, 30, and 60 amp fused configurations. All configurations are housed in rugged, non-metallic NEMA Type 3R, 4X, and 12K Valox® 357 enclosures.

Enhancements to the line include a new enclosure design that comfortably fits within an I-Beam and a downward facing receptacle angled to protect the receptacle-to-plug connection. The bottom-hinged cover, a Leviton exclusive, provides a handy resting place for tools and reduces cover damage during installation and maintenance. The new high-visibility red “pistol grip” handle includes an integrated lockout feature that meets OSHA's safety regulations while providing visual confirmation of the switch's status.

Internal design enhancements include fused versions in 20, 30, and 60 amps that feature integrated, “finger-safe” fuse holders that accept “Class J” Time-Delay fuses. All models now include a factory-installed auxiliary contact for remote line management and power monitoring, making these devices ideal for automated factory applications in the chemical processing, plastics, packaging, and metal production industries. Space is provided for an additional auxiliary contact, maximizing the device's utility.

### Mechanical Interlocks

- Fused and non-fused devices
- Fused devices feature integrated fuse holders and accept class J fuses
- Factory-installed auxiliary contact included
- Watertight hub included
- Bottom-hinged enclosure for quick and easy servicing
- Red “pistol grip” handle meets OSHA Lockout/Tagout requirements



560MI7W, 420MI9W  
and 420MF9W  
Mechanical Interlocks

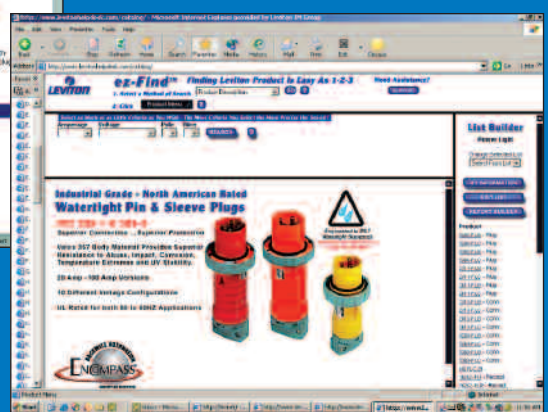
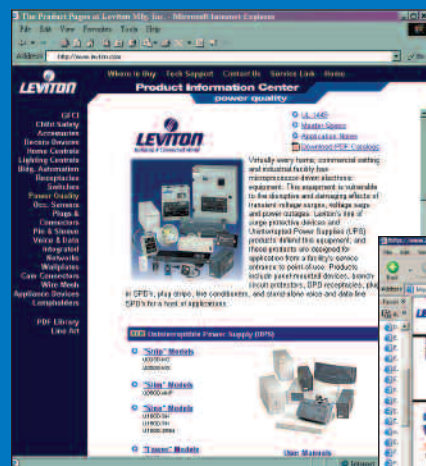


# Visit Us on the Web

## To Find:

- Comprehensive **Product Information** and Complete PDF Literature Library
- Check out **ez-Find™** @ [www.leviton.com](http://www.leviton.com): it's an advanced web based product search tool with powerful enhanced reporting features
- **Tech Support** including: Industry Standards, National Electric Code Updates, FAQ's, NEMA Charts and Wiring Diagrams
- **Marketing Programs**, Application Information and Product Ideas, Trade Show and Exhibit Schedule, On-Line Registration for Seminars and Training
- **Where To Buy** Leviton Products by Zip Code
- A **Service Link** for Authorized Resellers to Check Stock, Place Orders, and Check Order Status
- **Info About Leviton** Including Press Releases and Career Opportunities
- How to **Contact us** with Product Questions, Literature Requests and Comments About Our Website!

## And Much More...



**Leviton Manufacturing Co., Inc.**  
 59-25 Little Neck Parkway, Little Neck, NY 11362-2591 Phone: 1-800-323-8920 • FAX: 1-800-832-9538

Tech Line: (8:00am – 7:30pm E.S.T. Monday – Friday) 1-800-824-3005

In Canada:  
**Leviton Manufacturing of Canada, Ltd.**  
 165 Hymus Boulevard, Pointe Claire, Quebec H9R1G2 Phone: 1-800-469-7890 • FAX: 1-800-563-1853

In Mexico:  
**Leviton S.A. de C.V.**  
 General Arista 54-A Col. Argentina, Mexico D.F., C.P. 11270  
 Phone: 525-386-1131, 525-386-2052 • FAX: 011-525-386-1797

©2005 Leviton Manufacturing Co., Inc. All rights reserved.  
 C-718/J5eg

