



*Transformer Kits
Include Fuses and
Wiring*



*Type MTE, MTG,
MTA and MTC
Transformers*



Type AP Transformers



CE Marked Transformers

Table of Contents

Description	Page
Numbering System	9-2
Control Power Selection Data	9-3
C341 Kits (include fuses and wiring)	9-4
MTA	9-5
MTC	9-7
AP	9-9
Wiring Diagrams for MTA, MTC and AP Transformers	9-10
MTE/MTG	9-11
MTK	9-17
CE Marked Transformers	9-19
Wiring Diagrams for MTE, MTG, MTK and CE Marked Transformers	9-24

**CONTROL POWER
TRANSFORMERS**

**CONTROL POWER
TRANSFORMERS**

Industrial Control Transformers, CE Marked Control Transformers, Kits

Type	Prefix	VA Rating	Code	Transformer Design	Code	Primary Voltage	Secondary Voltage	Code	Modifications	Code
Industrial Control Transformer	C	25	0025	MTA	A	120 x 240	24	1B	Type MTE/MTG/MTK Factory mounted	FB
		50	0050	MTC	C	240 x 480, 230 x 460, 220 x 440	120/115/110	2A		
		75	0075	MTE	E					
CE Marked Control Transformer	CE	100	0100	MTG	G	240 x 480	24	2B	2-pole primary fuse block for rejection type fuses Factory mounted	FBN
		150	0150	MTK	K	240 x 480	120 X 240	2C		
		200	0200	AP	P	230/460	115	2F		
		250	0250			230/460	115/230	2G		
		300	0300			220/380/440/550, 230/400/460/575, 240/416/480/600	23/110, 24/115, 25/120	2U		
		350	0350							
Industrial Control Transformer Kit (Transformer, Fuses, Wiring)	C341	500	0500			208/230/400/460/575	24/115/230	2V	2-pole primary fuse block for non-rejection type fuses Secondary fuse clips for 1/4 x 1-1/4 inch fuses No Secondary fuse clips Ring type terminals connection to fuseblock Electrostatic shield Factory mounted finger-safe terminal shields	Q
		750	0750			208/230/400/460/575	115/230	2W		
		1000	1000			208/277	120	3A		
		1500	1500			115	24	3B		
		2000	2000			230/460/575	115/95	3C		
		3000	3000			208/380/416	115/95	3D		
		5000	5000			500/575/600	110/115/120	4C		
						380/400/415	110 x 220	4D		
						380/400/415	22/23/24	4H		
						550/575/600	22/23/24	4W		
						200/220/440, 208/230/460, 240/480	23/110, 24/115, 25/120	5E		
						240/416/480/600, 230/400/460/575, 220/380/440/550, 208/500	99/120/130, 95/115/125, 91/110/120, 85/100/110	6U		
						240 x 480	120/240	7G (Type AP Only)		
							Type AP Bottom mounted Side/wall mounted Electrostatic shield Copper windings	B S ES CU		
							Type MTA/MTC Factory mounted 3-pole fuse block (2-pole primary rejection type with 1-pole secondary non-rejection type) Electrostatic shield Lead terminations	FB ES L		

NOTE: Contact your local Cutler-Hammer sales office for voltage combinations not shown. Use table for catalog number breakdown only.

Control Transformer Selection Procedure

The following steps will assure that the secondary voltage delivered by your transformer will be either 85%, 90% or 95% of the nameplate secondary voltage under maximum inrush conditions, at rated input voltage. A typical selection example based on these steps follows.

Step 1

Calculate the total SEALED (steady state) VA load of your control circuit. This is done by adding the continuous VA requirements of the maximum number of components that will be energized at any given time, including non-inductive as well as inductive components. For Sealed VA data see **Page 12-6**.

Step 2

Calculate the PEAK INRUSH VA of your control circuit. First, analyze the sequence of operation of all components. Then add together the inrush VA ratings of the components that will be energized simultaneously. Next, determine the peak — or maximum simultaneous — inrush VA load that the transformer will “see.” The VA requirements for indicating lights, timers and other non-inductive components which do not have an inrush VA also should be included since they will present a load to the transformer at the time of maximum inrush.

Step 3

Calculate the TRANSFORMER SELECTION INRUSH VA. Use the following formula:

$$\text{Selection Inrush VA} = \sqrt{(\text{VA Sealed})^2 + (\text{VA Inrush})^2}$$

NOTE: Transformer Selection Inrush VA also can be determined by adding the inrush VA and sealed VA arithmetically, but this usually results in an oversized transformer.

Step 4

Determine the correct transformer NAMEPLATE VA RATING. Refer to the Inrush/Regulation Data table: If the line supply to the transformer is fairly stable (does not vary more than 5%), use the 90% secondary voltage column — the 90% column is most commonly used. If the line supply voltage varies up to 10%, use the 95% voltage regulation column. To determine the correct VA transformer rating, go down the column until you arrive at the inrush VA rating closest to, but not less than, the Transformer Selection Inrush VA calculated in Step 3. The left hand column of the table will give the corresponding transformer NAMEPLATE VA RATING.

Inrush/Regulation Data

Transformer VA Rating 55°C	Inrush VA — 40% Power Factor		
	At 95% Secondary Voltage	At 90% Secondary Voltage	At 85% Secondary Voltage
60	137	185	227
95	242	329	409
105	294	407	512
180	592	842	1071
225	929	1312	1663
275	1271	1801	2288
320	1581	2224	2816
380	2124	3048	3895
550	3196	4604	5896
850	5500	7914	10141
1100	8382	12067	15477
1500	11100	16066	21032
2000	21820	24356	41100
3000	29123	32770	59997
5000	74595	111000	145000
7500	104000	162000	219000
10000	111000	166000	237000

NOTE: When evaluating supply-line stability, remember that supply-line voltage drop frequently is associated with motor-starting inrush current. When motors and motor controls are connected to a common feeder, the controls will experience a momentary voltage dip when the motor starts. This reduces the control transformer voltage supplied to the motor starting contactor and may cause the contactor to chatter or drop out.

Selection Example

Steps 1 and 2

By following Steps 1 and 2 described in column one at left, analysis of the control circuits shows the following sealed VA and inrush VA data:

Qty.	Description	Sealed VA	Inrush VA
3	3-Pole Size 1 Contactors	60	309
2	3-Pole Size 3 Contactors	99	780
4	Relays	88	620
2	Electronic Timers	36	36
4	Indicating Lights	28	28
Totals		311	1773

Step 3

Following Step 3 in column one at left, the Transformer Selection Inrush VA is calculated at 1773 VA.

Transformer Selection VA

$$= \sqrt{(\text{VA Sealed})^2 + (\text{VA Inrush})^2}$$

$$= \sqrt{(311)^2 + (1773)^2}$$

$$= \sqrt{3,240,250}$$

$$= 1800$$

Steps 4 and 5

Following Steps 3 and 4 at left, the Inrush/Regulation Data Chart is then consulted to find the correction nameplate VA size of the transformer. Under the 90% Secondary Voltage column, we find that a 320 VA transformer will deliver 2224 VA, amply covering circuit demands of 1880 Inrush VA. Checking this selection against the requirements of 311 VA sealed, we confirm that a 320 VA transformer will be sufficient.

When Ordering Specify

- Catalog Number

Description

These control transformer kits provide a convenient on-the-job addition of control transformers to the following NEMA 1, 3R, 4/4X and 12 enclosed starters. Adding or changing these kits does not affect the UL listing in most instances.

For Non-combination Starters

These kits may be used for transformer voltage conversion on Freedom NEMA, IEC and Advanced Design NEMA (Advantage) starters furnished from the factory with control transformers installed. Non-combination starters with CPTs factory installed are Class ECN07,

ECA07, ECE07 and ECE11. These kits may also be installed in oversize enclosures that have been designed to accept transformers.

Combination Starters

Most combination starters have space for standard size (and 100 VA extra capacity) control power transformers. The panels are pre-drilled for mounting.

UL/CSA

UL listed — File Number E10156, Guide XPTQ.

The transformer kit consists of:

- Control transformer
- Two primary and one secondary fuse
- Wires
- Mounting instruction publication



Control Transformer Kit

Standard Transformer Sizes ①

NEMA Size	IEC Size	VA Capacity		
		Freedom	Advantage	Vacuum
0	A - F	50	—	—
1, 2	G - K	100	100	—
3	L - N	150	100	—
4	P - R	200	100	100
5	S	200	250	150
6	T - U	250	250	350

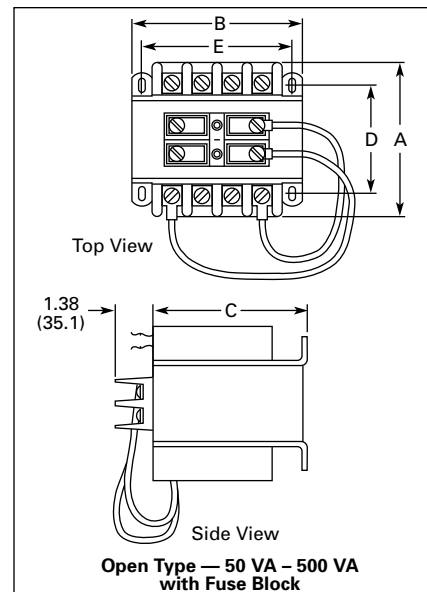
① Non-reversing, single contactor only.

Control Transformer Kits

Continuous VA	Catalog Number					*
	Primary 208/277V Secondary 120V, 60 Hz	Primary 240/480V, 60 Hz 220/440V, 50 Hz Secondary 120V, 60 Hz 110V, 50 Hz	Primary 380V Secondary 110V, 50 Hz	Primary 600V, 60 Hz 550V, 50 Hz Secondary 120V, 60 Hz 110V, 50 Hz	Primary 240/480V Secondary 24V, 60 Hz	
50	C341AE	C341AC	C341AL	C341AD	C341AS	
75	BE	BC	BL	BD	BS	
100	CE	CC	CL	CD	CS	
150	DE	DC	DL	DD	DS	
200	C341EE	C341EC	C341EL	C341ED	C341ES	
250	FE	FC	FL	FD	FS	
300	GE	GC	GL	GD	GS	
350	HE	HC	HL	HD	HS	
500	JE	JC	JL	JD	JS	

Approximate Dimensions and Shipping Weights

Continuous VA	Dimensions in Inches (mm)						Ship Wt. lbs.
	Wide A	High B	Deep C	Mounting			
				D	E	Slots	
50	3.00 (76.2)	3.00 (76.2)	2.56 (65.0)	2.00 (50.8)	2.50 (63.5)	.203 x .375 (5.2 x 9.5)	3.0
75	3.50 (88.9)	3.00 (76.2)	2.56 (65.0)	2.50 (63.5)	2.50 (63.5)	.203 x .375 (5.2 x 9.5)	4.3
100	3.38 (85.9)	3.38 (85.9)	2.88 (73.2)	2.38 (60.5)	2.81 (71.4)	.203 x .375 (5.2 x 9.5)	4.6
150	4.00 (101.6)	3.75 (95.3)	3.18 (80.8)	2.88 (73.2)	3.12 (79.2)	.203 x .375 (5.2 x 9.5)	7.0
200	4.00 (101.6)	4.50 (114.3)	3.81 (96.8)	2.50 (63.5)	3.75 (95.3)	.203 x .375 (5.2 x 9.5)	7.7
250	4.38 (111.3)	4.50 (114.3)	3.81 (96.8)	2.88 (73.2)	3.75 (95.3)	.203 x .375 (5.2 x 9.5)	10.0
300	4.75 (120.7)	4.50 (114.3)	3.81 (96.8)	3.25 (82.6)	3.75 (95.3)	.203 x .375 (5.2 x 9.5)	13.0
350	5.25 (133.4)	4.50 (114.3)	3.81 (96.8)	3.75 (95.3)	3.75 (95.3)	.203 x .375 (5.2 x 9.5)	14.0
500	5.50 (139.7)	5.25 (133.4)	4.75 (120.7)	4.25 (108.0)	4.38 (111.3)	.312 x .688 (7.9 x 17.5)	18.0



*Prices — Consult Sales Office or Price List



Applications

Cutler-Hammer MachineTool and Control Transformers provide stepped-down voltages to machine tool control devices, enabling control circuits to be isolated from all power and lighting circuits.

This allows the use of grounded or ungrounded circuits that are independent of the power or lighting grounds; greater safety is afforded the operator. The control transformer line is particularly adaptable on applications where compact construction is demanded. Electrical performance equals or exceeds ANSI/NEMA standards.

Type MTA Transformers

- UL recognized component and CSA certified for units rated 1000 VA and below.
- 100% tested to verify product quality.
- Electrical performance equals or exceeds requirements of ANSI/NEMA ST-1.
- Regulation exceeds ANSI/NEMA requirements for all ratings.

CONTROL POWER TRANSFORMERS

Type MTA

VA	Dimensions (Inches)			Weight Lbs.	Dimensions (mm)			Weight kg	Frame	Wiring Diagram ①	Catalog Number	*
	H	W	D		H	W	D					

230/460 – 115V, 60 Hz

50											(Use Type MTC – C0050C2A)	
75	3-3/16	3-3/4	3-3/4	3	80	95	95	1.4	1510	1	C0075A2F	
100	3-3/16	3-3/4	4	4	80	95	95	1.8	1512	1	C0100A2F	
150	3-3/16	3-3/4	4-3/4	6	80	95	95	2.7	1520	1	C0150A2F	
200	3-13/16	3-1/2	4-1/2	7	96	114	114	3.2	1714	1	C0200A2F	
250	3-13/16	4-1/2	5	8	96	114	127	3.6	1717	1	C0250A2F	
300	3-13/16	4-1/2	5-1/2	10	96	114	139	4.5	1723	1	C0300A2F	
350	3-13/16	4-1/2	6	12	96	114	152	5.4	1727	1	C0350A2F	
500	4-3/8	5-1/4	5-5/8	15	111	133	143	6.8	1923	1	C0500A2F	
750	4-3/8	5-1/4	6-1/8	19	111	133	155	8.6	1931	1	C0750A2F	
1000	5-1/4	6-1/8	6-3/4	19	133	155	171	8.6	C613	1	C1000A2F	
1500	6	6-7/8	7-1/2	27	152	174	190	12.3	C614	1	C1500A2F	
2000	5-7/8	6-7/8	8-1/2	36	149	174	215	16.3	C827	1	C2000A2F	
3000	6-1/2	8-3/16	8-3/4	52	165	207	222	23.6	C828	1	C3000A2F	
5000	7-5/8	8-15/16	10-1/4	79	193	227	260	35.8	C829	1	C5000A2F	

230/460 – 115/230V, 60 Hz

50	2-19/32	3	3-1/4	2	65	76	82	.9	1310	3	C0050A2G	
75	3-3/16	3-3/4	3-3/4	3	80	95	95	1.4	1510	3	C0075A2G	
100	3-3/16	3-3/4	4	4	80	95	95	1.8	1512	3	C0100A2G	
150	3-3/16	3-3/4	4-3/4	6	80	95	95	2.7	1520	3	C0150A2G	
200	3-13/16	4-1/2	4-1/2	7	96	114	114	3.2	1714	3	C0200A2G	
250	3-13/16	4-1/2	5	8	96	114	127	3.6	1717	3	C0250A2G	
300	3-13/16	4-1/2	6	10	96	114	152	4.5	1727	3	C0300A2G	
350	3-13/16	4-1/2	6	12	96	114	152	5.4	1727	3	C0350A2G	
500	4-3/8	5-1/4	6-1/4	15	111	133	158	6.8	1930	3	C0500A2G	
750	5-1/4	6-1/8	6-3/4	19	133	155	171	8.6	C613	3	C0750A2G	
1000	5-1/4	6-1/8	6-3/4	19	133	155	171	8.6	C613	3	C1000A2G	
1500	6	6-7/8	7-1/2	27	152	174	190	12.3	C614	3	C1500A2G	
2000	5-7/8	6-7/8	8-1/2	36	149	174	215	16.3	C827	3	C2000A2G	
3000	6-1/2	8-3/16	8-3/4	52	165	207	222	23.6	C828	3	C3000A2G	
5000	5-5/8	8-15/16	10-1/4	79	193	227	260	35.8	C829	3	C5000A2G	

① See Page 9-10 for Wiring Diagrams.

NOTE: For additional information, refer to Cutler-Hammer Industrial Control Transformer Binder B1228A.

*Prices — Consult Sales Office or Price List

Type MTA

VA	Dimensions (Inches)			Weight Lbs.	Dimensions (mm)			Weight kg	Frame	Wiring Diagram ①	Catalog Number	*
	H	W	D		H	W	D					
230/460/575 – 115/95V, 50/60 Hz												
50	2-19/32	3	3-3/4	2	98	76	95	1.5	1314	2A	C0050A3C	
75	3-3/16	3-3/4	4	4	80	95	101	1.8	1512	2A	C0075A3C	
100	3-3/16	3-3/4	4-3/4	5	80	95	120	2.7	1517	2A	C0100A3C	
150	3-13/16	4-1/2	4-1/2	7	96	114	114	3.2	1714	2A	C0150A3C	
200	3-13/16	4-1/2	5	8	96	114	127	3.6	1717	2A	C0200A3C	
250	3-13/16	4-1/2	5-1/2	10	96	114	139	4.5	1723	2A	C0250A3C	
300	3-13/16	4-1/2	6	12	96	114	152	5.4	1730	2A	C0300A3C	
350	4-3/8	5-1/4	5-5/8	14	111	133	143	6.8	1923	2A	C0350A3C	
500	4-3/8	5-1/4	6-1/8	17	111	133	155	8.6	1931	2A	C0500A3C	
750	4-3/8	5-1/4	7-3/4	27	111	133	196	12.3	1943	2A	C0750A3C	
1000	6	6-7/8	7-1/2	24	152	174	190	10.9	C614	2A	C1000A3C	
1500	5-7/8	6-7/8	8-1/2	34	149	174	215	15.4	C827	2A	C1500A3C	

115 – 24V, 50/60 Hz

50	2-19/32	3	3-3/4	2	65	76	82	.9	1310	4B	C0050A3B	
100	3-3/16	3-3/4	4-1/8	5	80	95	104	2.3	1513	4B	C0100A3B	
200	3-13/16	4-1/2	4-1/2	7	96	114	114	3.2	1714	4B	C0200A3B	

208/380/416 – 115/95V, 50/60 Hz

50	2-19/32	3	3-3/4	3	98	76	95	1.5	1314	2B	C0050A3D	
100	3-3/16	3-3/4	4-3/4	5	80	95	120	2.3	1516	2B	C0100A3D	
150	3-13/16	4-1/2	4-1/2	7	96	114	114	3.2	1714	2B	C0150A3D	
200	3-13/16	4-1/2	5	8	96	114	127	3.6	1717	2B	C0200A3D	
250	3-13/16	4-1/2	5-1/2	10	96	114	139	4.5	1723	2B	C0250A3D	
300	3-13/16	4-1/2	6	13	96	114	152	5.4	1730	2B	C0300A3D	
500	4-3/8	5-1/4	6-1/8	18	111	133	155	8.6	1931	2B	C0500A3D	
750	4-3/8	5-1/4	7-3/4	27	111	133	196	12.3	1943	2B	C0750A3D	
1000	6	6-7/8	7-1/2	25	152	174	190	10.9	C614	2B	C1000A3D	
1500	5-7/8	6-7/8	8-1/2	33	149	174	215	15.4	C827	2B	C1500A3D	

① See Page 9-10 for Wiring Diagrams.

NOTE: For additional information, refer to Cutler-Hammer Industrial Control Transformer Binder B1228A.

*Prices — Consult Sales Office or Price List



Type MTC

Type MTC Control Transformers are similar to Type MTA except MTC provide increased regulation.

Features

- Designed specifically for loads requiring extremely good regulation — 10% to 200% better regulation than Type MTA.
- UL recognized component and CSA certified for units rated 1000 VA and below.
- Electrical performance exceeds requirements of ANSI/NEMA ST-1.
- 100% tested; each unit must pass rigid tests for turns ratio, insulation, continuity, and over potential.

CONTROL POWER TRANSFORMERS

Type MTC

VA	Dimensions (Inches)			Weight Lbs.	Dimensions (mm)			Weight kg	Frame	Wiring Diagram ①	Catalog Number	*
	H	W	D		H	W	D					

240/480 – 120V, 60 Hz
230/460 – 115V, 50/60 Hz
220/440 – 110V, 50/60 Hz

50	2-19/32	3	3-3/4	2	66	76	95	.9	1310	1	C0050C2A	
75	2-19/32	3	3-3/4	3	66	76	95	1.4	1314	1	C0075C2A	
100	2-7/8	3-3/8	4	3	73	86	102	1.4	1413	1	C0100C2A	
150	3-3/16	3-3/4	4-3/4	6	81	95	121	2.7	1517	1	C0150C2A	
200	3-13/16	4-1/2	4-1/2	7	97	114	114	3.2	1714	1	C0200C2A	
250	3-13/16	4-1/2	5	8	97	114	127	3.6	1717	1	C0250C2A	
300	3-13/16	4-1/2	5-3/8	10	97	114	137	4.5	1722	1	C0300C2A	
350	3-13/16	4-1/2	6	11	97	114	152	5.0	1726	1	C0350C2A	
500	4-3/8	5-1/4	6-1/8	20	111	133	156	9.1	1931	1	C0500C2A	
750	4-3/8	5-1/4	7-3/4	28	111	133	197	12.7	1934	1	C0750C2A	
1000	5-7/16	6-3/8	7-1/2	34	138	162	191	15.4	2236	1	C1000C2A	
1500	6-1/8	6-7/8	8-3/8	35	156	175	213	15.9	C822	1	C1500C2A	
2000	6	6-3/4	8-1/2	38	152	171	216	17.3	C823	1	C2000C2A	
3000	7-3/8	8-7/16	8-3/4	53	187	214	222	24.1	C824	1	C3000C2A	
5000	7-7/8	8-11/16	11	82	200	221	279	37.2	C825	1	C5000C2A	

① See Page 9-10 for Wiring Diagrams.

NOTE: For additional information, refer to Cutler-Hammer Industrial Control Transformer Binder B1228A.

Accessories – Field Installed

Fuse Holders for Types MTA and MTC Control Transformers (Fuses not included)		
Add-a-part fuse holders mount directly on terminal screws of Types MTA and MTC Control Transformers to provide secondary fusing when required without increasing control panel space requirements. Fuse holders are rated 240V AC.		
Transformer Type	VA Rating	Fuseholder Catalog Number
MTA/MTC	50-750	257A574G01

*Prices — Consult Sales Office or Price List



Type MTC

Type MTC Control Transformers are similar to Type MTA except MTC provide increased regulation.

Features

- Designed specifically for loads requiring extremely good regulation — 10% to 200% better regulation than Type MTA.
- UL recognized component and CSA certified for units rated 1000 VA and below.
- Electrical performance exceeds requirements of ANSI/NEMA ST-1.
- 100% tested; each unit must pass rigid tests for turns ratio, insulation, continuity, and over potential.

Type MTC with Integrally Mounted 30A, 600V Class Fuse Block (Fuses Not Included)

VA	Dimensions (Inches)			Weight Lbs.	Dimensions (mm)			Weight kg	Frame	Wiring Diagram ①	Catalog Number	*
	H	W	D		H	W	D					
240/480 – 120V, 60 Hz												
230/460 – 115V, 50/60 Hz												
220/440 – 110V, 50/60 Hz												
50	3-7/8	3	3-3/4	2.2	98	76	83	1.0	1310	1	C0050C2AFB	
75	3-7/8	3	3-3/4	3.2	98	76	95	1.5	1314	1	C0075C2AFB	
100	4-5/32	3-3/8	4	3.2	106	86	102	1.5	1413	1	C0100C2AFB	
150	4-15/32	3-3/4	4-3/4	6.2	114	95	121	2.8	1517	1	C0150C2AFB	
200	5-3/32	4-1/2	4-1/2	7.2	129	114	114	3.3	1714	1	C0200C2AFB	
250	5-3/32	4-1/2	5	8.2	129	114	127	3.7	1717	1	C0250C2AFB	
300	5-3/32	4-1/2	5-3/8	10.2	129	114	137	4.7	1722	1	C0300C2AFB	
350	5-3/32	4-1/2	6	11.2	129	114	152	5.1	1726	1	C0350C2AFB	
500	5-21/32	5-1/4	6-1/8	20.2	144	133	156	9.2	1931	1	C0500C2AFB	
750	5-21/32	5-1/4	7-3/4	28.2	144	133	197	12.8	1934	1	C0750C2AFB	
1000	6-23/32	6-3/8	7-1/2	34.2	171	162	191	15.5	2236	1	C1000C2AFB	
1500	7-13/32	6-7/8	8-3/8	35.2	188	175	213	16.0	C822	1	C1500C2AFB	
2000	7-9/32	6-3/4	8-1/2	38.2	185	171	216	17.4	C823	1	C2000C2AFB	

① See Page 9-10 for Wiring Diagrams.

NOTE: For additional information, refer to Cutler-Hammer Industrial Control Transformer Binder B1228A.

*Prices — Consult Sales Office or Price List



Type AP

Type AP

The Type AP Control Transformers feature an encapsulated core and coil which provides a totally enclosed, non-ventilated construction. Smaller than open core and coil type units, connections are made with the convenient screw type terminal board. For ease of installation, two types of mounting are provided. Select a design with the base plate arranged for bottom mounting or for side/wall mounting.

Features

- UL recognized.
- Resin encapsulated.
- Convenient screw-type terminal board.
- Bottom or side/wall mounting designs.
- Performance meets/exceeds ANSI/NEMA ST-1 requirements.
- Regulation exceeds ANSI/NEMA requirements for all ratings.
- 115°C winding rise.

CONTROL POWER TRANSFORMERS

Type AP

VA	Dimensions (Inches)			Weight Lbs.	Dimensions (mm)			Weight kg	Frame	Wiring Diagram ①	Catalog Number	*
	H	W	D		H	W	D					

240/480 – 120/240V, 60 Hz

3	Bottom	8-5/16	9-9/16	8-13/16	65	227	243	224	29.5	133	C0003P7GB	
5	Bottom	10-3/4	10-3/4	8-11/16	104	273	273	221	47.2	99	C0005P7GB	
7.5	Bottom	10-3/4	10-3/4	10-3/16	129	273	273	259	58.6	100	C0007P7GB	
10	Bottom	10-3/4	10-3/4	11-3/8	148	273	273	289	67.2	101	C0010P7GB	
15	Bottom	12	13-3/16	10-7/16	197	305	335	265	89.4	134	C0015P7GB	
3	Side/Wall	9-3/4	8-13/16	9-9/16	65	248	224	243	29.5	292	C0003P7GS	
5	Side/Wall	11-5/8	8-11/16	10-3/4	104	295	221	273	47.2	256	C0005P7GS	
7.5	Side/Wall	11-5/8	10-13/16	10-3/4	129	295	275	273	58.6	257	C0007P7GS	
10	Side/Wall	11-5/8	11-3/8	10-3/4	148	295	289	273	67.2	258	C0010P7GS	
15	Side/Wall	12-7/8	10-7/16	13-3/16	197	327	265	335	89.4	259	C0015P7GS	

① See Page 9-10 for Wiring Diagrams.

NOTE: For additional information, refer to Cutler-Hammer Industrial Control Transformer Binder B1228A.

*Prices — Consult Sales Office or Price List

MTA, MTC and AP Transformers

CONTROL POWER TRANSFORMERS

Type MTA and MTC Control Transformers

Volts		Connect	Lines
A	B		

Diagram 1

460		H2 to H3	H1-H4
230		H1 to H3 and H2 to H4	H1-H4
115			X1-X2

Diagram 2

575	416	H2 to H3	H1-H5
460	380	H2 to H3	H1-H4
230		H1 to H3 and H2 to H4	H1-H4
	208	H1 to H3 and H2 to H5	H1-H5
115	115		X1-X3
95	95		X1-X2

Diagram 3

460		H2 to H3	H1-H4
230		H1 to H3 and H2 to H4	H1-H4
230		X2 to X3	X1-X4
115		X1 to X3 and X2 to X4	X1-X4

Diagram 4

115	115		H1-H2
12	24		X1-X2

Type AP Control Transformers

Volts		Connect	Lines
-------	--	---------	-------

Diagram 5

480		H1 to H3	H1-H4
240		H1 to H3	H1-H4
240		X2 to X3	X1-X4
115		X1 to X3 and X2 to X4	X1-X4

Diagram 1

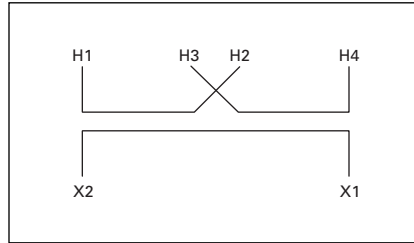


Diagram 4

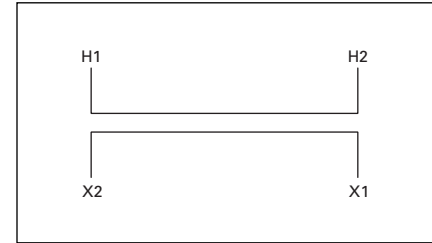


Diagram 2

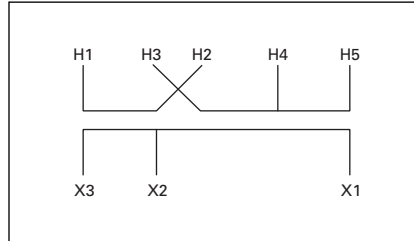


Diagram 5

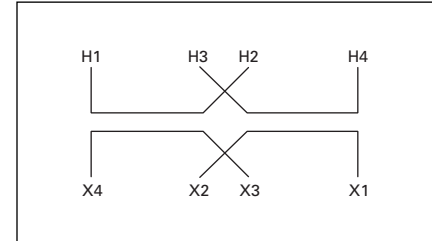
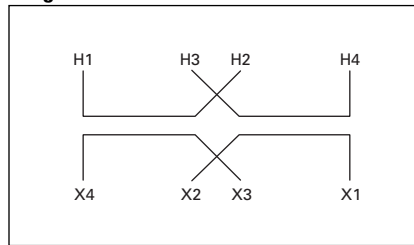


Diagram 3



Features

- Epoxy encapsulated coils.
- UL Listed, CSA Certified.
- Provides step-down voltages to machine tool control devices.
- Isolates control circuits from power and lighting circuits.
- Laminations of high quality silicon steel to minimize core losses and optimize performance.
- Copper magnet wire for high quality, efficient operation.
- Secondary fuse clips where applicable.
- Optional primary fusing.
- Molded-in terminals.
- 55°C rise, Class 105 insulation system.
- 50/60 Hz.

Type MTE

VA	Dimensions (Inches)			Weight Lbs.	Dimensions (mm)			Weight kg	Wiring Diagram ①	Catalog Number	*
	H	W	D		H	W	D				

Primary: 240 x 480, 230 x 460, 220 x 440 with Jumpers
Secondary: 120/115/110 with Fuse Clips for 13/32 x 1-1/2 Fuses

25	2-9/16	3	2-1/2	1.7	65	76	64	.8	1	C0025E2A	
50	2-9/16	3	3	2.6	65	76	76	1.2	1	C0050E2A	
75	2-9/16	3	3-1/2	3.5	65	76	89	1.6	1	C0075E2A	
100	2-7/8	3-3/8	3-3/8	4.2	73	86	86	1.9	1	C0100E2A	
150	3-3/16	3-3/4	4	6.7	81	95	102	3.0	1	C0150E2A	
200	3-13/16	4-1/2	4	8.5	97	114	102	3.9	1	C0200E2A	
250	3-13/16	4-1/2	4-3/8	10.0	97	114	111	4.5	1	C0250E2A	
300	3-13/16	4-1/2	4-3/4	11.3	97	114	121	5.1	1	C0300E2A	
350	3-13/16	4-1/2	5-1/4	13.6	97	114	133	6.2	1	C0350E2A	
500	4-3/4	5-1/4	5-1/2	19.2	121	133	140	8.7	1	C0500E2A	
750	4-3/4	5-1/4	7	28.1	121	133	178	12.8	1	C0750E2A	
1000	5-11/16	6-3/4	6-7/16	29.5	144	171	164	13.4	1	C1000E2A	
1500	6-3/8	7-1/2	7-3/8	40.0	162	191	187	18.1	1	C1500E2A	

Primary: 240 x 480 with Jumpers
Secondary: 24 with Fuse Clips for 13/32 x 1 1/2 Fuses (through 500 VA)

50	2-9/16	3	3	2.7	65	76	76	1.2	2	C0050E2B	
75	2-9/16	3	3-1/2	3.5	65	76	89	1.6	2	C0075E2B	
100	2-7/8	3-3/8	3-3/8	4.2	73	86	86	1.9	2	C0100E2B	
150	3-3/16	3-3/4	4	6.7	81	95	102	3.0	2	C0150E2B	
200	3-13/16	4-1/2	4	8.5	97	114	102	3.9	2	C0200E2B	
250	3-13/16	4-1/2	4-3/8	10.1	97	114	111	4.6	2	C0250E2B	
300	3-13/16	4-1/2	4-3/4	11.4	97	114	121	5.2	2	C0300E2B	
350	3-13/16	4-1/2	5-1/4	13.4	97	114	133	6.1	2	C0350E2B	
500	4-3/4	5-1/4	5-5/8	17.5	121	133	143	7.9	2	C0500E2B	
750	4-3/4	5-1/4	7	28.1	121	133	178	12.8	2	C0750E2B	

Primary: 120 x 240 with Jumpers
Secondary: 24 with Fuse Clips for 13/32 x 1-1/2 Fuses

50	2-9/16	3	3	2.6	65	76	76	1.2	3	C0050E1B	
75	2-9/16	3	3-1/2	3.6	65	76	89	1.6	3	C0075E1B	
100	2-7/8	3-3/8	3-3/8	4.4	73	86	86	2.0	3	C0100E1B	
150	3-3/16	3-3/4	4	6.7	81	95	102	3.0	3	C0150E1B	
200	3-13/16	4-1/2	4	8.3	97	114	102	3.8	3	C0200E1B	
250	3-13/16	4-1/2	4-3/8	10.1	97	114	111	4.6	3	C0250E1B	
300	3-13/16	4-1/2	4-3/4	11.2	97	114	121	5.1	3	C0300E1B	
350	3-13/16	4-1/2	5-1/4	13.2	97	114	133	6.0	3	C0350E1B	
500	4-3/4	5-1/4	5-5/8	17.5	121	133	143	7.9	3	C0500E1B	

Primary: 208/277
Secondary: 120 with Fuse Clips for 13/32 x 1-1/2 Fuses

50	2-9/16	3	3	2.9	65	76	76	1.3	4	C0050E3A	
75	2-9/16	3	3-1/2	3.8	65	76	89	1.7	4	C0075E3A	
100	2-7/8	3-3/8	3-3/8	4.5	73	86	86	2.0	4	C0100E3A	
150	3-3/16	3-3/4	4	6.9	81	95	102	3.1	4	C0150E3A	
200	3-13/16	4-1/2	4	8.7	97	114	102	3.9	4	C0200E3A	
250	3-13/16	4-1/2	4-3/8	10.2	97	114	111	4.6	4	C0250E3A	
300	3-13/16	4-1/2	4-3/4	11.4	97	114	121	5.2	4	C0300E3A	
350	3-13/16	4-1/2	5-1/4	13.7	97	114	133	6.2	4	C0350E3A	
500	4-3/4	5-1/4	5-3/8	17.2	121	133	136	7.8	4	C0500E3A	
750	4-3/4	5-1/4	7	25.7	121	133	178	11.7	4	C0750E3A	

① See Page 9-24 for Wiring Diagrams.

NOTE: For additional information, refer to Cutler-Hammer Industrial Control Transformer Binder B1228A.

*Prices — Consult Sales Office or Price List

**CONTROL POWER
TRANSFORMERS**

Type MTE

VA	Dimensions (Inches)			Weight Lbs.	Dimensions (mm)			Weight kg	Wiring Diagram ①	Catalog Number	*
	H	W	D		H	W	D				

Primary: 240 x 480 with Jumpers

Secondary: 120 x 240 with Jumpers, Fuse Clips Not Applicable

50	2-9/16	3	3	2.6	65	76	76	1.2	11	C0050E2CXX	
75	2-9/16	3	3-1/2	3.5	65	76	89	1.6	11	C0075E2CXX	
100	2-7/8	3-3/8	3-3/8	4.2	73	86	86	1.9	11	C0100E2CXX	
150	3-3/16	3-3/4	4	6.7	81	95	102	3.1	11	C0150E2CXX	
200	3-13/16	4-1/2	4	8.5	97	114	102	3.9	11	C0200E2CXX	
250	3-13/16	4-1/2	4-3/8	10.0	97	114	111	4.6	11	C0250E2CXX	
300	3-13/16	4-1/2	4-7/8	11.8	97	114	124	5.4	11	C0300E2CXX	
350	3-13/16	4-1/2	5-1/4	13.6	97	114	133	6.2	11	C0350E2CXX	
500	4-3/4	5-1/4	5-1/4	17.5	121	133	133	8.0	11	C0500E2CXX	
750	4-3/4	5-1/4	7	26.4	121	133	178	12.0	11	C0750E2CXX	

Primary: 550/575/600

Secondary: 110/115/120 with Fuse Clips for 13/32 x 1-1/2 Fuses

50	2-9/16	3	3	2.7	65	76	76	1.2	10	C0050E4C	
75	2-9/16	3	3-1/2	3.6	65	76	89	1.6	10	C0075E4C	
100	2-7/8	3-3/8	3-3/8	4.2	73	86	86	1.9	10	C0100E4C	
150	3-3/16	3-3/4	4	6.8	81	95	102	3.1	10	C0150E4C	
200	3-13/16	4-1/2	4	8.4	97	114	102	3.8	10	C0200E4C	
250	3-13/16	4-1/2	4-3/8	10.0	97	114	111	4.6	10	C0250E4C	
300	3-13/16	4-1/2	4-3/4	11.3	97	114	121	5.1	10	C0300E4C	
350	3-13/16	4-1/2	5-1/4	13.6	97	114	133	6.2	10	C0350E4C	
500	4-3/4	5-1/4	5-3/8	16.8	121	133	137	7.6	10	C0500E4C	
750	4-3/4	5-1/4	7	25.7	121	133	178	11.7	10	C0750E4C	

Primary: 380/400/415

Secondary: 22/23/24 with Fuse Clips for 13/32 x 1-1/2 Fuses

50	2-9/16	3	3	2.5	65	76	76	1.1	13	C0050E4H	
75	2-9/16	3	3-1/2	3.5	65	76	89	1.6	13	C0075E4H	
100	2-7/8	3-3/8	3-3/8	4.0	73	86	86	1.8	13	C0100E4H	
150	3-3/16	3-3/4	4	6.5	81	95	102	3.0	13	C0150E4H	
200	3-13/16	4-1/2	4	8.2	97	114	102	3.7	13	C0200E4H	
250	3-13/16	4-1/2	4-3/8	10.0	97	114	111	4.5	13	C0250E4H	
300	3-13/16	4-1/2	4-3/4	11.0	97	114	121	5.0	13	C0300E4H	
350	3-13/16	4-1/2	5-1/4	13.6	97	114	133	6.2	13	C0350E4H	
500	4-3/4	5-1/4	5-1/2	17.7	121	133	140	8.0	13	C0500E4H	

Primary: 550/575/600

Secondary: 22/23/24 with Fuse Clips for 13/32 x 1-1/2 Fuses

50	2-9/16	3	3	2.5	65	76	76	1.1	12	C0050E4W	
75	2-9/16	3	3-1/2	3.5	65	76	89	1.6	12	C0075E4W	
100	2-7/8	3-3/8	3-3/8	4.0	73	86	86	1.8	12	C0100E4W	
150	3-3/16	3-3/4	4	6.5	81	95	102	3.0	12	C0150E4W	
200	3-13/16	4-1/2	4	8.2	97	114	102	3.7	12	C0200E4W	
250	3-13/16	4-1/2	4-3/8	10.0	97	114	111	4.5	12	C0250E4W	
300	3-13/16	4-1/2	4-3/4	11.0	97	114	121	5.0	12	C0300E4W	
350	3-13/16	4-1/2	5-1/4	13.6	97	114	133	6.2	12	C0350E4W	
500	4-3/4	5-1/4	5-1/2	17.7	121	133	140	8.0	12	C0500E4W	
750	4-1/2	5-1/4	7-3/8	28.0	114	133	187	12.7	12	C0750E4WXXX	

① See Pages 9-24 and 9-25 for Wiring Diagrams.

NOTE: For additional information, refer to Cutler-Hammer Industrial Control Transformer Binder B1228A.

*Prices — Consult Sales Office or Price List

Type MTE

VA	Dimensions (Inches)			Weight Lbs.	Dimensions (mm)			Weight kg	Wiring Diagram ①	Catalog Number	*
	H	W	D		H	W	D				

Primary: 230/460/575
Secondary: 115/95 with Fuse Clips for 13/32 x 1-1/2 Fuses

50	2-9/16	3	3	3.5	65	76	76	1.6	5	C0050E3C	
75	2-7/8	3-3/8	3-3/8	4.5	73	86	86	2.0	5	C0075E3C	
100	2-7/8	3-3/8	3-7/8	6.0	73	86	98	2.7	5	C0100E3C	
150	3-3/16	3-3/4	4-1/4	7.7	81	95	108	3.5	5	C0150E3C	
200	3-13/16	4-1/2	4-1/4	9.0	97	114	108	4.1	5	C0200E3C	
250	3-13/16	4-1/2	4-3/4	9.7	97	114	121	4.4	5	C0250E3C	
300	3-13/16	4-1/2	5-1/8	11.7	97	114	130	5.3	5	C0300E3C	
350	4-3/4	5-1/4	5	16.5	121	133	127	7.5	5	C0350E3C	
500	4-3/4	5-1/4	5-5/8	21.5	121	133	143	9.8	5	C0500E3C	
750	4-3/4	5-1/4	7	28.0	121	133	178	12.7	5	C0750E3C	

Primary: 380/400/415
Secondary: 110 x 220 with Jumpers; Fuse Clips Not Applicable

50	2-9/16	3	3	3.0	65	76	76	1.4	6	C0050E4D	
75	2-9/16	3	3-1/2	4.0	65	76	89	1.8	6	C0075E4D	
100	2-7/8	3-3/8	3-9/16	5.2	73	86	90	2.4	6	C0100E4D	
150	3-3/16	3-3/4	4	7.0	81	95	102	3.2	6	C0150E4D	
200	3-13/16	4-1/2	4	8.7	97	114	102	3.9	6	C0200E4D	
250	3-13/16	4-1/2	4-3/8	10.2	97	114	111	4.6	6	C0250E4D	
300	3-13/16	4-1/2	4-3/4	11.0	97	114	121	5.0	6	C0300E4D	
350	3-13/16	4-1/2	5-1/4	13.0	97	114	133	5.9	6	C0350E4D	
500	4-3/4	5-1/4	5-3/8	20.0	121	133	136	9.1	6	C0500E4D	
750	4-3/4	5-1/4	7	28.0	121	133	178	12.7	6	C0750E4D	

Primary: 200/220/440, 208/230/460, 240/480
Secondary: 23/110, 24/115, 25/120 with Fuse Clips for 13/32 x 1-1/2 Fuses

50	2-9/16	3	3-1/4	3.4	65	76	83	1.5	7	C0050E5E	
75	2-7/8	3-3/8	3-1/2	4.8	73	86	89	2.2	7	C0075E5E	
100	3-3/16	3-3/4	5-5/8	5.9	81	95	143	2.7	7	C0100E5E	
150	3-3/16	3-3/4	4-3/8	7.9	81	95	111	3.6	7	C0150E5E	
200	3-13/16	4-1/2	4-1/2	10.6	97	114	114	4.8	7	C0200E5E	
250	3-13/16	4-1/2	5-1/4	13.9	97	114	133	6.3	7	C0250E5E	
300	4-3/4	5-1/4	5-1/8	15.5	121	133	130	7.0	7	C0300E5E	
350	4-3/4	5-1/4	5-3/8	16.8	121	133	136	7.6	7	C0350E5E	
500	4-3/4	5-1/4	6-7/8	23.4	121	133	175	10.6	7	C0500E5E	

Universal Design (MTG Open Core-Coil, MTE Epoxy Encapsulated)
Primary: 240/416/480/600, 230/400/460/575, 220/380/440/550, 208/500
Secondary: 99/120/130, 95/115/125, 91/110/120, 85/100/110 with Fuse Clips for 13/32 x 1-1/2 Fuses

50	2-7/8	3-3/8	4	4.0	73	86	102	1.8	8	C0050G6U ②	
100	3-3/16	3-3/4	4-5/8	6.6	81	95	117	3.0	8	C0100G6U ②	
150	3-13/16	4-1/2	4-7/16	8.8	97	114	113	4.0	8	C0150G6U ②	
250	3-13/16	4-1/2	5-7/8	14.7	97	114	149	6.7	8	C0250G6U ③	
350	4-7/16	5-1/4	5-5/8	18.6	113	133	143	8.4	8	C0350G6U ③	
500	4-7/16	5-1/4	7	25.6	113	133	178	11.6	8	C0500G6U ③	
750	5-3/4	6-3/4	5-11/16	30.5	146	171	144	13.8	8	C0750G6U ③	

① See Page 9-24 for Wiring Diagrams.

② Type MTG Open Core-Coil Universal Design.

③ Type MTE Epoxy Encapsulated Universal Design.

NOTE: For additional information, refer to Cutler-Hammer Industrial Control Transformer Binder B1228A.

Primary Fuse Kit

The primary fuse kit includes a 2-pole Class CC fuse block, instructions, and all associated mounting and wiring hardware. Fuses are not included. When installed, the primary fuse kit will add a maximum of 11/16 inch to the transformer depth and 1-15/16 inches to the transformer height.



Catalog Number	*
PFK1	

*Prices — Consult Sales Office or Price List

Features

- Epoxy encapsulated coils.
- UL Listed, CSA Certified.
- Provides step-down voltages to machine tool control devices.
- Isolates control circuits from power and lighting circuits.
- Laminations of high quality silicon steel to minimize core losses and optimize performance.
- Copper magnet wire for high quality, efficient operation.
- Secondary fuse clips where applicable.
- Optional primary fusing.
- Molded-in terminals.
- 55°C rise, Class 105 insulation system.
- Factory mounted dual primary Class CC fusing capability.
- 50/60 Hz.

Transformers with Primary Fuse Blocks

VA	Dimensions (Inches)			Weight Lbs.	Dimensions (mm)			Weight kg	Wiring Diagram ①	Catalog Number	*
	H	W	D		H	W	D				

Primary: 240 x 480, 230 x 460, 220 x 440 with Jumpers
Secondary: 120/115/110 with Fuse Clips for 13/32 x 1-1/2 Fuses

50	3-15/16	3	3	2.8	100	76	76	1.3	1	C0050E2AFB	
75	3-15/16	3	3-1/2	3.7	100	76	89	1.7	1	C0075E2AFB	
100	4-1/4	3-3/8	3-3/8	4.4	108	86	86	2.0	1	C0100E2AFB	
150	4-9/16	3-3/4	4	6.9	116	95	102	3.1	1	C0150E2AFB	
200	5-3/16	4-1/2	4	8.7	132	114	102	3.9	1	C0200E2AFB	
250	5-3/16	4-1/2	4-3/8	10.2	132	114	111	4.6	1	C0250E2AFB	
300	5-3/16	4-1/2	4-3/4	11.5	132	114	121	5.2	1	C0300E2AFB	
350	5-3/16	4-1/2	5-1/4	13.8	132	114	133	6.3	1	C0350E2AFB	
500	6-1/8	5-1/4	5-1/2	19.4	156	133	140	8.8	1	C0500E2AFB	
750	6-1/8	5-1/4	7	28.3	156	133	178	12.8	1	C0750E2AFB	
1000	7-1/16	6-3/4	6-7/16	29.7	179	171	164	13.4	1	C1000E2AFB	
1500	7-3/4	7-1/2	7-3/8	40.2	197	191	187	18.1	1	C1500E2AFB	

Primary: 240 x 480 with Jumpers and Dual Primary Fuse Block
Secondary: 24 with Fuse Clips for 13/32 x 1-1/2 Fuses

50	3-15/16	3	3	2.8	100	76	76	1.3	2	C0050E2BFB	
75	3-15/16	3	3-1/2	3.8	100	76	89	1.7	2	C0075E2BFB	
100	4-1/4	3-3/8	3-3/8	4.4	108	86	86	2.1	2	C0100E2BFB	
150	4-9/16	3-3/4	4	6.9	116	95	102	3.1	2	C0150E2BFB	
200	5-3/16	4-1/2	4	8.7	132	114	102	3.9	2	C0200E2BFB	
250	5-3/16	4-1/2	4-3/8	10.3	132	114	111	4.7	2	C0250E2BFB	
300	5-3/16	4-1/2	4-3/4	11.6	132	114	121	5.3	2	C0300E2BFB	
350	5-3/16	4-1/2	5-1/4	13.6	132	114	133	6.2	2	C0350E2BFB	
500	6-1/8	5-1/4	5-5/8	17.7	156	133	143	8.0	2	C0500E2BFB	

Primary: 120 x 240 with Jumpers and Dual Primary Fuse Block
Secondary: 24 with Fuse Clips for 13/32 x 1-1/2 Fuses

50	3-15/16	3	3	2.8	100	76	76	1.3	3	C0050E1BFB	
75	3-15/16	3	3-1/2	3.8	100	76	89	1.7	3	C0075E1BFB	
100	4-1/4	3-3/8	3-3/8	4.6	108	86	86	2.1	3	C0100E1BFB	
150	4-9/16	3-3/4	4	6.9	116	95	102	3.1	3	C0150E1BFB	
200	5-3/16	4-1/2	4	8.5	132	114	102	3.9	3	C0200E1BFB	
250	5-3/16	4-1/2	4-3/8	10.3	132	114	111	4.7	3	C0250E1BFB	
300	5-3/16	4-1/2	4-3/4	11.4	132	114	121	5.2	3	C0300E1BFB	
350	5-3/16	4-1/2	5-1/4	13.4	132	114	133	6.1	3	C0350E1BFB	
500	6-1/8	5-1/4	5-5/8	17.7	156	133	143	8.0	3	C0500E1BFB	

Primary: 208/277
Secondary: 120 with Fuse Clips for 13/32 x 1-1/2 Fuses

50	3-15/16	3	3	3.1	100	76	76	1.4	4	C0050E3AFB	
75	3-15/16	3	3-1/2	4.0	100	76	89	1.8	4	C0075E3AFB	
100	4-1/4	3-3/8	3-3/8	4.7	108	86	86	2.1	4	C0100E3AFB	
150	4-9/16	3-3/4	4	7.1	116	95	102	3.2	4	C0150E3AFB	
200	5-3/16	4-1/2	4	8.9	132	114	102	4.0	4	C0200E3AFB	
250	5-3/16	4-1/2	4-3/8	10.4	132	114	111	4.7	4	C0250E3AFB	
300	5-3/16	4-1/2	4-3/4	11.6	132	114	121	5.3	4	C0300E3AFB	
350	5-3/16	4-1/2	5-1/4	13.9	132	114	133	6.3	4	C0350E3AFB	
500	6-1/8	5-1/4	5-3/8	17.4	156	133	143	7.9	4	C0500E3AFB	

① See Page 9-24 for Wiring Diagrams.

NOTE: For additional information, refer to Cutler-Hammer Industrial Control Transformer Binder B1228A.

*Prices — Consult Sales Office or Price List

Transformers with Primary Fuse Blocks

VA	Dimensions (Inches)			Weight Lbs.	Dimensions (mm)			Weight kg	Wiring Diagram ①	Catalog Number	*
	H	W	D		H	W	D				

Primary: 550/575/600

Secondary: 110/115/120 with Fuse Clips for 13/32 x 1-1/2 Fuses

50	3-15/16	3	3	2.9	100	76	76	1.3	10	C0050E4CFB	
75	3-15/16	3	3-1/2	3.8	100	76	89	1.7	10	C0075E4CFB	
100	4-1/4	3-3/8	3-3/8	4.4	108	86	86	2.0	10	C0100E4CFB	
150	4-9/16	3-3/4	4	7.0	116	95	102	3.2	10	C0150E4CFB	
200	5-3/16	4-1/2	4	8.6	132	114	102	3.9	10	C0200E4CFB	
250	5-3/16	4-1/2	4-3/8	10.2	132	114	111	4.6	10	C0250E4CFB	
300	5-3/16	4-1/2	4-3/4	11.5	132	114	121	5.2	10	C0300E4CFB	
350	5-3/16	4-1/2	5-1/4	13.8	132	114	133	6.3	10	C0350E4CFB	
500	6-1/8	5-1/4	5-3/8	17.0	156	133	137	7.7	10	C0500E4CFB	
750	6-1/8	5-1/4	7	25.9	156	133	178	11.8	10	C0750E4CFB	

Primary: 380/400/415

Secondary: 22/23/24 with Fuse Clips for 13/32 x 1-1/2 Fuses

50	2-9/16	3	3	2.6	65	76	76	1.2	13	C0050E4HFB	
75	2-9/16	3	3-1/2	3.7	65	76	89	1.7	13	C0075E4HFB	
100	2-7/8	3-3/8	3-3/8	4.2	73	86	86	1.9	13	C0100E4HFB	
150	3-3/16	3-3/4	4	6.7	81	95	102	3.0	13	C0150E4HFB	
200	3-13/16	4-1/2	4	8.4	97	114	102	3.8	13	C0200E4HFB	
250	3-13/16	4-1/2	4-3/8	10.2	97	114	111	4.6	13	C0250E4HFB	

Primary: 550/575/600

Secondary: 22/23/24 with Fuse Clips for 13/32 x 1-1/2 Fuses

50	2-9/16	3	3	2.7	65	76	76	1.2	12	C0050E4WFB	
75	2-9/16	3	3-1/2	3.7	65	76	89	1.7	12	C0075E4WFB	
100	2-7/8	3-3/8	3-3/8	4.2	73	86	86	1.9	12	C0100E4WFB	
150	3-3/16	3-3/4	4	6.7	81	95	102	3.0	12	C0150E4WFB	
200	3-13/16	4-1/2	4	8.4	97	114	102	3.8	12	C0200E4WFB	
250	3-13/16	4-1/2	4-3/8	10.2	97	114	111	4.6	12	C0250E4WFB	

① See Pages 9-24 and 9-25 for Wiring Diagrams.

NOTE: For additional information, refer to Cutler-Hammer Industrial Control Transformer Binder B1228A.

*Prices — Consult Sales Office or Price List

CONTROL POWER TRANSFORMERS

Transformers with Primary Fuse Blocks

VA	Dimensions (Inches)			Weight Lbs.	Dimensions (mm)			Weight kg	Wiring Diagram ①	Catalog Number	*
	H	W	D		H	W	D				

Primary: 230/460/575

Secondary: 115/95 with Fuse Clips for 13/32 x 1-1/2 Fuses

50	3-13/16	3	3	3.7	97	76	76	1.7	5	C0050E3CFB	
75	4-1/4	3-3/8	3-3/8	4.7	108	86	86	2.1	5	C0075E3CFB	
100	4-1/4	3-3/8	3-7/8	6.2	108	86	98	2.8	5	C0100E3CFB	
150	4-9/16	3-3/4	4-1/4	7.9	116	95	108	3.6	5	C0150E3CFB	
200	5-3/16	4-1/2	4-1/4	9.2	132	114	108	4.2	5	C0200E3CFB	
250	5-3/16	4-1/2	4-3/4	9.9	132	114	121	4.5	5	C0250E3CFB	
300	5-3/16	4-1/2	5-1/8	11.9	132	114	130	5.4	5	C0300E3CFB	
350	6-1/8	5-1/4	5	16.7	156	133	127	7.6	5	C0350E3CFB	
500	6-1/8	5-1/4	5-7/8	21.7	156	133	149	9.9	5	C0500E3CFB	

Primary: 230/460/575

Secondary: 115/95 with Fuse Clips for 13/32 x 1-1/2 Fuses

50	3-15/16	3	3	3.2	100	76	76	1.5	6	C0050E4DFB	
75	3-15/16	3	3-1/2	4.2	100	76	89	1.9	6	C0075E4DFB	
100	4-1/4	3-3/8	3-9/16	5.4	108	86	90	2.5	6	C0100E4DFB	
150	4-9/16	3-3/4	4	7.2	116	95	102	3.3	6	C0150E4DFB	
200	5-3/16	4-1/2	4	8.9	132	114	102	4.0	6	C0200E4DFB	
250	5-3/16	4-1/2	4-3/8	10.4	132	114	111	4.7	6	C0250E4DFB	
300	5-3/16	4-1/2	4-3/4	11.2	132	114	121	5.1	6	C0300E4DFB	
350	5-3/16	4-1/2	5-1/4	13.2	132	114	133	6.0	6	C0350E4DFB	
500	6-1/8	5-1/4	5-5/8	20.2	156	133	143	9.2	6	C0500E4DFB	

Primary: 200/220/440, 208/230/460, 240/480 with Dual Primary Fuse Block

Secondary: 23/110, 24/115, 25/120 with Fuse Clips for 13/32 x 1-1/2 Fuses

50	3-15/16	3	3-1/4	3.6	100	76	83	1.6	7	C0050E5EFB	
75	4-1/4	3-3/8	3-1/2	5.0	108	86	89	2.3	7	C0075E5EFB	
100	4-9/16	3-3/4	3-5/8	6.1	116	95	92	2.8	7	C0100E5EFB	
150	4-9/16	3-3/4	4-3/8	8.1	116	95	111	3.7	7	C0150E5EFB	
200	5-3/16	4-1/2	4-1/2	10.8	132	114	114	4.9	7	C0200E5EFB	
250	5-3/16	4-1/2	5-1/4	14.1	132	114	133	6.4	7	C0250E5EFB	
300	6-1/8	5-1/4	5-1/8	15.7	156	133	130	7.1	7	C0300E5EFB	
350	6-1/8	5-1/4	5-3/8	17.0	156	133	136	7.7	7	C0350E5EFB	
500	6-1/8	5-1/4	6-7/8	23.6	156	133	175	10.7	7	C0500E5EFB	

Universal Design (MTG Open Core-Coil, MTE Epoxy Encapsulated)

Primary: 240/416/480/600, 230/400/460/575, 220/380/440/550, 208/500 with Dual Primary Fuse Block

Secondary: 99/120/130, 95/115/125, 91/110/120, 85/100/110 with Fuse Clips for 13/32 x 1-1/2 Fuses

50	4-1/4	3-3/8	4	4.2	108	86	102	1.9	8	C0050G6UFB ②	
100	4-9/16	3-3/4	4-5/8	6.8	116	95	117	3.1	8	C0100G6UFB ②	
150	5-3/16	4-1/2	4-7/16	9.0	132	114	113	4.1	8	C0150G6UFB ②	
250	5-3/16	4-1/2	5-7/8	14.9	132	114	149	6.8	8	C0250E6UFB ③	
350	5-13/16	5-1/4	5-5/8	18.8	148	133	143	8.5	8	C0350E6UFB ③	
500	5-13/16	5-1/4	7	25.8	148	133	178	11.7	8	C0500E6UFB ③	

① See Page 9-24 for Wiring Diagrams.

② Type MTG Open Core-Coil Universal Design.

③ Type MTE Epoxy Encapsulated Universal Design.

NOTE: For additional information, refer to Cutler-Hammer Industrial Control Transformer Binder B1228A.

*Prices — Consult Sales Office or Price List

Features

- Epoxy resin impregnated coil design.
- UL Listed, CSA Certified.
- 115°C rise, Class 180 insulation system.
- Copper magnet wire for high quality, efficient operation.
- 50/60 Hz.

Type MTK

VA	Dimensions (Inches)			Weight Lbs.	Dimensions (mm)			Weight kg	Wiring Diagram ①	Catalog Number	*
	H	W	D		H	W	D				

Primary: 240 x 480, 230 x 460, 220 x 440
Secondary: 120/115/110

500	3-13/16	4-1/2	6	13.0	97	114	152	5.9	1	C0500K2A	
750	4-7/16	5-1/2	6-1/2	19.5	113	133	165	8.9	1	C0750K2A	
1000	4-7/16	5-1/4	7-7/8	29.8	113	133	200	13.6	1	C1000K2A	
1500	5-11/16	6-3/4	6-3/4	30.0	144	171	171	13.6	1	C1500K2A	
2000	5-11/16	6-3/4	7	38.0	144	171	178	17.3	1	C2000K2A	
3000	7-9/16	9	7-1/2	53.0	192	229	191	24.1	1	C3000K2A	
5000	7-9/16	9	7-3/4	89.0	192	229	197	40.5	1	C5000K2A	

Primary: 208/277
Secondary: 120

1000	5-3/8	6-3/8	7-1/8	29.0	137	162	181	13.1	4	C1000K3A	
1500	5-11/16	6-3/4	7-1/2	33.0	144	171	191	15.0	4	C1500K3A	
2000	5-11/16	6-3/4	8-1/4	43.0	144	171	210	19.5	4	C2000K3A	
3000	7-5/8	9	8-1/4	64.0	194	229	210	29.0	4	C3000K3A	
5000	10-3/16	9	10-1/2	102.0	259	229	267	46.3	4	C5000K3A	

Primary: 230/460/575
Secondary: 115/95

1000	5-3/8	6-3/8	7-1/8	29.2	137	162	184	13.3	5	C1000K3C	
1500	5-11/16	6-3/4	8-1/4	33.5	144	171	210	15.2	5	C1500K3C	
2000	7-9/16	9	7-9/16	42.5	192	229	192	19.3	5	C2000K3C	
3000	7-9/16	9	8-5/8	63.7	192	229	219	29.0	5	C3000K3C	
5000	7-3/16	9	13-1/2	102.0	259	229	343	46.4	5	C5000K3C	

Primary: 208/380/416
Secondary: 115/95

1000	5-3/8	6-3/8	7-1/8	29.0	137	162	181	13.1	9	C1000K3D	
1500	5-11/16	6-3/4	8-1/4	43.0	144	171	210	19.5	9	C1500K3D	
2000	5-11/16	6-3/4	9-1/4	55.0	144	171	235	25.0	9	C2000K3D	
3000	7-5/8	9	8-5/8	74.0	194	229	219	33.5	9	C3000K3D	
5000	10-3/16	9	11	108.0	259	229	279	49.0	9	C5000K3D	

Primary: 550/575/600
Secondary: 110/115/120

1000	5-3/8	6-3/8	7-1/8	29.0	137	162	181	13.1	10	C1000K4C	
1500	5-11/16	6-3/4	7-1/2	33.0	144	171	191	15.0	10	C1500K4C	
2000	5-11/16	6-3/4	8-1/4	43.0	144	171	210	19.5	10	C2000K4C	
3000	7-5/8	9	8-1/4	64.0	194	229	210	29.0	10	C3000K4C	
5000	10-3/16	9	10-1/2	102.0	259	229	267	46.3	10	C5000K4C	

Primary: 380/400/415
Secondary: 110 x 220

1000	5-11/16	6-3/4	6-1/2	28.0	144	171	165	12.7	6	C1000K4D	
1500	5-11/16	6-3/4	7-1/2	33.0	144	171	191	15.0	6	C1500K4D	
2000	5-11/16	6-3/4	8-1/4	43.0	144	171	210	19.5	6	C2000K4D	
3000	7-5/8	9	8-1/4	64.0	194	229	210	29.0	6	C3000K4D	
5000	10-3/16	9	10-1/2	102.0	259	229	267	46.3	6	C5000K4D	

① See Page 9-24 for Wiring Diagrams.

NOTE: For additional information, refer to Cutler-Hammer Industrial Control Transformer Binder B1228A.

*Prices — Consult Sales Office or Price List

Type MTK

VA	Dimensions (Inches)			Weight Lbs.	Dimensions (mm)			Weight kg	Wiring Diagram ①	Catalog Number	*
	H	W	D		H	W	D				

Primary: 240 x 480 with Jumpers

Secondary: 120 x 240 with Jumpers, Fuse Clips Not Applicable

1000	4-7/16	5-1/4	7-7/8	26.4	113	133	200	12.0	11	C1000K2CXX	
1500	5-11/16	6-3/4	7-1/4	31.0	144	171	184	14.1	11	C1500K2CXX	
2000	5-3/4	6-3/4	8	40.0	146	171	203	18.2	11	C2000K2CXX	
3000	7-5/8	9	7-1/2	56.0	194	229	191	25.5	11	C3000K2CXX	
5000	7-5/8	9	9-1/4	85.5	194	229	235	28.9	11	C5000K2CXX	

Primary: 120 x 240 with Jumpers

Secondary: 24

750	4-1/2	5-1/4	6-3/4	19.0	114	133	171	8.6	3	C0750K1B	
1000	4-1/2	5-1/4	8-3/4	26.4	114	133	222	12.0	3	C1000K1B	

Primary: 240/416/480/600, 230/400/460/575, 220/380/440/550, 208/500

Secondary: 99/120/130, 95/115/125, 91/110/120, 85/100/110

1000	5-3/4	6-3/4	6-1/2	26.5	146	171	165	12.0	8	C1000K6U	
1500	5-3/4	6-3/4	7-7/8	38.5	146	171	200	17.5	8	C1500K6U	
2000	5-3/4	6-3/4	9-3/16	52.0	146	171	233	23.6	8	C2000K6U	
3000	7-3/4	9	7-1/2	68.0	197	229	191	30.9	8	C3000K6U	
5000	9-7/8	9	10-1/2	105.0	248	229	267	47.7	8	C5000K6U	

① See Pages 9-24 and 9-25 for Wiring Diagrams.

NOTE: For additional information, refer to Cutler-Hammer Industrial Control Transformer Binder B1228A.

*Prices — Consult Sales Office or Price List



Features

- Epoxy encapsulated coils.
- UL Listed, CSA Certified.
- Provides step-down voltages to machine tool control devices.
- Isolates control circuits from power and lighting circuits.
- Laminations of high quality silicon steel to minimize core losses and optimize performance.
- Copper magnet wire for high quality, efficient operation.
- Molded-in terminals.
- 55°C rise, Class 105 insulation system.
- 50/60 Hz.
- Non-short circuit proof transformer, isolating type.

VA	Dimensions (Inches)			Weight Lbs.	Dimensions (mm)			Weight kg	Wiring Diagram ①	Catalog Number	*
	H	W	D		H	W	D				

Primary: 240 x 480, 230 x 460, 220 x 440 with Jumpers
Secondary: 120/115/110

50	2-9/16	3	3-3/8	3.5	65	76	86	1.6	1	CE0050E2A	
75	2-7/8	3-3/8	3-1/2	4.8	73	86	89	2.2	1	CE0075E2A	
100	3-3/16	3-3/4	3-5/8	5.9	81	95	92	2.7	1	CE0100E2A	
150	3-13/16	4-1/2	4	8.5	97	114	102	3.9	1	CE0150E2A	
200	3-13/16	4-1/2	4-1/2	10.6	97	114	114	4.8	1	CE0200E2A	
250	3-13/16	4-1/2	4-3/4	11.3	97	114	121	5.1	1	CE0250E2A	
300	3-13/16	4-1/2	5-1/4	13.2	97	114	133	6.0	1	CE0300E2A	
350	4-3/4	5-1/4	5	14.9	121	133	127	6.8	1	CE0350E2A	
500	4-3/4	5-1/4	6	21.0	121	133	152	9.5	1	CE0500E2A	
750	4-3/4	5-1/4	7-3/8	29.8	121	133	187	13.5	1	CE0750E2A	

Primary: 240 x 480 with Jumpers
Secondary: 24

50	2-9/16	3	3-1/4	3.4	65	76	83	1.5	2	CE0050E2B	
75	2-7/8	3-3/8	3-1/4	4.2	73	86	83	1.9	2	CE0075E2B	
100	3-3/16	3-3/4	3-5/8	5.9	81	95	92	2.7	2	CE0100E2B	
150	3-13/16	4-1/2	4	8.5	97	114	102	3.9	2	CE0150E2B	
200	3-13/16	4-1/2	4-1/4	10.6	97	114	108	4.5	2	CE0200E2B	
250	3-13/16	4-1/2	4-3/4	11.3	97	114	121	5.1	2	CE0250E2B	
300	3-13/16	4-1/2	5-1/4	13.2	97	114	133	6.0	2	CE0300E2B	
350	4-3/4	5-1/4	5	14.9	121	133	127	6.8	2	CE0350E2B	
500	4-3/4	5-1/4	5-1/2	19.2	121	133	140	8.7	2	CE0500E2B	
750	4-3/4	5-1/4	7	28.1	121	133	178	12.8	2	CE0750E2B	

Primary: 120 x 240 with Jumpers
Secondary: 24

50	2-9/16	3	3-1/4	3.4	65	76	83	1.5	3	CE0050E1B	
75	2-7/8	3-3/8	3-1/4	4.2	73	86	83	1.9	3	CE0075E1B	
100	3-3/16	3-3/4	3-5/8	5.9	81	95	92	2.7	3	CE0100E1B	
150	3-13/16	4-1/2	4	8.5	97	114	102	3.9	3	CE0150E1B	
200	3-13/16	4-1/2	4-1/4	10.6	97	114	108	4.5	3	CE0200E1B	
250	3-13/16	4-1/2	4-3/4	11.3	97	114	121	5.1	3	CE0250E1B	
300	3-13/16	4-1/2	5-1/4	13.2	97	114	133	6.0	3	CE0300E1B	
350	4-3/4	5-1/4	5	14.9	121	133	127	6.8	3	CE0350E1B	
500	4-3/4	5-1/4	5-1/2	19.2	121	133	140	8.7	3	CE0500E1B	
750	4-3/4	5-1/4	7-3/8	29.8	121	133	187	13.5	3	CE0750E1B	

Primary: 550/575/600
Secondary: 110/115/120

50	2-9/16	3	3-3/8	3.5	65	76	86	1.6	10	CE0050E4C	
75	2-7/8	3-3/8	3-1/2	4.8	73	86	89	2.2	10	CE0075E4C	
100	3-3/16	3-3/4	3-5/8	5.9	81	95	92	2.7	10	CE0100E4C	
150	3-13/16	4-1/2	4	8.5	97	114	102	3.9	10	CE0150E4C	
200	3-13/16	4-1/2	4-1/2	10.6	97	114	114	4.8	10	CE0200E4C	
250	3-13/16	4-1/2	4-3/4	11.3	97	114	121	5.1	10	CE0250E4C	
300	3-13/16	4-1/2	5-1/4	13.2	97	114	133	6.0	10	CE0300E4C	
350	4-3/4	5-1/4	5	14.9	121	133	127	6.8	10	CE0350E4C	
500	4-3/4	5-1/4	6	21.0	121	133	152	9.5	10	CE0500E4C	
750	4-3/4	5-1/4	7-3/8	29.8	121	133	187	13.5	10	CE0750E4C	

① See Page 9-24 for Wiring Diagrams.

NOTE: Transformers are designed to operate in a maximum ambient of 40°C.

*Prices — Consult Sales Office or Price List



CONTROL POWER TRANSFORMERS

VA	Dimensions (Inches)			Weight Lbs.	Dimensions (mm)			Weight kg	Wiring Diagram ①	Catalog Number	*
	H	W	D		H	W	D				

Primary: 380/400/415
Secondary: 110 x 220 with Jumpers

50	2-9/16	3	3-1/2	3.5	65	76	89	1.6	6	CE0050E4D	
75	2-7/8	3-3/8	3-1/2	4.8	73	86	89	2.2	6	CE0075E4D	
100	3-3/16	3-3/4	3-5/8	5.9	81	95	92	2.7	6	CE0100E4D	
150	3-13/16	4-1/2	4	8.5	97	114	102	3.9	6	CE0150E4D	
200	3-13/16	4-1/2	4-1/2	10.6	97	114	114	4.8	6	CE0200E4D	
250	3-13/16	4-1/2	4-3/4	11.3	97	114	121	5.1	6	CE0250E4D	
300	3-13/16	4-1/2	5-1/4	13.2	97	114	133	6.0	6	CE0300E4D	
350	3-13/16	4-1/2	5-1/2	15.2	97	114	140	6.9	6	CE0350E4D	
500	4-3/4	5-1/4	6	21.0	121	133	152	9.5	6	CE0500E4D	
750	4-3/4	5-1/4	7-3/8	29.8	121	133	187	13.5	6	CE0750E4D	

Primary: 200/220/440, 208/230/460, 240/480
Secondary: 23/110, 24/115, 25/120

50	2-7/8	3-3/8	3-1/4	4.2	65	86	83	1.9	7	CE0050E5E	
75	3-3/16	3-3/4	3-5/8	5.9	81	95	92	2.7	7	CE0075E5E	
100	3-3/16	3-3/4	4-3/8	7.9	81	95	111	3.6	7	CE0100E5E	
150	3-13/16	4-1/2	4-1/4	10.0	97	114	108	4.5	7	CE0150E5E	
200	3-13/16	4-1/2	5	12.8	97	114	127	5.8	7	CE0200E5E	
250	3-13/16	4-1/2	5-1/2	15.2	97	114	140	6.9	7	CE0250E5E	
300	4-3/4	5-1/4	5-3/8	16.8	121	133	137	7.6	7	CE0300E5E	
350	4-3/4	5-1/4	5-1/2	19.2	121	133	140	8.7	7	CE0350E5E	
500	4-3/4	5-1/4	7-1/4	27.0	121	133	184	12.3	7	CE0500E5E	

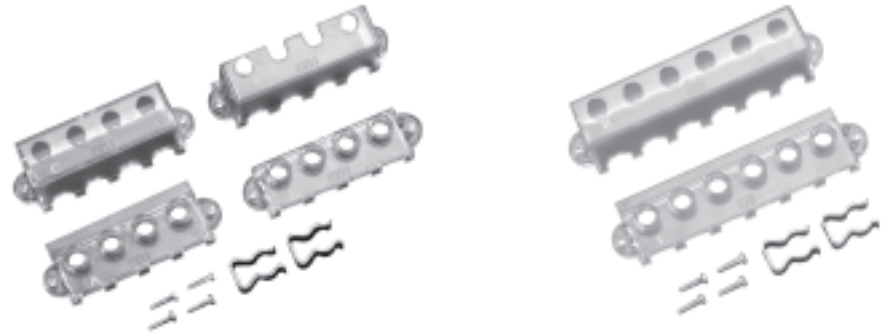
① See Pages 9-24 and 9-25 for Wiring Diagrams.

NOTE: Transformers are designed to operate in a maximum ambient of 40°C.

Finger-Safe Terminal Covers (Optional)

- Fits CE marked designs 50 – 750 VA
- Fits MTE and MTG designs 25 – 750 VA

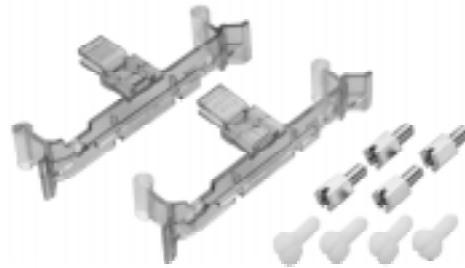
Catalog Number	*
FSK4 (for 4 Terminal Transformers)	
FSK6 (for 6 Terminal Transformers)	



Finger-Safe Primary Fuse Block Covers

- Fits 2-pole primary fuse blocks on MTE and MTG designs

Catalog Number	*
FSKB	



*Prices — Consult Sales Office or Price List



With Factory Mounted Finger-Safe Terminal Covers



Terminal Type A



Terminal Type B



Terminal Type C

CONTROL POWER TRANSFORMERS

VA	Dimensions (Inches)			Weight Lbs.	Dimensions (mm)			Weight kg	Terminal Type	Wiring Diagram ①	Catalog Number	*
	H	W	D		H	W	D					
Primary: 240 x 480, 230 x 460, 220 x 440 with Jumpers												
Secondary: 120/115/110												
250	4	4-1/2	4-5/16	8.8	102	114	110	4.0	A	1	CE0250K2AFS	
300	4	4-1/2	4-7/8	11.0	102	114	124	5.0	A	1	CE0300K2AFS	
350	4	4-1/2	5-3/16	11.2	102	114	132	5.1	A	1	CE0350K2AFS	
500	4	4-1/2	5-5/8	14.8	102	114	143	6.7	A	1	CE0500K2AFS	
750	4-1/2	5-1/4	5-15/16	18.0	114	133	151	8.2	A	1	CE0750K2AFS	
1000	5-5/16	6-3/8	5-5/16	26.3	135	162	135	11.9	A	1	CE1000K2AFS	
1500	7-1/2	6-3/4	6-1/8	40.0	191	172	156	18.1	C	1	CE1500K2AFS	
2000	7-1/2	6-3/4	6-7/16	45.1	191	172	164	20.5	C	1	CE2000K2AFS	
3000	9-3/8	9	6-1/4	65.2	238	229	159	29.6	C	1	CE3000K2AFS	
5000	9-3/8	9	8-3/4	104.8	238	229	222	47.5	C	1	CE5000K2AFS	

Primary: 240 x 480 with Jumpers
Secondary: 24

250	5-5/8	4-1/2	3-1/4	8.2	143	114	83	3.7	C	2	CE0250K2BFS	
300	5-5/8	4-1/2	3-5/8	9.5	143	114	92	4.3	C	2	CE0300K2BFS	
350	5-5/8	4-1/2	4-3/16	12.2	143	114	106	5.5	C	2	CE0350K2BFS	
500	5-5/8	4-1/2	4-11/16	14.4	143	114	119	6.5	C	2	CE0500K2BFS	
750	6-1/2	5-1/4	5-15/16	19.5	165	133	151	8.9	C	2	CE0750K2BFS	
1000	7-3/16	6-3/8	5-9/16	26.2	183	162	141	11.9	C	2	CE1000K2BFS	

Primary: 120 x 240 with Jumpers
Secondary: 24

250	5-5/8	4-1/2	3-1/4	8.3	143	114	83	3.8	C	3	CE0250K1BFS	
300	5-5/8	4-1/2	3-5/8	9.3	143	114	92	4.2	C	3	CE0300K1BFS	
350	5-5/8	4-1/2	4-3/16	12.0	143	114	106	5.4	C	3	CE0350K1BFS	
500	5-5/8	4-1/2	4-13/16	14.4	143	114	122	6.5	C	3	CE0500K1BFS	
750	6-1/2	5-1/4	5-15/16	19.5	165	133	151	8.9	C	3	CE0750K1BFS	
1000	7-3/16	6-3/8	5-9/16	25.2	183	162	141	11.4	C	3	CE1000K1BFS	

Primary: 200/220/440, 208/230/460, 240/480
Secondary: 23/110, 24/115, 25/120

250	3-7/8	4-1/2	4-7/16	12.5	98	114	113	5.7	B	7	CE0250K5EFS	
300	3-7/8	4-1/2	4-3/4	14.0	98	114	121	6.3	B	7	CE0300K5EFS	
350	3-7/8	4-1/2	5-3/16	15.3	98	114	140	6.9	B	7	CE0350K5EFS	
500	5-1/16	5-1/4	6-1/4	20.8	129	133	159	9.4	B	7	CE0500K5EFS	
750	7-3/16	6-3/8	5-13/16	29.8	183	162	148	13.5	C	7	CE0750K5EFS	
1000	7-3/16	6-3/8	6-3/16	30.2	183	162	157	13.7	C	7	CE1000K5EFS	

Primary: 220/380/440/550, 230/400/460/575, 240/416/480/600
Secondary: 23/110, 24/115, 25/120

250	3-7/8	4-1/2	5-3/8	14.3	98	114	137	6.5	B	14	CE0250K2UFS	
300	3-7/8	4-1/2	5-11/16	15.8	98	114	144	7.2	B	14	CE0300K2UFS	
350	4-7/16	5-1/4	5-1/2	16.5	113	133	140	7.5	B	14	CE0350K2UFS	
500	5-1/16	5-1/4	6-3/16	20.5	129	133	157	9.3	B	14	CE0500K2UFS	
750	7-3/16	6-3/8	5-11/16	28.8	183	162	144	13.1	C	14	CE0750K2UFS	
1000	7-3/16	6-3/8	6-7/8	39.4	183	162	175	17.9	C	14	CE1000K2UFS	

① See Pages 9-24 and 9-25 for Wiring Diagrams.

NOTE: For additional information, refer to Cutler-Hammer Industrial Control Transformer Binder B1228A.

*Prices — Consult Sales Office or Price List



With Factory Mounted Finger-Safe Terminal Covers

CONTROL POWER TRANSFORMERS

VA	Dimensions (Inches)			Weight Lbs.	Dimensions (mm)			Weight kg	Terminal Type	Wiring Diagram ①	Catalog Number	*
	H	W	D		H	W	D					

Primary: 208/230/400/460/575
Secondary: 24[ⓐ]/115/230

250	3-7/8	4-1/2	5-1/2	14.9	98	114	140	6.8	B	15	CE0250K2VFS	
300	3-7/8	4-1/2	6-1/16	17.4	98	114	154	7.9	B	15	CE0300K2VFS	
350	4-7/16	5-1/4	5-3/4	17.8	113	133	146	8.1	B	15	CE0350K2VFS	
500	4-7/16	5-1/4	7-5/16	26.6	113	133	186	12.1	B	15	CE0500K2VFS	
750	5-15/16	6-3/8	6-3/16	32.5	151	162	157	14.7	B	15	CE0750K2VFS	
1000	7-1/2	6-3/4	6-7/8	44.0	191	172	175	20.0	C	15	CE1000K2VFS	
1500	7-1/2	6-3/4	6-3/4	45.4	191	172	172	20.6	C	16	CE1500K2WFS	
2000	9-3/8	9	6-1/4	58.6	238	229	159	26.6	C	16	CE2000K2WFS	
3000	9-3/8	9	8-1/8	92.9	238	229	206	42.1	C	16	CE3000K2WFS	
5000	9-3/8	9	9-15/16	127.4	238	229	252	57.8	C	16	CE5000K2WFS	

Primary: 240/416/480/600, 230/400/460/575, 220/380/440/550, 208/500
Secondary: 99/120/130, 95/115/125, 91/110/120, 85/100/110

250	4	4-1/2	5-1/16	11.4	102	114	135	5.2	A	8	CE0250K6UFS	
300	4	4-1/2	5-1/2	13.6	102	114	140	6.2	A	8	CE0300K6UFS	
350	4	4-1/2	5-1/2	14.2	102	114	140	6.4	A	8	CE0350K6UFS	
500	4-1/2	5-1/4	5-5/8	17.4	114	133	143	7.9	A	8	CE0500K6UFS	
750	4-1/2	5-1/4	5-5/8	27.5	114	133	187	12.5	A	8	CE0750K6UFS	
1000	5-1/4	6-3/8	6-1/16	27.9	133	162	154	12.6	A	8	CE1000K6UFS	
1500	5-13/16	6-3/4	6-5/16	43.1	148	172	160	19.5	A	8	CE1500K6UFS	
2000	7-5/8	9	5-3/4	56.0	194	229	146	25.4	B	8	CE2000K6UFS	
3000	8-1/4	9	6-9/16	76.2	210	229	167	34.6	B	8	CE3000K6UFS	

① See Pages 9-24 and 9-25 for Wiring Diagrams.

ⓐ 24V secondary only available through 1000 VA.

NOTE: For additional information, refer to Cutler-Hammer Industrial Control Transformer Binder B1228A.

*Prices — Consult Sales Office or Price List



CONTROL POWER TRANSFORMERS

- Protection Index – IP00
- Protection Index with supplied terminal covers attached to primary, secondary and fuse block terminals – IP20

Acceptable Rating of Primary Overcurrent Protection

Sec. Volt.	50	75	100	150	200	250	300	350	500	750
------------	----	----	-----	-----	-----	-----	-----	-----	-----	-----

Fuses 10 x 38 mm (13/32" x 1 1/2") Time-Lag (IEC 269)

115	2.0	2.0	4.0	4.0	6.0	6.0	8.0	10.0	12.0	20.0
120	2.0	2.0	4.0	4.0	6.0	6.0	8.0	10.0	12.0	20.0
200	1.0	2.0	2.0	4.0	4.0	4.0	4.0	6.0	8.0	12.0
208	1.0	2.0	2.0	4.0	4.0	4.0	4.0	6.0	8.0	12.0
220	1.0	1.0	2.0	4.0	4.0	4.0	4.0	6.0	6.0	10.0
230	1.0	1.0	2.0	4.0	4.0	4.0	4.0	6.0	6.0	10.0
240	1.0	1.0	2.0	4.0	4.0	4.0	4.0	6.0	6.0	10.0
277	.5	1.0	1.0	2.0	4.0	4.0	4.0	4.0	6.0	8.0
380	.5	1.0	1.0	2.0	2.0	4.0	4.0	4.0	6.0	6.0
400	.5	.5	1.0	2.0	2.0	4.0	4.0	4.0	4.0	6.0
415	.5	.5	1.0	1.0	2.0	4.0	4.0	4.0	4.0	6.0
440	.5	.5	1.0	1.0	2.0	2.0	4.0	4.0	4.0	6.0
460	.5	.5	1.0	1.0	2.0	2.0	4.0	4.0	4.0	6.0
480	.5	.5	.5	1.0	2.0	2.0	4.0	4.0	4.0	6.0
550	.5	.5	.5	1.0	1.0	2.0	2.0	4.0	4.0	4.0
575	.5	.5	.5	1.0	1.0	2.0	2.0	4.0	4.0	4.0
600	.5	.5	.5	1.0	2.0	2.0	2.0	4.0	4.0	4.0

Acceptable Maximum Rating of Secondary Overcurrent Protection

Sec. Volt.	50	75	100	150	200	250	300	350	500	750
------------	----	----	-----	-----	-----	-----	-----	-----	-----	-----

Miniature Fuses 5 x 20 mm Time-Lag (IEC 127-2/III)

23	2.50	4.00	5.00	8.00	10.0	12.00	16.00	16.00	25.00	—
24	2.50	4.00	5.00	8.00	10.0	12.00	16.00	16.00	25.00	32.00
25	2.50	4.00	5.00	8.00	10.0	12.00	16.00	16.00	25.00	32.00
90	.63	1.00	1.25	2.00	2.50	3.15	4.00	4.00	6.30	10.00
95	.63	.80	1.25	1.60	2.50	3.15	4.00	4.00	6.30	8.00
100	.50	.80	1.00	1.60	2.00	2.50	3.15	4.00	5.00	8.00
110	.50	.80	1.00	1.60	2.00	2.50	3.15	4.00	5.00	8.00
115	.50	.80	1.00	1.60	2.00	2.50	3.15	3.15	5.00	8.00
120	.50	.63	1.00	1.25	2.00	2.50	2.50	3.15	5.00	6.30
220	.25	.40	.50	.80	1.00	1.25	1.60	1.60	2.50	4.00
230	.25	.40	.50	.80	1.00	1.25	1.60	1.60	2.50	4.00
240	.25	.315	.50	.63	1.00	1.25	1.25	1.60	2.50	3.15

NOTE: For values over 6.3A, use 10 x 38 mm time-lag (IEC 269-3-1).

Ta = 40°C Control Type

MTE, MTG, MTK and CE Marked Transformers

CONTROL POWER TRANSFORMERS

Diagram 1

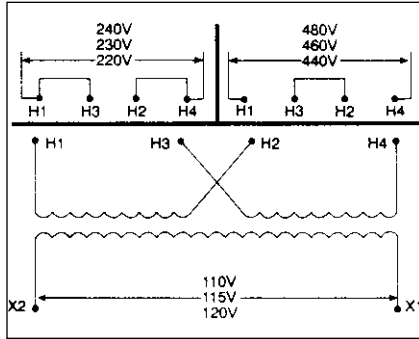


Diagram 5

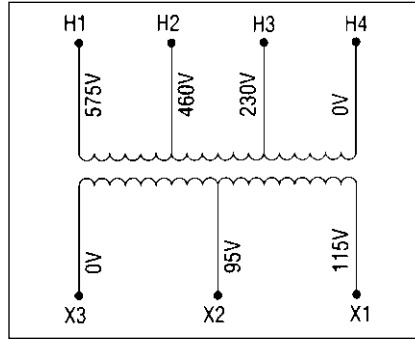


Diagram 9

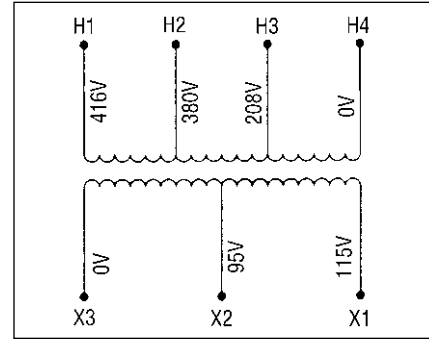


Diagram 2

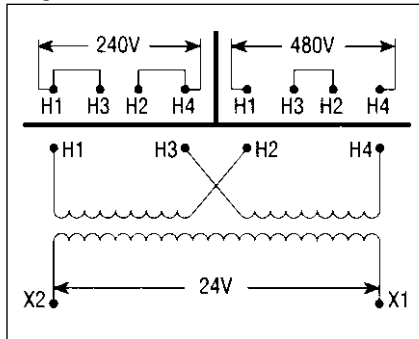


Diagram 6

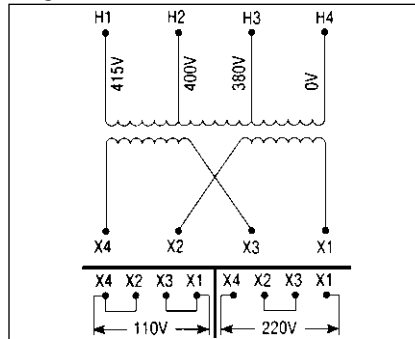


Diagram 10

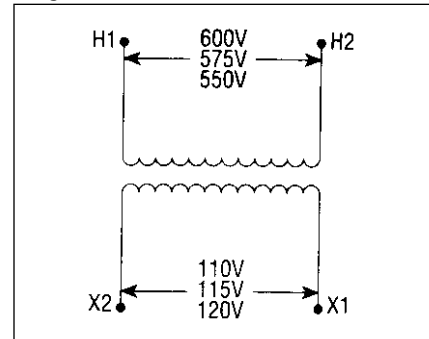


Diagram 3

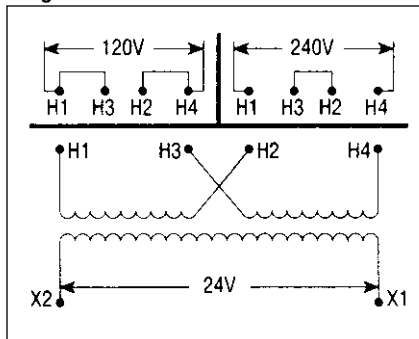


Diagram 7

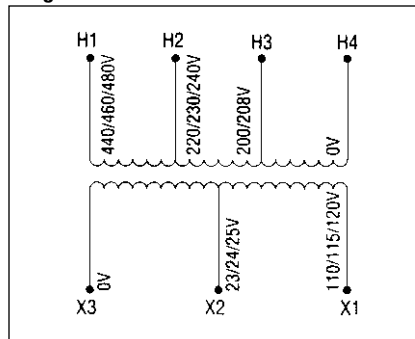


Diagram 4

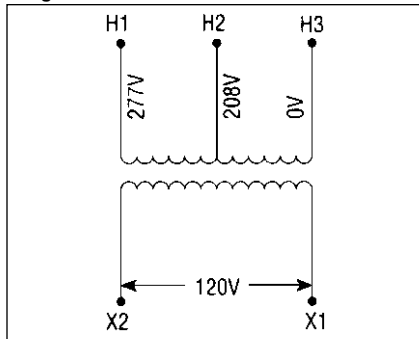


Diagram 8

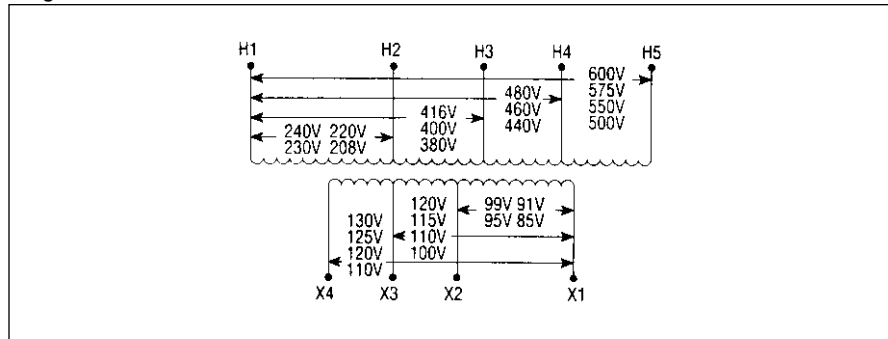


Diagram 11

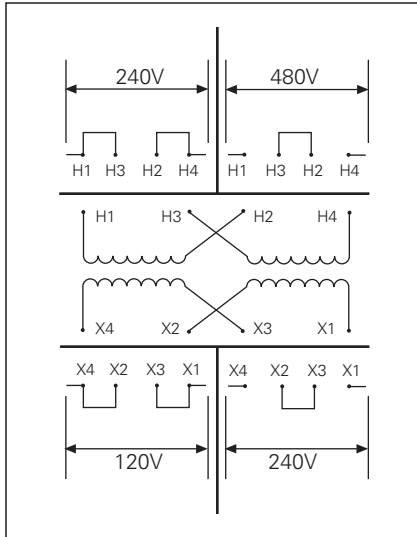


Diagram 14

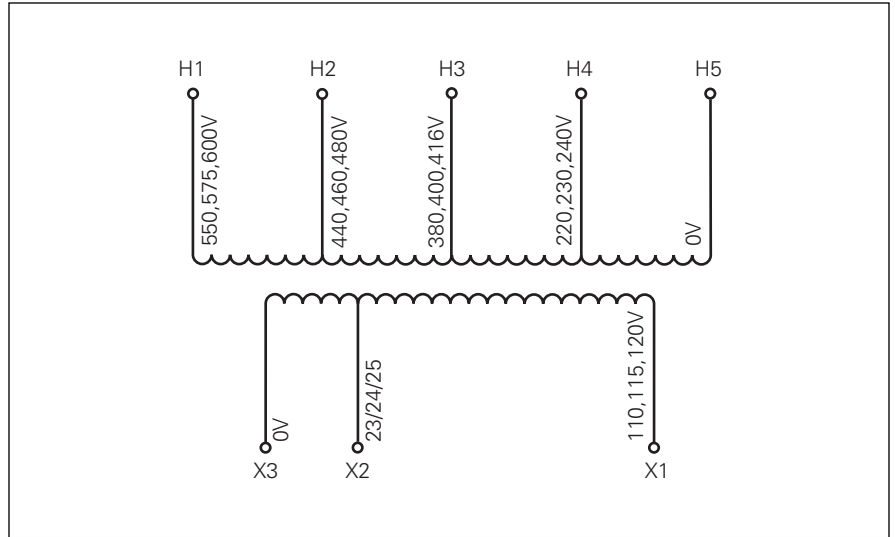


Diagram 12

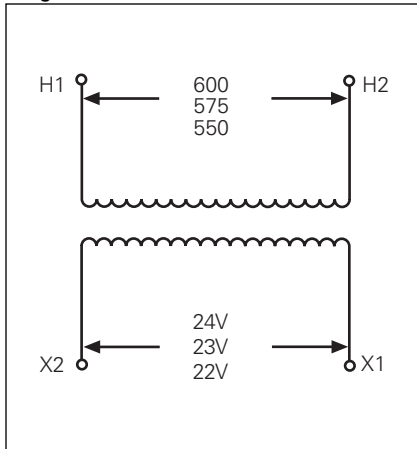


Diagram 15

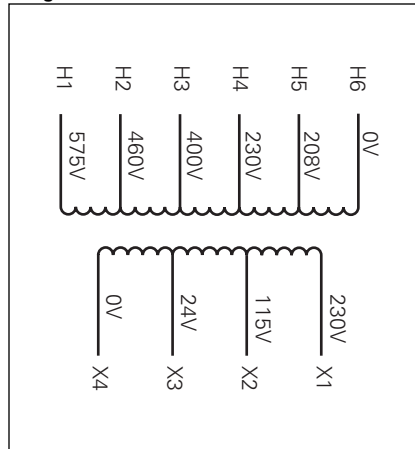


Diagram 13

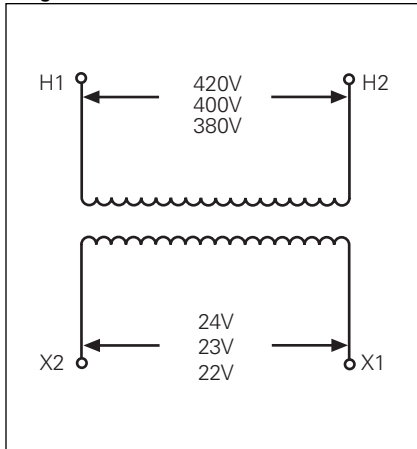


Diagram 16

