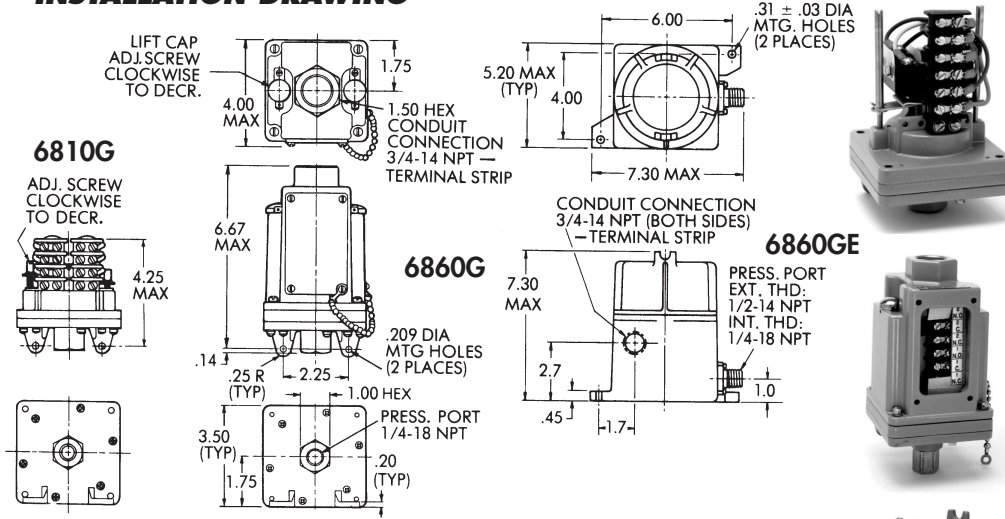


INSTALLATION DRAWING



Press. 1.5" H₂O to 100 psi

SERIES:
6810G 6860G
6812G 6862G
6860GE 6862GE

- Standard Features:**
- **Housed Models:**
NEMA: 4, 13
Weatherproof
 - **Model 6860GE, 6862GE**
Explosion Proof:
Designed to Meet
Div. 1, 2

AMBIENT TEMP. RANGE
-30° to 160° F
-34° to 71° C

Options Code:
"7008" Gold Contacts

6810G & 6812G
SHIPPING WT.
APPROX. 25 OZ.
(709 GRAMS)

6860G & 6862G
SHIPPING WT.
APPROX. 43 OZ.
(1219 GRAMS)

6860GE & 6862GE
SHIPPING WT.
APPROX. 7 LBS.
(3.2 KGS.)

OPERATING AND ORDERING DATA:

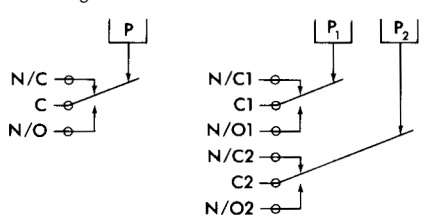
PRESSURE SWITCHES		1/4" ALUMINUM PRESSURE PORT & POLYIMIDE DIAPHRAGM						
MODEL 6810G • STRIPPED — SINGLE SETTING		MODEL 6860G • HOUSED — SINGLE SETTING						
MODEL 6812G • STRIPPED — DUAL SETTING		MODEL 6862G • HOUSED — DUAL SETTING						
Proof (Test) Press.	Adjustable Set-Point Range		Approx. Dead-band	Model Number and Wetted Parts				Wetted Parts
	On Incr. Press.	On Decr. Press.		Stripped Model		Housed Model		
				Single Setting	Dual Setting	Single Setting	Dual Setting	
50 psi	5 to 80" H ₂ O	1.5 to 76.5" H ₂ O	2.5" H ₂ O	6810G0	Not Avail.	6860G0	Not Avail.	Aluminum Polyimide Buna N
100 psi	1 to 27 psi	.95 to 26.75 psi	.1 to .2 psi	6810G1	6812G1	6860G1	6862G1	
250 psi	3 to 100 psi	2.8 to 98.5 psi	.2 to 1.0 psi	6810G3	6812G3	6860G3	6862G3	

PRESSURE SWITCHES		EXPLOSION PROOF — HOUSED — 1/2" EXT. THREADS, 1/4" INT. THREADS ALUMINUM PRESSURE PORT & POLYIMIDE DIAPHRAGM				
MODEL 6860GE • SINGLE SETTING		MODEL 6862GE • DUAL SETTING				
Proof (Test) Press.	Adjustable Set-Point Range		Approx. Dead-band	Model Number and Wetted Parts		Wetted Parts
	On Incr. Press.	On Decr. Press.		Single Setting	Dual Setting	
50 psi	5 to 80" H ₂ O	1.5 to 76.5" H ₂ O	2.5" H ₂ O	6860GE0	Not Avail.	Aluminum Polyimide Buna N
100 psi	1 to 27 psi	.95 to 26.75 psi	.1 to .2 psi	6860GE1	6862GE1	
250 psi	3 to 100 psi	2.8 to 98.5 psi	.2 to 1.0 psi	6860GE3	6862GE3	

ELECTRICAL CHARACTERISTICS:
RATING OF SWITCH ELEMENT

VOLTS	AMPERES	
	SPDT	Res.
125 AC - 50/60 Hz	1.5	
250 AC - 50/60 Hz	1.5	
28 DC	.5	

SCHEMATIC AND WIRING CODE:



ENCLOSURE/CERTIFICATIONS:

MODELS 6860GE, 6862 GE ONLY
Designed to meet the requirements of Division 1 and 2 explosion proof for hazardous locations, Class 1, Groups A, B, C, and D; Class 2 Groups E, F, and G.

Must be installed with an approved conduit seal and breather to meet the Division 1 and 2 requirements.

HOW TO ORDER: Specify model number, add desired "options" listing letter codes first followed by numbers:
Custom Control Sensors, Inc. • 21111 Plummer Street, Chatsworth, CA 91311 • Tel: (818)341-4610 • Fax: (818)709-0426
e-mail: switchnet@ccsdualsnap.com • http://www.ccsdualsnap.com