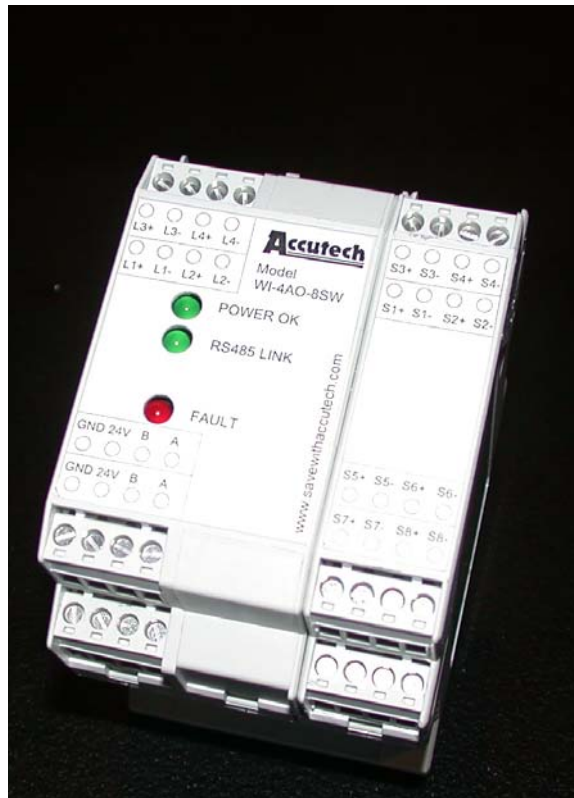

Analog/Digital Output Module User Manual



Analog/Digital Output Module Models WI-4AO, WI-8SW and WI-4AO-8SW

Versions 1.56 or later



Important Information to the User



- Changes or modifications not expressly approved by Adaptive Instruments, LLC may void the user's authority to operate the equipment.
- If the Wireless Instrumentation Manager (RF Server) software is shutdown, the RS-485 network **MUST be physically disconnected** from the PC as the serial port is no longer being controlled by the software and may disrupt communications between the Base Radio(s) and Analog/Digital Output Module(s).

Accutech

A Division of Adaptive Instruments Corp.

577 Main Street

Hudson MA 01749 USA

TEL: 800-879-6576 · 978-568-0500

FAX: (978) 568-9085

Email: support@accutechinstruments.com

Web: www.accutechinstruments.com

© Adaptive Instruments Corp., 2005.

Printed in the USA

Table of Contents

Section 1: Introduction	1
1.1: Using This Manual	1
1.2: About the Device	2
1.3: Unpacking	2
1.4: Software Compatibility	2
Section 2: In a Hurry?	3
Section 3: Installation	4
3.1: Electrical Installation	4
3.1.1: <i>Electrical Specifications</i>	4
3.1.2: <i>Wiring Power and Communications</i>	4
3.1.3: <i>“Daisy-Chaining” Multiple Modules</i>	5
3.1.4: <i>Terminating Analog/Digital Output Modules</i>	6
3.1.5: <i>Wiring Analog Output Loops</i>	7
3.1.6: <i>Wiring Digital Outputs</i>	7
Section 4: Configuring the RS-485 Address	8
Section 5: Configuring the Analog Output Loops	9
5.1: Getting Started	9
5.2: Trimming the 4-20mA Loop Outputs	10
5.3: Mapping Field Units to Analog Outputs	10
Section 6: Configuring the Digital Outputs	12
6.1: Getting Started	12
6.2: Mapping Field Units to Digital Outputs	13
6.2.1: <i>Monitoring Field Unit Process Values</i>	14
6.2.2: <i>Monitoring Field Unit Input Switches</i>	15
6.2.3: <i>Monitoring Field Unit Status</i>	16
6.2.4: <i>Monitoring Base Radio Status</i>	16
Section 7: Technical Specifications	17

Table of Figures

3.1: Overall Wiring Schematic	4
3.2: “Daisy-Chained” Network	5
3.3: Example of How to Wire “Daisy-Chained” Output Modules	5
3.4: Example of End Unit Location.....	6
3.5: Example of How to Properly Terminate an Output Module	6
3.6: Wiring an Analog Output Loop.....	7
3.7: Wiring a Digital Output.....	7
4.1: Output Device Utility	8
5.1: Example of How to Trim Loop Outputs	10
5.2: Example of Data Maps View	10
5.3: Example of Data Map Editor	11
6.1: Base & Output Devices View	13
6.2: Output Device Properties Menu	13
6.3: Monitoring Field Unit Process Values	14
6.4: Monitoring Field Unit Input Switches.....	15
6.5: Monitoring Field Unit Status.....	16

Introduction

1.1: USING THIS MANUAL

This manual is designed to assist in installing, operating, and maintaining Accutech Models WI-4AO, WI-8SW, and WI-4AO-8SW Output Modules. The manual is broken into sections as follows:

Section 2: In a Hurry?

This section summarizes what must be done in order to get the device installed, configured and in operation quickly. However, it does not provide detailed or how-to information to perform the tasks outlined.

Section 3: Installation

This section explains how to correctly wire power, communications, analog output loops and digital outputs. Also covered in this section is how to “daisy-chain” multiple devices together on the same power and communications supplies. Proper communications termination is also covered.

Section 4: Configuring the RS-485 Address

Because each Analog/Digital Output Module must have a unique RS-485 address **before it is used in service**, this section covers how to set this address. Note that a different wiring setup is needed to perform the configuration, thus it is ideal that this be done **prior to placing the device in service**.

Section 5: Configuring the Analog Output Loops

This section only applies if you have the Wireless Instrumentation Manager software and you have purchased the Analog Output Module (WI-4AO) or the Analog/Digital Output Module (WI-4AO-8SW).

This section covers the “mapping” of Field Unit inputs to one of the four analog output loops provided. Ranging and trimming of these loops is also discussed in this section.

Section 6: Configuring the Digital Output

This section only applies if you have the Wireless Instrumentation Manager software and you have purchased the Digital Output Module (WI-8SW) or the Analog/Digital Output Module (WI-4AO-8SW).

This section covers the use of various Field Unit parameters to control the state of the digital outputs. The various modes of digital operation is discussed in this section.

Section 7: Technical Specifications

This section explains the technical specifications that are associated with this device, such as power characteristics, accuracy, and operating characteristics.

1.2: ABOUT THE DEVICE

The Accutech Analog/Digital Output Module is a DIN rail mountable device which allows the user to associate Field Unit outputs, such as process variables, switch input values, and Field Unit status, to 4-20mA loops and/or Digital (Switch) Outputs. There are three versions of this device currently available: Analog (four 4-20mA loops), Digital (eight digital (switch) Outputs), and the Analog/Digital which has four 4-20mA loops as well as eight Digital Outputs.

Each of the Field Units' outputs (e.g. 85°C, 100 PSI or Switch 1 Closed) is received by the Base Radio and is then routed to the Analog/Digital Output Module via an RS-485 connection. This "assigned" variable is then converted to an industry standard 4-20mA signal or digital output (depending on user configuration and type of module purchased) within the Analog/Digital Output Module and output on the respective user defined loop.

The Analog/Digital Output Module allows the user to select which Field Units and their respective variables are mapped to device via the Wireless Instrumentation Manager software.

The purpose of this manual is to help you install and maintain your Accutech Analog/Digital Output Module. The manual is designed to cover three products, but will mainly discuss the Analog/Digital Output Module as it encompasses the use and design of the other two products.

1.3: UNPACKING

Remove the Packing List and check off the actual equipment received. If you have any questions on your shipment, please call your Accutech Representative. Upon receipt of shipment, inspect the container for any signs of damage in transit. Especially take note of any evidence of rough handling. Report any apparent damage immediately to the shipping agent.

Please note that sometimes units are assembled with accessories when shipped. Inspect the shipment carefully if you think that something is missing. This is rare, as we take considerable care to pack units for shipment, but it does sometimes happen. Please give us a call and we may be able to resolve this matter quickly over the phone.

NOTE

Please note that the carrier will not honor any claims for damage unless all shipping materials are saved for their examination. If damage is found during examining and removal of the contents, save the packing material and the carton.

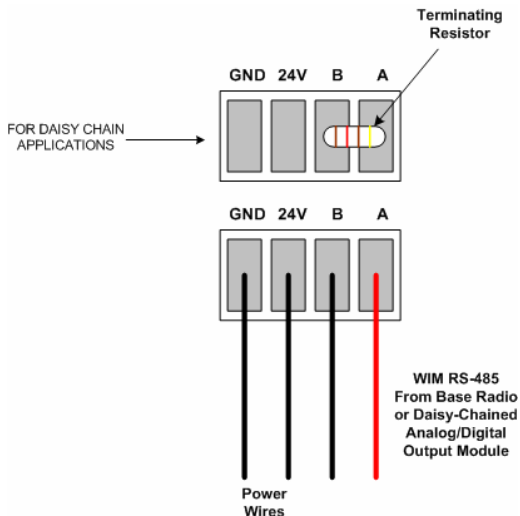
1.4: SOFTWARE COMPATABILITY

Software for Accutech is revised periodically. Internal device software may contain portions that are not compatible with previous versions of the Wireless Instrumentation Manager software.

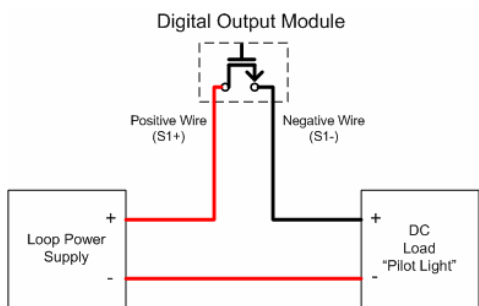
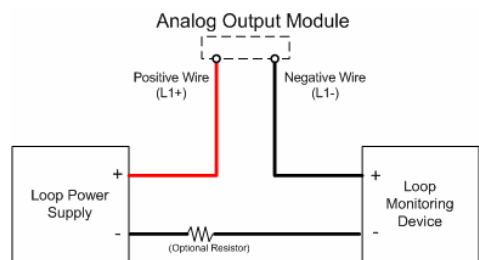
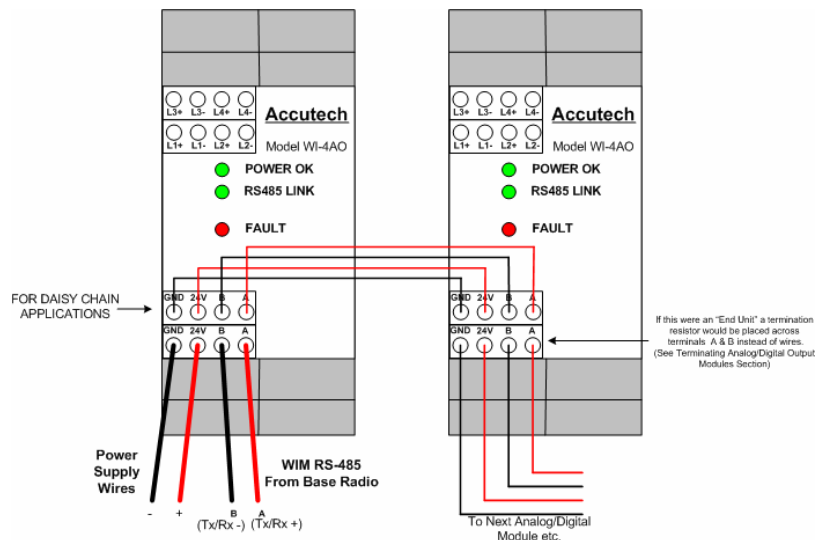
To ensure software compatibility, Wireless Instrumentation Manager software version 1.56.126 or later must be used. If you believe you are experiencing software compatibility issues please call Accutech Technical Support at (978) 568-0500 or email wireless@adaptiveinstruments.com.

In a Hurry?

This section summarizes what must be done in order to get the device installed, configured and in operation quickly. However, it does not provide detailed or how-to information to perform the tasks outlined.



1. Wire 24VDC power to the Output Module (See side Diagram)
2. Wire WIM RS-485 communications to the Module (See side Diagram)
3. Place terminating resistor in terminal only if Module will be used as an End Unit (see side Diagram)
4. With only one Analog/Digital Output Module on the RS-485 network at a time, configure the RS-485 Address of each Analog/Digital Module via the Output Device Utility. (Only assign addresses between 3 and 32).
5. Once each Module has been given a unique address, re-wire the Modules in a daisy-chain with the Base Radio, making sure that the device with the terminating resistor (could be Base Radio) is in the End Unit location. (See Diagram below for daisy-chain wiring diagram).



6. Wire Analog Loops (L1...L4) if purchased (See side Diagram)
7. Wire Digital Outputs (S1...S8) if purchased (See side Diagram)
8. Using Wireless Instrumentation Manager software trim all Analog Output Loops (if purchased) via the **Trim Wizard** on each Output Module
9. Using Wireless Instrumentation Manager software map desired Field Unit Process Values to respective Analog Output Loops via the **Data Maps** view.
10. Using Wireless Instrumentation Manager software configure Digital Output to monitor various Field Unit and Network parameters via the **Properties** of each Output Module

Installation

3.1: ELECTRICAL INSTALLATION

In this section wiring instructions are discussed for the various setup capabilities of the Analog/Digital Output Module. The subsections are as follows:

- 3.1.1: *Electrical Specifications*
- 3.1.2: *Wiring Power and Communications*
- 3.1.3: *“Daisy-Chaining” Multiple Modules*
- 3.1.4: *Terminating Analog/Digital Output Modules*
- 3.1.5: *Wiring Analog Output Loops*
- 3.1.6: *Wiring Digital Outputs*

3.1.1: Electrical Specifications

- 24VDC Power Supply with 0.5 Amp minimum output
Recommend 22AWG Power Supply wire
- 2 Wire RS-485 Serial Communications Cable
Recommend Belden 3105A shielded and protected 22AWG or equivalent
- All output loops **MUST** be externally powered

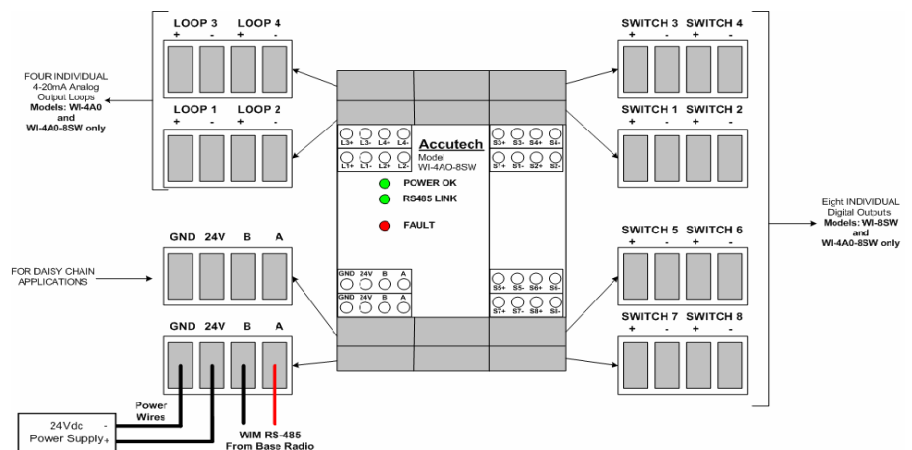
3.1.2: Wiring Power and Communications

Once you have located power and communications terminal blocks shown in Figure 3.1, you can wire the Analog/Digital Output Module accordingly. The best way to wire the Module is to:

1. Remove the terminal blocks from the jacks on the Output Module.
2. Secure the wire into the proper terminal blocks via the small standard screws located on the top of the terminal blocks.
3. Plug the terminal blocks back into the proper jacks on the Output Module.

⚠ **Warning** ⚠

Remember to turn off all power **BEFORE** hooking up any wires!



⚠ **Caution** ⚠

The 4-20mA Loop (on the Analog or Analog/Digital Device only), labeled L1, L2, L3, and L4, are **NOT** for a power supply; **however they must be externally powered**. These connections are only used for analog 4-20mA loop outputs. Placing incorrect power supply to these connections can damage the Analog/Digital Output Module.

Figure 3.1: Overall Wiring Schematic

3.1.3: “Daisy-Chaining” Multiple Output Modules

In order to allow the Base Radio to communicate to an Output Module the user **MUST** daisy chain the Base Radio to the Analog/Digital Output Module.

To do so, bring the RS-485 wires from the Base Radio to the Output Module terminal block labeled “RS485 from Base Radio” shown in the Figure 3.1: Overall Wiring Schematic. Then simply attach the outbound RS-485 cable (if needed for a PC or another Analog/Digital Output Module) to the terminal labeled “For Daisy Chain Applications”.

Caution

Make sure only **ONE power supply** is routed to an Output Module at any time! (Does not apply to Loop Power Supplies)

Power may be supplied in daisy-chain form from a single power supply, but be sure not to power a Module from two separate supplies. Doing so will supply the Analog/Digital Output Module with 48VDC and destroy the unit! The two GND and 24V connectors on the Module are connected internally.

Shown in Figure 3.2, is a common daisy-chain network using three optional Accutech Analog/Digital Output Modules. In this setup the output from one Analog/Digital Output Module is the input to the next Analog/Digital Output Module.

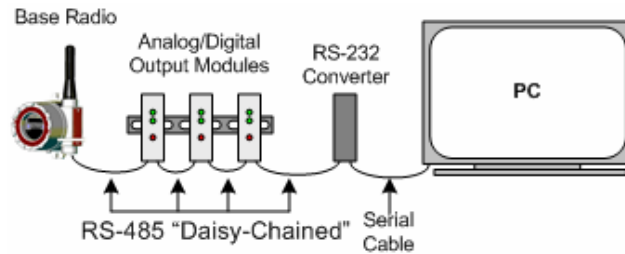


Figure 3.2: “Daisy-Chained” Network

Shown below in Figure 3.3, is an example of how to wire the Modules together when using a daisy-chain setup with multiple Analog/Digital Output Modules.

NOTE

The RS-485 communication setup is half duplex. If one of the Output Modules in the daisy-chain application is wired to an RS-485 to RS-232 converter, the A (Tx +) and B (Tx-) wires may need to be crossed for correct operation. Please see the converter’s user manual for further instructions.

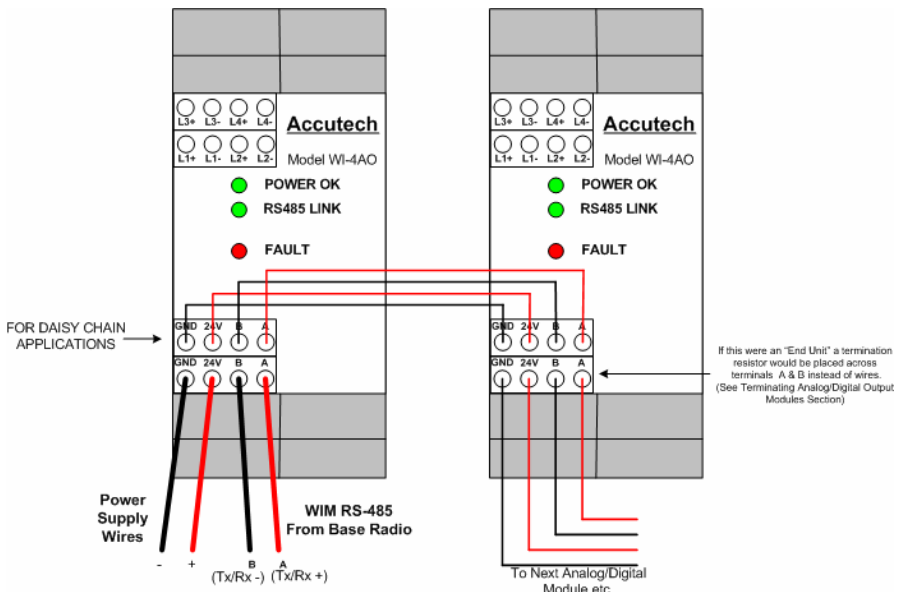


Figure 3.3: Example of How to Wire “Daisy-Chained” Output Modules

3.1.4: Terminating Analog/Digital Output Modules

RS-485 is capable of maintaining communications over a maximum distance of approximately 3000 to 4000 feet. In most (and we recommend all) situations the unit that comprises an “end” of an RS-485 network should be terminated by a resistor wired across the A and B wires.

In the case of a daisy-chained application the end unit should be terminated. The end unit is the unit that is at the end of series of units. Note: a PC is also an end unit, but the termination for this end unit is done within the converter. In a multiple unit daisy-chain application the end unit is the RS-485 unit located farthest from the PC, as shown in Figure 3.4 below:

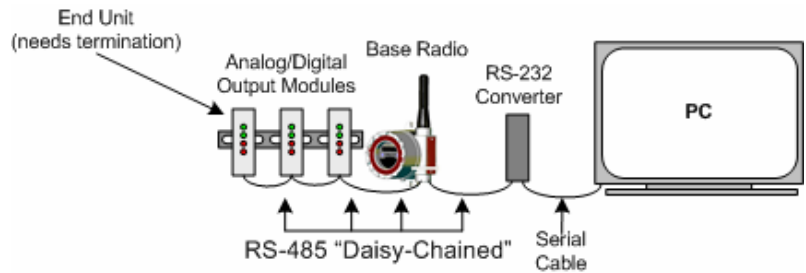


Figure 3.4: Example of End Unit Location

Termination of an end unit is done by placing a resistor across the A and B wires of the RS-485 cable. The value of this resistor should match the characteristic impedance (Z_0) of the RS-485 cable. The characteristic impedance (Z_0) is published by the manufacturer of the RS-485 cable you are using.

If you are using the Belden 3105A RS-485 wire recommended under the Wiring RS-485 to the Base Radio section (of the Base Radio User’s Guide) the value of the resistor should be a 120 ohm ¼ watt resistor.

To terminate an Output Module simply place one end of the resistor in the open terminal block’s B slot and place the other end of the resistor in the open terminal block’s A slot. Doing so will place the resistor across the A and B wires as needed. An example of this is shown below in Figure 3.5.

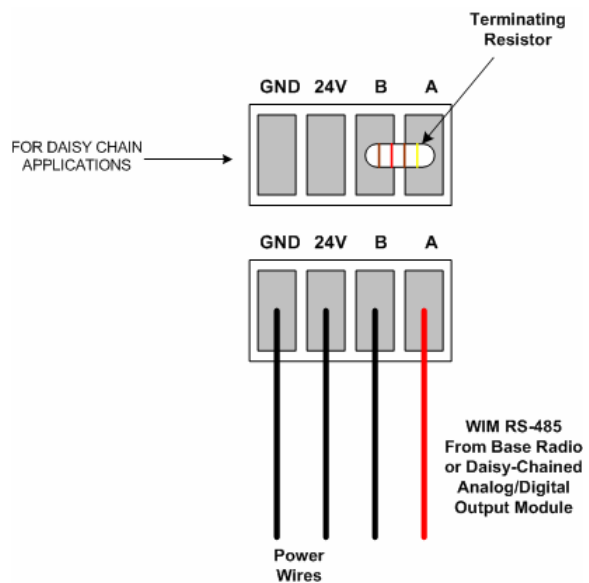


Figure 3.5: Example of How to Properly Terminate an Output Module

3.1.5: Wiring Analog Output Loops

Note that this section only applies if you have purchased an Analog Output Module (WI-4AO) or the combination Analog/Digital Output Module (WI-4AO-8SW).

Because the Analog Module does not supply the loop power for each of its four output loops (L1...L4); this must be supplied by an external power supply and an optional current limiting resistor in series with the monitoring device as shown in the figure below:

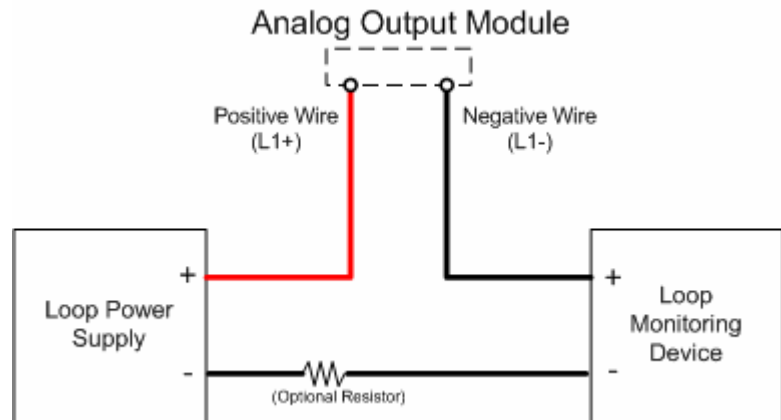


Figure 3.6: Wiring an Analog Output Loop

3.1.6: Wiring Digital Outputs

Note that this section only applies if you have purchased the Digital Output Module (WI-8SW) or the combination Analog/Digital Output Module (WI-4AO-8SW).

Because the Digital Module is simply a Normally Open switch type operation, some excitation may need to be supplied to the digital circuit in order to determine the state of the digital circuit, as shown in Figure 3.7 below. The amount of power supplied to the loop is determined by the requirements of the device that is monitoring the state of the digital circuit. The power supply limits of the digital circuit are 30VDC and 1A each. Each digital circuit is individually isolated.

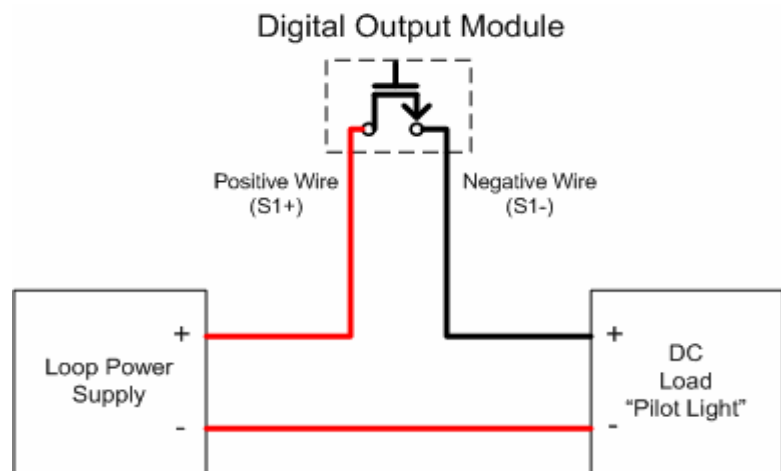


Figure 3.7: Wiring a Digital Output Circuit

NOTE

The de-energized state of all digital switches is NORMALLY OPEN. Consideration should be given, as in the event of power loss to the device, all switches will OPEN.

Configuring the RS-485 Address

NOTE

All Analog/Digital Output Modules are given an RS-485 Address of 3 at the factory. Thus, if you have purchased more than one module, re-addressing must be performed. Failure to do so will prevent Wireless Instrumentation Manager from properly communicating with these devices.

Each Analog/Digital Output Module has an RS-485 address. These addresses must be set before the Analog/Digital Output Modules can be used in service.

To set the RS-485 address for the Analog/Digital Output Module, follow the instructions below. The factory default for all Modules is Address 3:

1. Make sure Wireless Instrumentation Manager Software is installed on the PC.
2. Wire and Connect an **individual** Analog/Digital Output Module to the PC via the RS-232 converter.
3. Run the Output Device Utility, which is found in Windows XP Professional by navigating to the following on the PC:

Start→
 Programs→
 Accutech Wireless Manager→
 Output Device Utility

You should see the following screen after performing these steps:

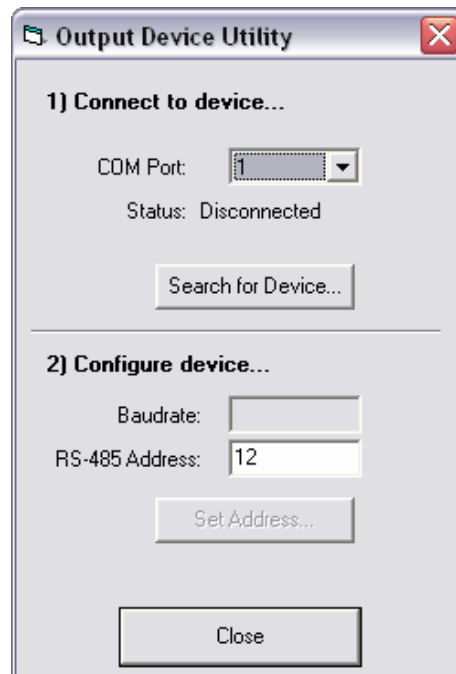


Figure 4.1: Output Device Utility

1. Select the COM Port that the Module is connected (Usually COM 1)
2. Then click Search for Device
3. Once the device is found, its current Baud Rate and RS-485 Address will be displayed. Enter a new address from 3 to 32. (NOTE: Analog/Digital Output Modules CANNOT share the same address if they reside on the same daisy-chain network)
4. Then click Set Address
5. Repeat all steps for subsequent devices. Note that all devices come factory configured to Address 3, and will conflict unless all are changed to different addresses.

Configuring the Analog Output Loops

In this section software configuration instructions are discussed for the various setup capabilities of the Analog Output Module. The subsections are as follows:

- 5.1: Getting Started
- 5.2: Trimming the 4-20mA Loop Outputs
- 5.3: Mapping Field Units to Analog Outputs

This section only applies if you have the Wireless Instrumentation Manager software and you have purchased the Analog Output Module (WI-4AO) or the Analog/Digital Output Module (WI-4AO-8SW).

There are four possible 4-20mA output loops available on each Analog/Digital Output Module. Each individual loop is configurable to a Field Unit RF ID number.

NOTE

All loops must be externally powered as the Analog/Digital Output Module does not supply the loop power. See section 3.1.5 for more wiring details.

For example: If Loop 1 on the Analog/Digital Output Module has been mapped to RF ID #1 and Input #1, then the Field Unit that has been set to RF ID #1 will have its process variable from Input #1 output on that 4-20mA loop.

The Module also has three indication lights:

- **POWER OK** – Indicates power is being supplied
- **RS485 LINK** – Flashes every time the Output Module receives an RS485 message from the Base Radio.
- **FAULT** – Indicates loss of communication or sensor error with one of the four mapped inputs when lit.

5.1: GETTING STARTED

Once you have properly wired up the Base Radio and the Analog/Digital Output Module(s), turn on the Field Units, Base Radio and Output Module. Make sure that the Field Unit(s) and Base Radio are communicating properly (see respective User Guides for more details). Then run the Wireless Instrumentation Manager (WIM) software.

Once you are connected to the WIM software, click on the **Base & Output Devices** icon in the left hand **VIEWS** pane. The top half of the view will contain all the Base Radios on your network. The bottom half of the view will contain all the Analog/Digital Output Modules that are on the network.

If you have connected the Analog/Digital Module but do not see it being displayed, you may have to tell the software to look for new devices. The software performs a new device search upon start-up of the RF Server, however if devices are added after the RF Server is already running, they may not be detected. To manually perform a new device search click **Discover Devices**, which is found under the **File** menu. The software will inform the user when it is finished searching for devices via the Events Log.

5.2: TRIMMING THE 4-20mA LOOP OUTPUTS

In order to make the 4-20mA loop read accurately, you may need to trim it to match the device that is reading it. To trim one of the four analog loops on the device, go to the **Base & Device Outputs** view in the WIM software. Right-click on the Output Module you wish to trim. Then select the **Trim Wizard** selection from the menu. Doing this will bring up the trim wizard as shown in Figure 9:

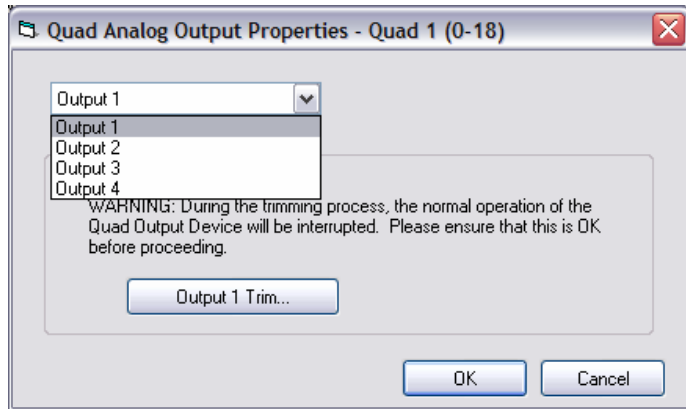


Figure 5.1: Example of How to Trim Loop Outputs

As shown above, select the output loop you wish to trim from the drop down box. These outputs correspond to loops L1+, L1-, L2+, L2-... and so on.

Once you have selected the output you wish to trim, click the **Output Trim** button. This will take you through a set of steps that will trim that particular output of the unit. Please note that you must have a way to read the output of the unit as this is required when performing the trim functions.

5.3: MAPPING FIELD UNITS TO ANALOG OUTPUTS

Any Field Unit’s input may be mapped or “linked” to an available output loop on the Analog Output Module. This is done in the **Data Maps** view within the WIM software as shown in Figure 5.2:

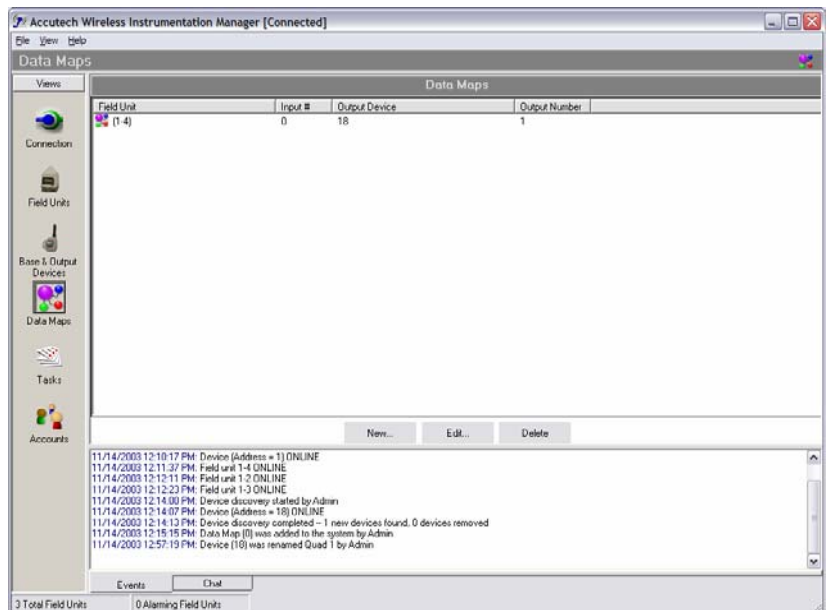


Figure 5.2: Example of Data Maps View

NOTE

Field Units are often referenced throughout the software by two numbers, such as 1-4 in Figure 5.2. The first number refers to the Base Radio ID and the second number refers to the Field Unit RF ID.

5.3 Continued

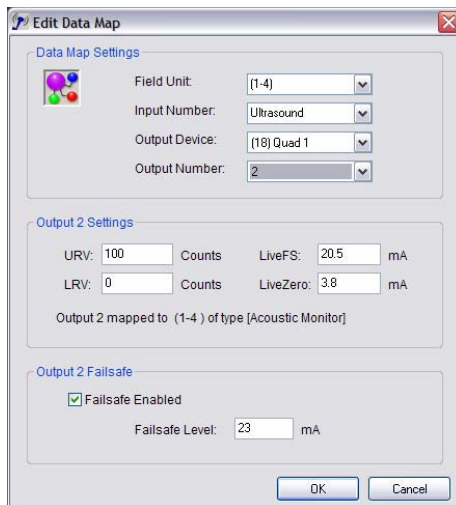


Figure 5.3: Example of Data Map Editor

NOTE

When an Analog/Digital device is configured the configuration data is downloaded into the unit via the RS-485 connection. This means that the software and PC can be completely separated from the device and it will continue to operate in the way it was last configured.

If the Wireless Instrumentation Manager software is being run in Configuration Mode, the software will ask the Analog/Digital Output Module how it is currently configured and display this to the user.

If the Wireless Instrumentation Manager software is being run in Management Mode, the software will store the Analog/Digital Output Module configuration data and display this stored data to the user.

To map a Field Unit input to a particular output loop click on the **NEW** button. This will bring up the Data Map Editor as shown in Figure 5.3.

First, select the desired Field Unit to be mapped in the Field Unit drop box. The first number corresponds to the Base Radio ID. The second number corresponds to the Field Unit ID on that Base Radio.

Once the Field Unit is selected, select the Input Number. This refers to the available inputs on the selected Field Unit. Please note that a Field Unit may only have one input.

Next, select the Output Module that should output the Field Unit value. The number in parenthesis is the address of the Output Module. This number corresponds to the RS-485 Address values set via the Output Device Utility (see the Setting the Analog/Digital Output RS-485 Address section for more details).

After selecting the specific Output Module, select the loop or **Output Number**. This number refers to the four available loops on the Output Module. Number 1 corresponds to L1+ and L1- on the Output Module and so on.

In the **Output Settings** box, set the upper and lower output values (in Input Unit Values), and then select corresponding mA loop output values. Note that this is a linear output from the lower range value (LRV, which is 4mA) to the upper range value (URV, which is 20mA). In the example in Figure 11, we have selected the ultrasound input of Field Unit ID 4 and mapped it to Output Loop 2. We then selected that 100 Counts would be the URV and this would cause an output of 20mA on the output loop, and we selected that 0 Counts would cause an output of 4mA on the output loop. This would mean that if the Field Unit were reading 50 Counts of ultrasound the output would be 12 mA (or half way between 4 and 20mA).

The Live Full Scale and Live Zero settings indicate the max./min. mA level that the device will output. (Not including the Failsafe). For example, in Figure 5.3 we have set LiveFS to 20.5mA which means that if the ultrasound level passed 100 Counts (the URV) the device would continue to output until it read 103.25 Counts, which corresponds to 20.5mA. If the value goes beyond 103.25 Counts the device would continue to only output 20.5mA.

There is also an option of enabling or disabling a failsafe output for the analog loop. When the check box, located in the **Output Failsafe** box, is checked, the failsafe output is enabled. This means that if a failsafe condition occurs, the output loop will no longer output the Field Unit value, but instead output the mA source specified in the **Failsafe Level** box. Reasons for a failsafe condition are:

- Loss of RF communication between the Base Radio and Field Unit.
- Loss of RS-485 communication between the Base Radio and Output Module.
- Field Unit Sensor Failure or System Failure.
- Field Unit mapped input is disabled by user.

To finish and save all the selected settings simply click the **OK** button. Once you have done so, a mapped property line is added to the Data Maps view. This is shown in Figure 10 in the top center pane.

Configuring the Digital Outputs

In this section software configuration instructions are discussed for the various setup capabilities of the Digital Output Module. The subsections are as follows:

- 6.1: Getting Started
- 6.2: Mapping Field Units to Digital Outputs
 - 6.2.1: *Monitoring Field Unit Process Values*
 - 6.2.2: *Monitoring Field Unit Input Switches*
 - 6.2.3: *Monitoring Field Unit Status*
 - 6.2.4: *Monitoring Fault Conditions*

NOTE

All loops must be externally powered as the Analog/Digital Output Module does not supply the loop power. See section 3.1.6 for more wiring details.

This section only applies if you have the Wireless Instrumentation Manager software and you have purchased the Digital Output Module (WI-8SW) or the Analog/Digital Output Module (WI-4AO-8SW).

There are eight possible digital outputs available on each Analog/Digital Output Module. Each individual loop is configured to a Field Unit RF ID number and variable within that Field Unit.

For example: If Switch 1 on the Analog/Digital Output Module has been selected to monitor Field Unit Status, then the Field Unit(s) that have been selected to be monitored will have their user selected status variables collectively output as specified on that switch.

The Module also has three indication lights:

- **POWER OK** – Indicates power is being supplied
- **RS485 LINK** – Flashes every time the Output Module receives an RS485 message from the Base Radio.
- **FAULT** – Indicates loss of communication or sensor error with one of the eight mapped inputs when lit.

6.1: GETTING STARTED

Once you have properly wired up the Base Radio and the Analog/Digital Output Module(s), turn on the Field Units, Base Radio and Output Module. Make sure that the Field Unit(s) and Base Radio are communicating properly (see respective User Guides for more details). Then run the Wireless Instrumentation Manager (WIM) software.

Once you are connected to the WIM software, click on the **Base & Output Devices** icon in the left hand **VIEWS** pane. The top half of the view will contain all the Base Radios on your network. The bottom half of the view will contain all the Analog/Digital Output Modules that are on the network.

If you have connected the Analog/Digital Module but do not see it being displayed, you may have to tell the software to look for new devices. The software performs a new device search upon start-up of the RF Server, however if devices are added after the RF Server is already running, they may not be detected. To manually perform a new device search click **Discover Devices**, which is found under the **File** menu. The software will inform the user when it is finished searching for devices via the Events Log.

6.2: MAPPING FIELD UNITS TO DIGITAL OUTPUTS

Any combination of Field Units and their respective inputs and outputs may be mapped or “linked” to the various digital outputs on the Digital Output Module. This is done in the **Base & Output Devices** view within the WIM software as shown in Figure 6.1.

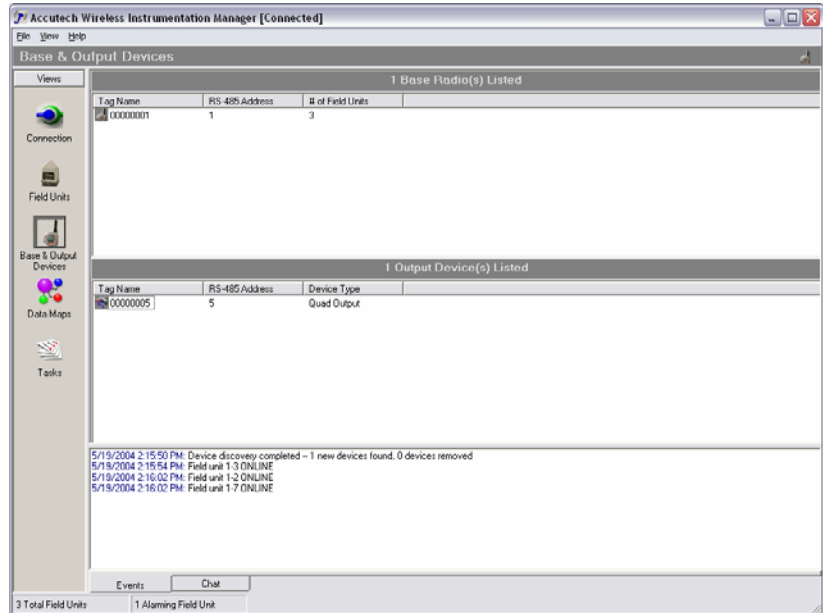


Figure 6.1: Base & Output Devices View

NOTE

The de-energized state of all digital loops is **NORMALLY OPEN**. Consideration should be given, as in the event of power loss to the device, all switches will OPEN.

To map the Field Unit(s), double-click on the appropriate Analog/Digital Output Module or right-click and select **Properties**. Doing so will open the Output Device Properties menu as shown in Figure 6.2.

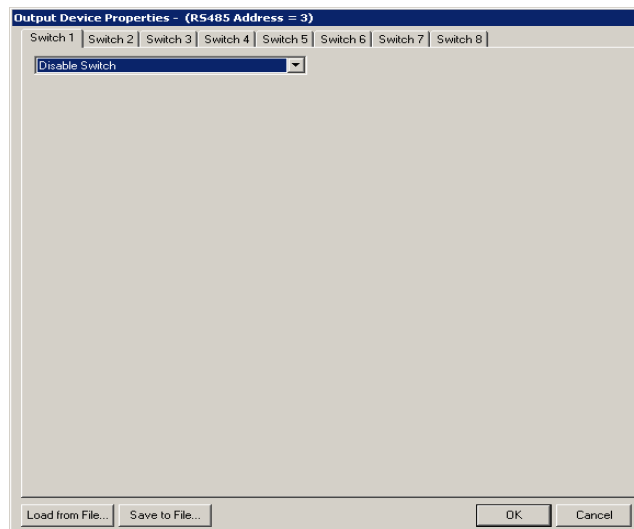


Figure 6.2: Output Device Properties Menu

As seen in Figure 6.2, above, the switches all come in the disabled position from the factory. The disabled position is the normally open position. Because these switches are normally open, the device will revert to open position on all switches if a power loss occurs.

To enable a switch, select the intended mode for the switch in the respective drop box menu. Each of the switch modes available are outlined in the following section along with configuration instructions.

6.2.1: Monitoring Field Unit Process Values

The 'Monitor Field Unit Process Value' mode is used to open and close the switch output based on the value of the Field Unit's process variable. As shown in Figure 6.3, once the mode has been selected in the drop down box, the following menu will appear:

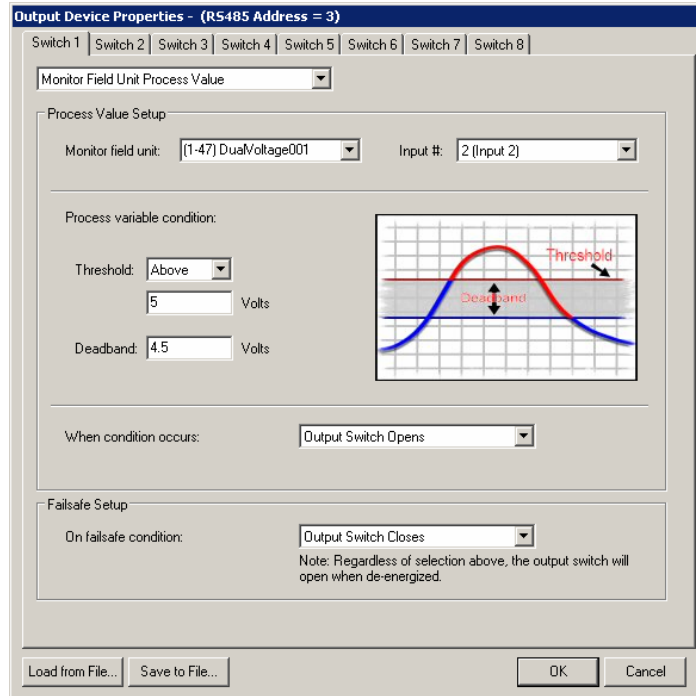


Figure 6.3: Monitoring Field Unit Process Value

About the Failsafe Setup

Once a switch has been enabled to operate in a certain mode, a **Failsafe Setup** box will be displayed on the bottom of Output Device Properties screen, as shown in Figure 6.3.

The failsafe condition setting indicates which state the switch will be set to, in the event of a failsafe condition such as loss of communications with the Base Radio. However, if the Output Device loses power the switch will be in an OPEN state.

In the above example Switch 1 (S1+, S1-) is being setup to monitor the process variable of the Field Unit with RF ID 47 and a Tag Name of Dual-Voltage001. The Field Unit's number two, or secondary process variable has been set to be monitored via the **Input #** drop box. Since the unit being monitored is a Multi-Input Field Unit, the **Threshold** and **Deadband** values are in whichever units the device has been configured to; in this case volts.

The **Threshold** setting is the set point that if exceeded, the state of the switch will change to state selected in the **When condition occurs** drop box; in this case the switch has been set to open when the threshold is exceeded.

The **Deadband** setting is an additional margin about the threshold at which the switch will be allowed revert to its original state. The value entered in the **Deadband** box is the width of this deadband, and NOT a set point. For example, with the above settings Switch number one would open when the [second] input variable of Field Unit RF ID 47 is above 5 Volts. Say this open switch turns on a discharging device of some sort and the voltage begins to fall from the 5 Volts it reached to 4 Volts. The switch will remain in the open state, and the discharging device will remain on, even though the measured temperature has fallen below the threshold. This is due to the deadband that was set. In this case the switch will not close and turn off the discharging device until the voltage reaches 0.5 Volts. Once the voltage falls below 0.5 Volts, it must climb back above the 5 Volt threshold to open the switch again.

6.2.2: Monitoring Field Unit Input Switches

The ‘Monitor Field Unit Input Switches’ mode is used to open and close the switch output based on the current state of the switch input being monitored by a Field Unit(s). As shown in Figure 6.4 once the Monitoring of a Field Unit’s Input Switches mode has been selected in the drop down box, the following menu will appear:

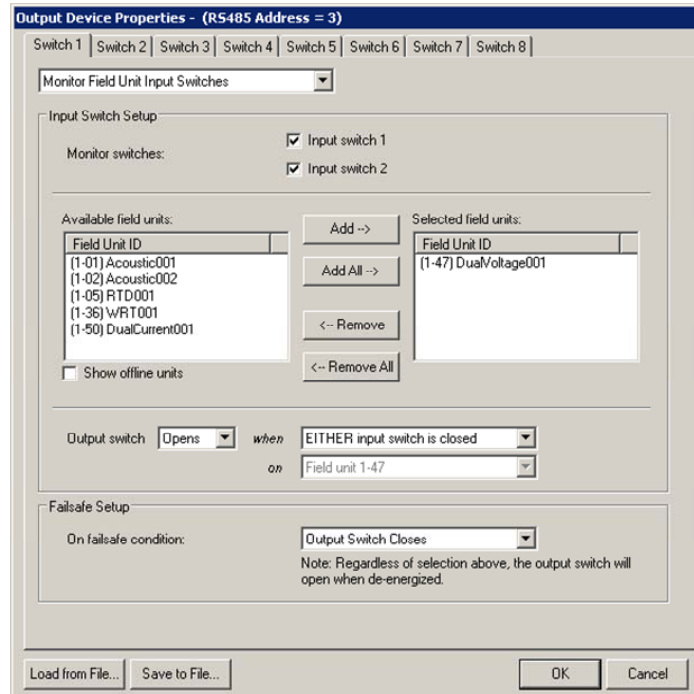


Figure 6.4: Monitoring Field Unit Input Switches

In the above example Switch 1 (S1+, S1-) is being set up to monitor the switch inputs of the Field Unit with RF IDs 47 and Tag Name DualVoltage001. The Field Unit’s **Input Switch 1** and **Input Switch 2** have been set to be monitored via the respective check boxes. Note that in the list of **Available Field Units** only online Field Units are displayed. If it is desired to have all possible Field Units displayed, check the **Show offline units** box.

Since we have chosen to monitor both input switches of the two Field Units, we are allowed to enter two rules which will determine the state of the output switch (Switch 1 on the Digital Output Module in this case). The first rule pertains to the two input switches on EACH Field Unit. The rule is asking whether the output switch (on the Digital Output Module) should open/close (depending on the user setting) when EITHER input switch closes on a Field Unit or if the output switch should open/close only when BOTH input switches on a Field Unit close.

The second rule pertains to Field Unit(s) that are listed in the **Selected Field Units** box. The rule is asking if the output switch should open/close when ANY Field Unit meets the first rule or if the output switch should open/close only if ALL Field Units meet the first rule. (In Figure 6.4 we are only monitoring one Field Unit so that is the only available rule).

If we had chosen only to monitor Input Switch 1 OR Input Switch 2 and not both, the first rule would have been unavailable. This means that only the second rule would apply to respective monitored input switch.

About the Failsafe Setup

Once a switch has been enabled to operate in a certain mode, a **Failsafe Setup** box will be displayed on the bottom of Output Device Properties screen, as shown in Figure 6.3.

The failsafe condition setting indicates which state the switch will be set to, in the event of a failsafe condition such as loss of communications with the Base Radio. However, if the Output Device loses power the switch will be in an OPEN state.

6.2.3: Monitoring Field Unit Status

The monitoring of a Field Unit’s status mode is used to open and close the switch output based on the current status of a Field Unit(s). As shown in Figure 6.5, once this mode has been selected in the drop down box, the following menu will appear:

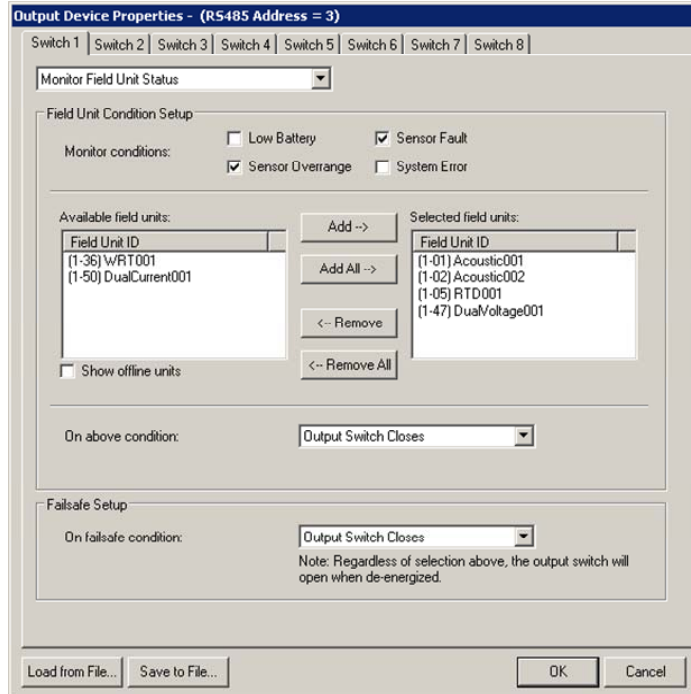


Figure 6.5: Monitoring Field Unit Status

About the Failsafe Setup

Once a switch has been enabled to operate in a certain mode, a **Failsafe Setup** box will be displayed on the bottom of Output Device Properties screen, as shown in Figure 6.3.

The failsafe condition setting indicates which state the switch will be set to, in the event of a failsafe condition such as loss of communications with the Base Radio. However, if the Output Device loses power the switch will be in an OPEN state.

In the above example Switch 1 (S1+, S1-) is being set up to monitor the status of the Field Units’ with RF IDs 1, 2, 5 and 47. The Field Units’ **Low Battery** and **Sensor Fault** have been set to be monitored via the respective check boxes.

If for any reason one of the selected conditions become true for ANY of the Field Units that are listed in the **Selected Field Units** box, the output switch will open/close. The user must determine whether the output switch should open or close based on the previous parameters. This is selected via the **On above condition** drop box.

6.2.4: Monitoring Base Radio Status

The monitoring Base Radio status mode is used to open and close the switch output based on the detection of a fault condition with the Base Radio communications.

In this mode, the switch will open/close if for any reason the Base Radio stops communicating on the RS-485 network to the Digital Output Module. The user must determine whether the output switch should open or close based on the previous parameter. This is selected via the drop box.

Technical Specifications

Operating Characteristics

- 10-30 VDC
- -40 °F to 185 °F (-40 °C to 85 °C)
- Switch closure outputs are individually isolated and rated for up to 30 VDC and 1 Amp.

Analog Output Characteristics

- 4-20mA outputs require 12-32 VDC loop power
- 4-20 mA is Opto-isolated
- Isolation voltage = 800 V
- 4 uA resolution

Digital Output Characteristics

- Switch closure outputs are individually isolated and rated for up to 30 VDC and 1 Amp.

Accuracy

- Accuracy of 10 μ A at 25°C (reference conditions)
- Ambient Temperature effect \pm 0.1% of reading per 18°F (10°C)
- Supply rejection less than 2 μ A from 12-32 V

Physical Characteristics

- DIN Rail mounted
- 3.8" high X 1.8" wide X 4.4" deep (Analog Output Module WI-4AO)
- 3.8" high X 2.7" wide X 4.4" deep (Digital Output Module WI-8SW)
- 3.8" high X 2.7" wide X 4.4" deep (Analog/Digital Output Module WI-4AO-8SW)

Fault (Fail-Safe) Condition

- Each output goes into fail safe in the event of a sensor failure, missing sensor, NO RF condition, RS-485 link down, field unit powered down
- The Analog/Digital Output Module displays a fault indication if any enabled output goes into a fail-safe condition

User Programmable Options

- Range (lower value range and upper value range) each output using Wireless Instrumentation Manager (WIM)
- Trim each output using WIM
- Enable or disable failsafe for each output
- Failsafe output user selectable to 3.6mA, 23mA, or user specified value
- Select RS-485 address with the Configuration Utility Program

A B O U T U S

Accutech, a division of Adaptive Instruments Corp., is a leading edge, technology-driven developer, manufacturer and supplier of embedded microprocessor-based electronics. Based in Hudson, Massachusetts, Accutech is the most successful leading independent producer of wireless instrumentation on the market today.

Accutech customers include large national companies in the oil and gas, chemicals, pharmaceutical, food and beverage, primary materials processing, and energy industries. In addition to the wireless product line, Accutech also offers a traditional wired line of temperature, pressure and differential pressure instrumentation.

In the process control field, where quality is taken for granted and new technology is announced daily, we have deliberately concentrated our efforts on the development of instrumentation that makes business sense. The result is a product range that is rugged, secure, and reliable and works in even the most hazardous environments. We give companies the tools to reduce costs, save time, enhance safety, improve environmental performance and cut waste.

The next industrial revolution is right now. Let Accutech show you how to realize gains in operating efficiency.

Visit us at: www.accutechinstruments.com

Or call us at +1 800 879-6576

Specifications subject to change without notice. Printed in USA. Copyright 2005 Adaptive Instruments, Corp.

The logo for Accutech, featuring the word "Accutech" in a bold, white, sans-serif font set against a solid orange rectangular background.

A Division of Adaptive Instruments Corp.
577 Main Street · Hudson, MA 01749 U.S.A.
TEL: 800-879-6576 · 978-568-0500
FAX: 978-568-9085
Email: support@accutechinstruments.com
www.accutechinstruments.com

The logo for Wireless Instrumentation, featuring a stylized orange and white graphic of concentric arcs above the text "Wireless Instrumentation" in a bold, sans-serif font. Below this, the tagline "FOR INDUSTRIAL SENSORS" is written in a smaller, all-caps, sans-serif font.

**Wireless
Instrumentation**
FOR INDUSTRIAL SENSORS